



Thank you

for downloading this pdf file from [Knitting-and.com](https://www.knitting-and.com)!

Your visits have helped keep Knitting-and.com online, providing free crafts and recipes since 1996.

There are hundreds of free patterns and crafts available and more added all the time!

Note: The pink watermark on the following pages will not show if you print this file.

<https://www.knitting-and.com>

... *And so to*

SEW

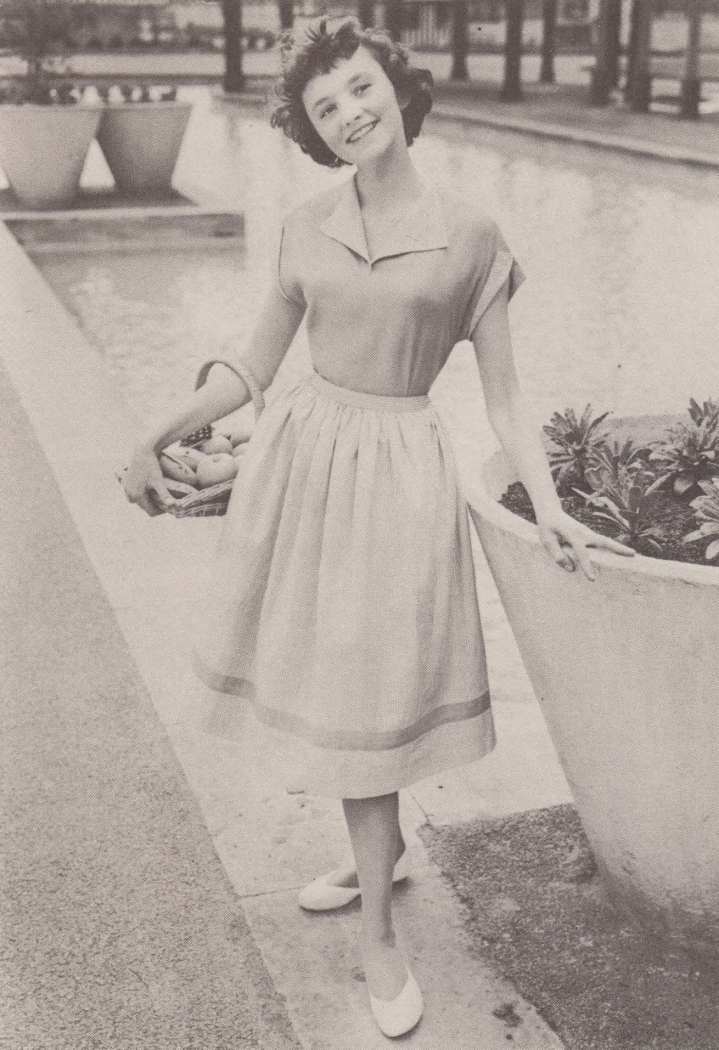


NDS BULLETIN 26A · THREE SKIRTS FOR SEPARATES



<https://www.knitting-and.com>





Separates f

Every girl who is interested in planning and making her own clothes, knows how important it is to include separates in her wardrobe. This fashion of separates has developed rapidly since we included suggestions in Bulletins No. 17A and No. 21A. Separates include blouses, waistcoats, skirts and jackets which may be combined in different ways. In this bulletin we show three cotton skirts which have been designed to accompany the blouses of Bulletin No. 25A, but it is easy to see how all these garments are interchangeable, depending on the choice of colour and fabric.



For these skirts three styles have been selected, pleated, gathered and gored. The pleated and gathered skirts are similar in construction but the pleated skirt has a back opening with zip fastener and the gathered skirt has a side opening with press studs. Details of the construction of these two types of openings and also of the making of pleats and gathers are given. The gored skirt is made from a pattern which is included with the working instructions. As the skirts are simple in style and construction, they can be easily adapted to a wide range of sizes.

If desired the gathered and pleated skirts may be made in poplin or taffeta for parties and the gored skirt in a wool fabric for winter or school days.

<https://www.knitting-and.com>

Bulletin No. 27a will contain further ideas for the use

or Summer

Skirts to match

the blouses of

Bulletin 25A



PLEATED SKIRT

Size: Waist, 25 in.; length, 29 in.

Materials: 3 yd. cotton, 36 in. wide; one piece vilene, 2½ in. by 28 in.; one lightweight self-locking zip fastener to match, 8 in. long; one press stud; two hooks and eyes; one reel mercerised sewing cotton No. 40 to match; one Sharps needle No. 7; one machine needle No. 14.

Cutting Directions: *Skirt.* Cut one piece 103½ in. by 32½ in. *Waistband.* Cut one piece 4½ in. by 28 in.

Sewing Directions: ¼ in. has been allowed for the seams and 2 in. for the hem.

(1) Mark the centre front of skirt with a line of basting, after folding the fabric in half widthwise. Measure and mark 1½ in. on each side of the centre front. Starting at these points pleat the skirt, with the pleats facing towards the back, making eleven knife pleats on each side of the centre front, 1 in. apart, and approximately 1¾ in. deep. Baste in position at waist. (2) Baste and stitch centre back seam, right sides together, raw edges even, leaving an opening of 8¾ in. at the top for the zip fastener. Press the seam open and finish the raw edges with machine stitching. (3) Insert the zip fastener in the opening, using the semi-concealed method of application. (4) Fold the waistband in half lengthwise, right sides together, raw edges even. Baste vilene to one side, edges even. Baste and stitch one short end. Baste and stitch remaining end to a 1 in. deep point and continue stitching along the long straight edges for ½ in. Trim vilene close to the stitching and trim seams. Clip the seam allowance at the end of stitching on overlap. Turn to the right side, baste pointed end and press. (5) Place one raw edge of the waistband to the right side of the skirt, raw edges even and with the overlap extending 1½ in. beyond the right hand edge of the opening. Baste and stitch along the fitting line. Trim seam as before. Turn in the remaining long raw edge of the waistband and slipstitch in position just above the machine stitching. (6) Sew the eyes on the wrong side at the edge of the underlap and the hooks on the wrong side of the overlap to correspond. (7) Sew the press stud in position, to secure the overlap. (8) Turn up the hem to the desired length. Turn in the raw edge; baste and slipstitch in position.

GATHERED SKIRT

Size: Waist, 24 in.; length, 25½ in.

Materials: 1½ yd. striped cotton, 36 in. wide; ½ yd. plain cotton, 36 in. wide; one piece vilene, 1½ in. by 27½ in.; one piece tape 7¾ in. by ½ in.; five press studs; two hooks and eyes; one reel mercerised sewing cotton No. 40 to match; one Sharps needle No. 7; one machine needle No. 14.

Cutting Directions: *Skirt.* Cut two pieces 29 in. by 33 in. in striped cotton (with the selvedge edge 29 in.). *Waistband.* Cut one piece 3 in. by 27½ in. in striped cotton, with stripes lengthwise. *Contrasting Band.* Cut two pieces 2¼ in. by 31½ in. in plain cotton.

Sewing Directions: ¾ in. has been allowed for the skirt seam, 2 in. for the hem and ½ in. for the waistband seams.

(1) With right sides together, baste and

<https://www.knitting-and.com>

fabric in dress design and also

some decorative edgings.

stitch the side seams 1 in. from the edge, leaving an opening of $7\frac{3}{4}$ in. at the top of one seam. Press the seams open. Finish seam edges with machine stitching. (2) Turn skirt right side out and press the right side of opening to the wrong side, along the fitting line. Press the left side of opening towards the front skirt. (3) Place the tape to the wrong side of the left side of opening, edges even. Turn in the lower end $\frac{1}{4}$ in. Baste and slipstitch the tape in position. (4) Run two rows of gathering stitches (one $\frac{1}{8}$ in. above the fitting line, the other $\frac{1}{8}$ in. below) round the waist edge of skirt, starting and finishing at the fitting line of the opening. (It is simpler to control the gathers, if the lines of the gathering stitches are split up into two sections, each one running from seam to seam.) (5) Fold the waistband in half lengthwise, right sides together, raw edges even. Baste vilene to one side, edges even. Baste and stitch one short end. Baste and stitch remaining end to a $\frac{1}{2}$ in. deep point and continue stitching along the long straight edges for 1 in. Trim vilene close to the stitching and trim seams. Clip the seam allowance at the end of stitching on overlap. Turn to the right side, baste pointed end and press. (6) Pull up the gathering threads on the skirt to fit the waistband and sew ends securely. (7) Place

one raw edge of the waistband to the right side of the skirt, fitting lines even and with the overlap extending $1\frac{1}{2}$ in. beyond the front edge of the opening. Baste and stitch along the fitting line. Trim the seam as before. Turn in the remaining long raw edge of waistband and slipstitch in position just above the machine stitching. (8) Sew the eyes on the wrong side at edge of underlap and the hooks on the wrong side of overlap to correspond. (9) Sew the press stud in position to secure the overlap. (10) Sew the remaining press studs in position at the opening. (11) Turn up the hem to the desired length. Turn in the raw edge; baste and slipstitch in position. (12) With right sides together, stitch the short ends of the contrasting bands $\frac{1}{4}$ in. from the raw edges. (13) Turn in the long raw edges $\frac{1}{4}$ in. and baste; place the band on the skirt, with the lower edge of the band $3\frac{3}{4}$ in. from the lower edge of the hem. Baste and stitch in position. (14) Work a small buttonhole bar at lower end of opening to strengthen.

GORED SKIRT

Size: Waist, 25 in.; length, 29 in.

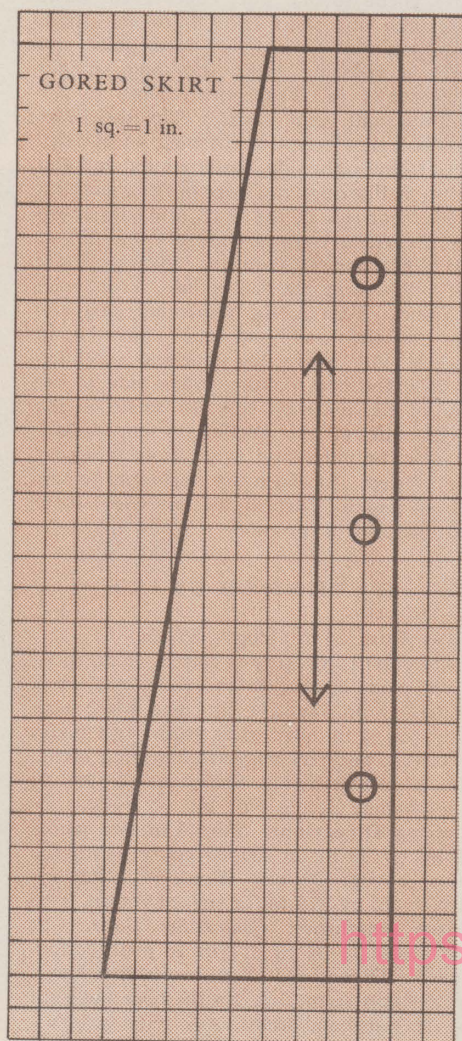
Materials: $2\frac{1}{2}$ yd. plain cotton, 36 in. wide; one piece striped cotton, $4\frac{1}{2}$ in. by 28 in.; one piece vilene, $2\frac{1}{4}$ in. by 28 in.; one light-weight self-locking zip fastener to match, 8 in. long; one press stud; two hooks and eyes; one reel mercerised sewing cotton No. 40 to match; one Sharps needle No. 7; one machine needle No. 14.

Pattern: Make this from the diagram, 1 sq. = 1 in. Solid spots mark the edge to be laid on the folded edge of the fabric. Arrow marks the straight grain.

Cutting Directions: Allow $\frac{3}{8}$ in. for seams and 2 in. for the hem. *Skirt.* Cut six pieces by pattern.

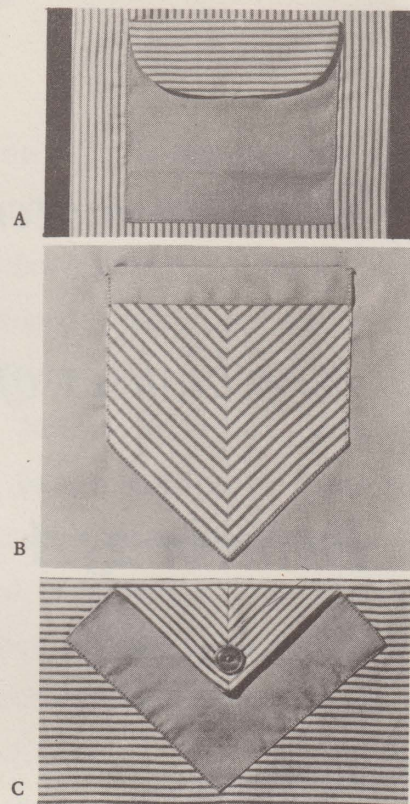
Sewing Directions: $\frac{3}{8}$ in. has been allowed for the waistband seams.

(1) Tailor tack round pattern pieces to mark the stitching lines. (2) Baste and stitch skirt sections right sides together, leaving an opening of $8\frac{3}{4}$ in. at the top of one seam for the zip fastener. Press the seams open and finish the raw edges with machine stitching. (3) Insert the zip fastener in the opening, using the semi-concealed method of application. (4) Fold the waistband in half lengthwise, right sides together, raw edges even. Baste vilene to one side, edges even. Baste and stitch one short end. Baste and stitch remaining end to a 1 in. deep point and continue stitching along the long straight edges for $\frac{1}{2}$ in. Trim vilene close to the stitching and trim seams. Clip the seam allowance at the end of stitching on overlap. Turn to the right side, baste pointed end, and press. (5) Place one raw edge of the waistband to the right side of the skirt, raw edges even and with the overlap extending $1\frac{1}{2}$ in. beyond the front edge of the opening. Baste and stitch along the fitting line. Trim seam as before. Turn in the remaining long raw edge of waistband and slipstitch in position just above the machine stitching. (6) Sew the eyes on the wrong side at edge of underlap and the hooks on the wrong side of overlap to correspond. (7) Sew the press stud in position to secure the overlap. (8) Turn up the hem to the desired length. Turn in the raw edge; baste and slipstitch in position.



PLAIN AND STRIPED FABRIC

When designing your clothes give consideration to the combination of plain and striped fabric, which may add a note of contrast. Here are a few examples.

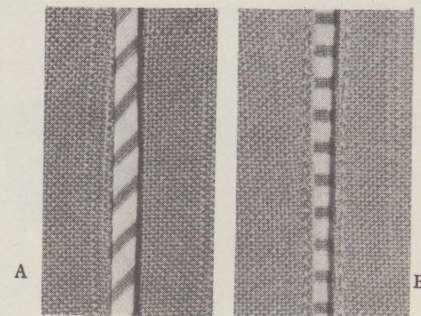


Pockets

(a) This simple patch pocket is made from plain fabric lined with striped fabric. The curved flap is turned down to show the contrast lining.

(b) To make this patch pocket, striped fabric has been joined to form chevron stripes. The top of the pocket is bound with plain fabric.

(c) This patch pocket is lined with striped fabric, joined at the centre to form chevron stripes. The flap is secured with a matching button.



Seams

(a) This Flat seam has a narrow piping of striped fabric, cut on the cross, which is inserted before stitching.

(b) Striped fabric has been used as a backing to this Slot seam. The edges of the plain fabric are $\frac{1}{8}$ in. apart and are topstitched.