



# Thank you

for downloading this pdf file from [Knitting-and.com](https://www.knitting-and.com)!

Your visits have helped keep Knitting-and.com online, providing free crafts and recipes since 1996.

There are hundreds of free patterns and crafts available and more added all the time!

**Note:** The pink watermark on the following pages will not show if you print this file.

<https://www.knitting-and.com>

... *And so to*

# SEW

Three charming blouses



**NDS**

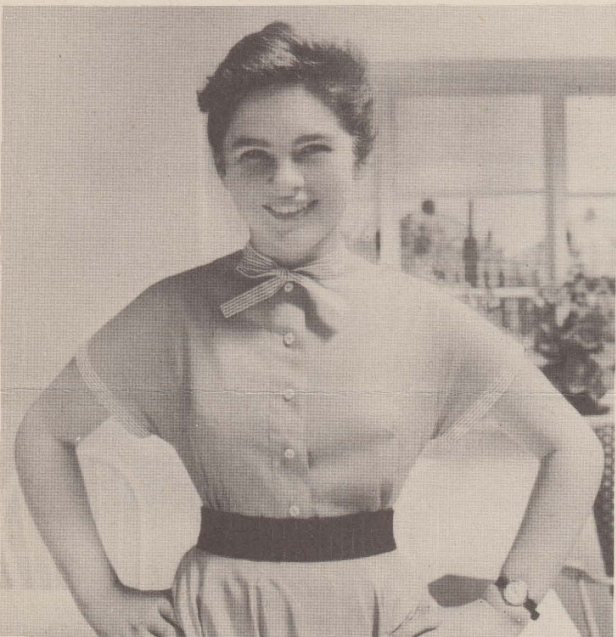
<https://www.knitting-and.com>

**BULLETIN 25A**



*Charming, easily-made*

## **BLOUSES**



BLOUSES are an important part of every girl's wardrobe as they provide a clever way of giving variety to suits and skirts. Three blouses are shown, each with an individual style detail. The first is very simple to make and yet is smart with its contrasting collar and cuffs of striped cotton. The construction of this blouse is shown in easy stages with the corresponding working diagrams—and the only sewing techniques required are: flat seam, dart, simple facing, buttonhole bar and hem.

The second blouse is only slightly more difficult to sew. The neck and the sleeves are bound with straight strips of striped fabric, and the front opening is fastened with press studs. Buttons are then sewn above the press studs. The additional sewing techniques in the construction of this blouse are topstitching and binding.

The third blouse for the older girl is slightly more advanced in style and construction, with its rolled collar, attached cuffs and bound buttonholes. No pattern or instructions are given for this blouse; however, you can find similar styles in any of the commercial paper pattern catalogues.

In Bulletin 26A instructions will be given for the making of three skirts. These skirts have been made to correspond in fabric and style with the blouses. When worn together they have the appearance of a dress and yet each would be equally attractive worn with a plain cotton or woollen blouse. If you wish to make a matching set of blouse and skirt, bear this in mind when purchasing your fabric and allow sufficient (approximately  $2\frac{1}{2}$  yds. 36 in. wide) matching or contrasting fabric. Details for using both will be included.



## BLOUSE 1

**Size:** Bust, 32 in. or 34 in.

**Materials:** 1½ yd. blue cotton, 36 in. wide; ¾ yd. striped cotton, 36 in. wide; one reel mercerised sewing cotton No. 40 to match; one Sharps needle No. 7; one machine needle No. 14.

**Patterns:** Make these from the diagram, 1 sq. = 1 in. Arrows mark the straight grain. Solid lines mark 32 in. bust size; dotted lines mark 34 in. bust size. Solid spots mark the edge to be laid on the folded edge of the fabric. Dart is marked by a broken line. CF marks centre front; CB marks centre back. X marks base of neck opening.

**Cutting directions:** Allow ¼ in. for seams on all pattern pieces and finish the seams with machine stitching.

Pattern A1 (Front). Cut two pieces in blue cotton. Pattern B (Back). Cut one piece in blue cotton. Pattern C (Front Facing). Cut two pieces in striped cotton, reversing the pattern for each piece. Pattern D (Back Facing). Cut one piece in blue cotton. Pattern E (Sleeve Facing). Cut four pieces in striped cotton, reversing the pattern for two pieces.

### Sewing directions:

1. Tailor tack round all pattern pieces and darts to mark the stitching lines. Run a basting thread down the centre back.

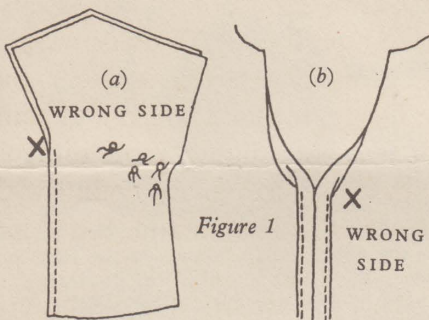


Figure 1

2. Baste and machine stitch the centre front seam to X (Fig 1a). Press the seam open and finish the raw edges (Fig 1b).

3. Baste the darts, side and shoulder seams.

4. Fit the blouse, making any necessary alterations.

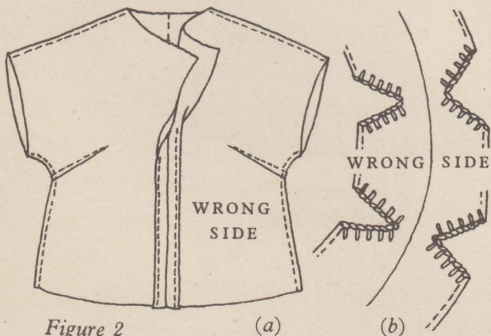


Figure 2

5. Machine stitch darts and press downwards. Machine stitch the side and shoulder seams (Fig 2a); press the seams open and finish the raw edges. Clip the seams at underarm curves to ¼ in. from the stitching line. Finish the raw edges (Fig 2b). On certain fabrics it may be advisable to strengthen the clipped section by placing a small piece of seam binding over it and slipstitching securely.

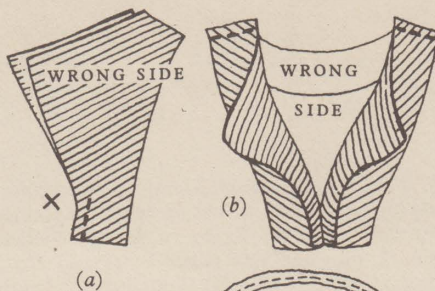


Figure 3

6. Baste and machine stitch centre front seam of front facing to X (Fig 3a). Press seam open. Baste and machine stitch shoulder seams of front and back facings together (Fig 3b). Finish raw outer edges (Fig 3c).

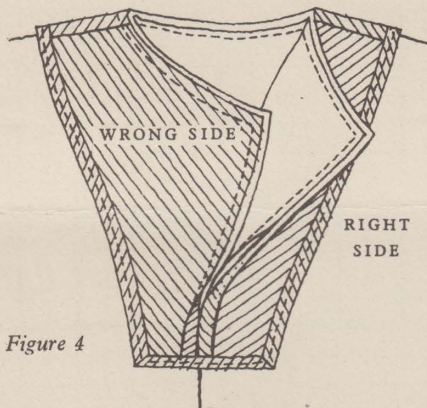


Figure 4

7. Place facings to neck edge, right sides together, raw edges even. Machine stitch round neck edge and down centre front to X (Fig 4). Trim seam and corners, press open. Turn facings to the wrong side and run a basting thread round the outside edge. Press. Catch facing to shoulder seams. Work a buttonhole bar at bottom of front opening to strengthen.

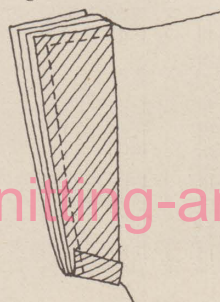
8. Baste and machine stitch the short underarm seams of two sleeve facing sections right sides together, edges even (Fig 5).

9. Unpick the stitching on one shoulder seam 2 in. from sleeve edge.

Figure 5



Figure 6



10. Place facing to sleeve, right sides together, edges even. Machine stitch round the sleeve edge and 2 in. along the shoulder seam (Fig 6). Trim seam and corners, press open. Turn facing to the wrong side and run a basting thread round the outside edge. Press.

11. Turn in raw edge of facing and slipstitch to blouse. Work a buttonhole bar at inner top edge to strengthen opening.

12. Repeat steps 8-11 with remaining sleeve facings.

13. Turn up a ½ in. hem round the lower raw edge. Baste and slipstitch in position.

## BLOUSE 2

**Size:** Bust, 32 in. or 34 in.

**Materials:** 1½ yd. blue cotton, 36 in. wide; one piece blue and white striped cotton 34 in. by 2½ in. for neck binding and ties and two pieces 16 in. by 2½ in. for sleeve bindings; six press studs; one hook; six buttons ½ in. in diameter; one reel mercerised sewing cotton No. 40 to match; one Sharps needle No. 7; one machine needle No. 14.

**Patterns:** Make these from the diagram, 1 sq. = 1 in. Solid spots mark the edge to be laid on the folded edge of the fabric. Arrows mark the straight grain. Solid lines mark 32 in. bust size; dotted lines mark 34 in. bust size. CF marks centre front; CB marks centre back. Dart is marked by a broken line. Xs mark position of buttons.

**Cutting directions:** Allow ¼ in. for seams on all pattern pieces and finish the seams with machine stitching.

Pattern A2 (Front). Cut two pieces.

Pattern B (Back). Cut one piece.

**Sewing directions:** ½ in. has been allowed on all binding sections.

1. Tailor tack round all pattern pieces and darts to mark the stitching lines. Run a basting thread down the centre front and centre back.

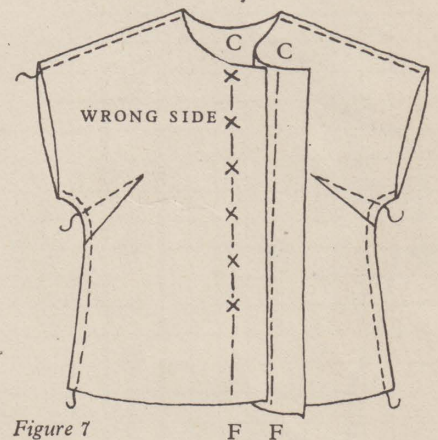


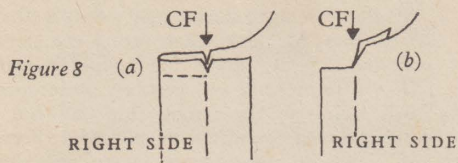
Figure 7

2. Baste the darts, side and shoulder seams (Fig 7).

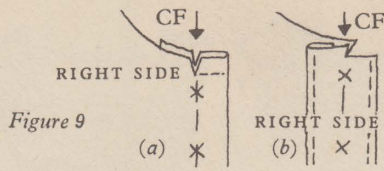
3. Fit the blouse, making any necessary alterations.

4. Machine stitch darts and press downwards. Machine stitch the side and shoulder seams, press the seams open and finish the raw edges. Clip the seams at underarm curves to ¼ in. from the stitching line as shown for Blouse 1. Finish the raw edges.

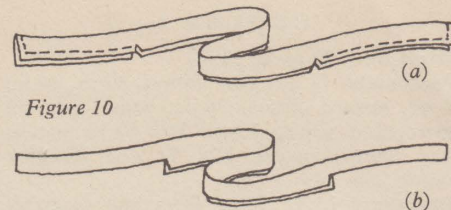
5. Trim ½ in. from the seam allowance of each front facing.



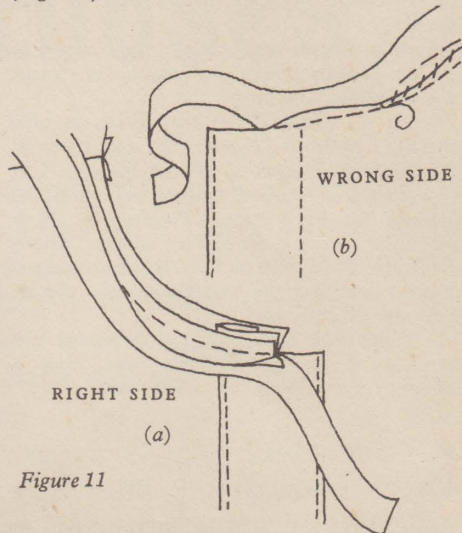
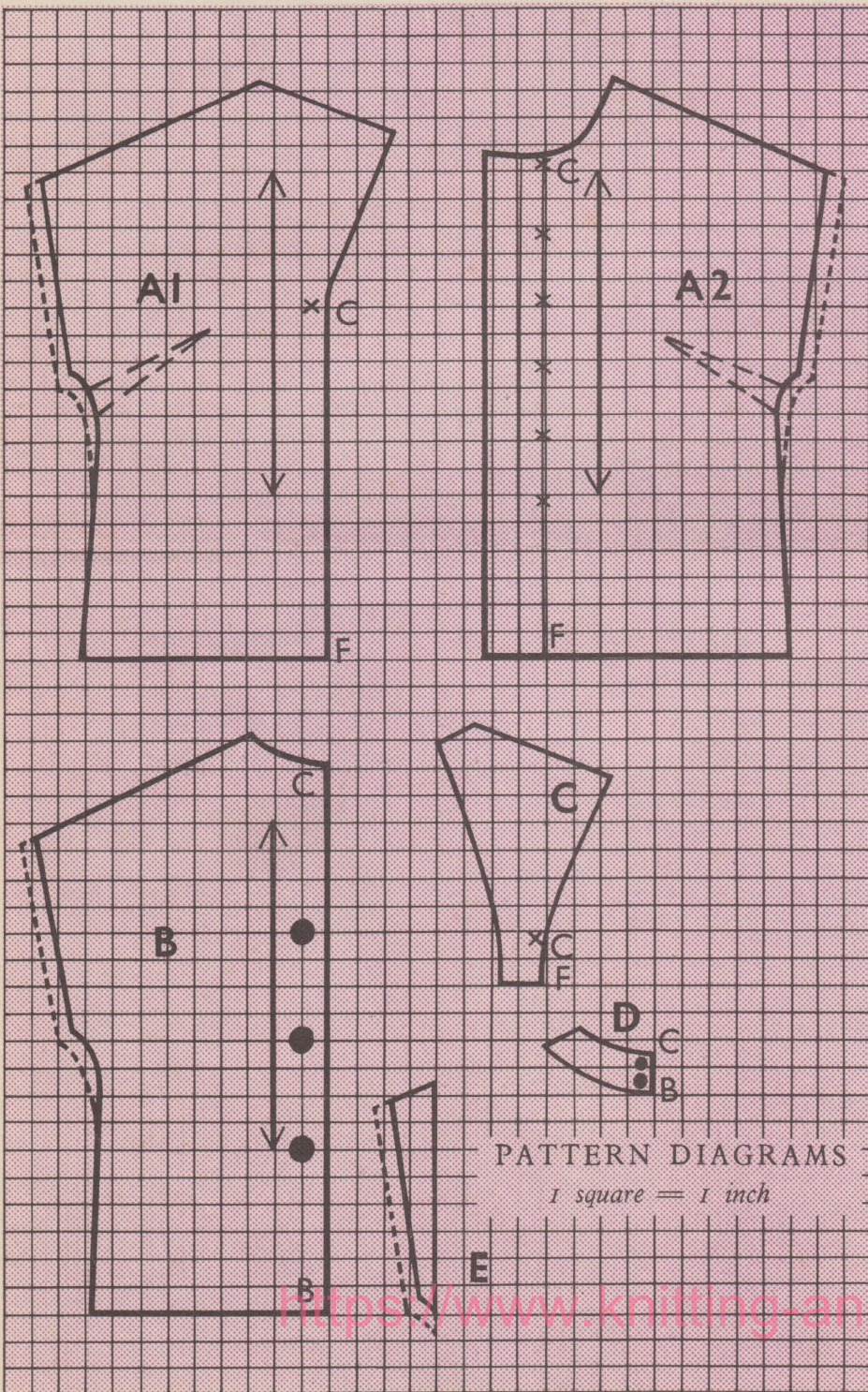
6. Fold the left front facing to the right side for  $1\frac{1}{2}$  in. Baste and stitch from the front edge to the centre front. Trim seam and clip to the stitching at the centre front (Fig 8a). Turn the facing to the wrong side and finish the raw edge (Fig 8b).



7. Fold the right front facing to the wrong side for  $1\frac{1}{2}$  in. and stitch as for left front facing (Fig 9a). Turn the facing to the right side, turn in the long raw edge; baste and topstitch in position (Fig 9b). Topstitch the front edge close to the fold.

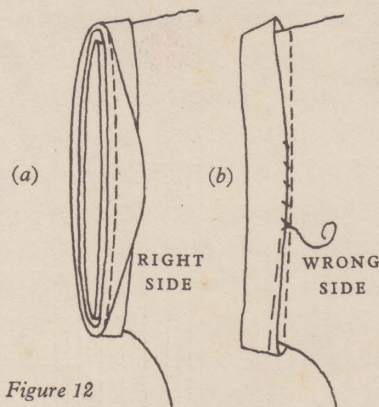


8. Fold the neck binding and tie strip in half lengthwise, right sides together. Baste and stitch short ends and  $9\frac{1}{2}$  in. in from each end, for ties. Trim seams; clip to the stitching (Fig 10a). Turn to the right side. Press (Fig 10b).



9. Place one raw edge of neck binding to neck edge, right sides together, fitting lines even. Baste and stitch along the fitting line (Fig 11a). Trim seam and press. Fold binding to the wrong side and turn in the long raw edge. Baste and slipstitch in position, just above the machine stitching (Fig 11b).

10. Baste and stitch the short ends of each sleeve binding, right sides together. Trim the seams and press open. Fold each binding in half lengthwise, wrong sides together.



11. Bind the sleeves in the same way as the neck (Fig 12a and b).  
12. Turn up a  $\frac{1}{2}$  in. hem round the lower edge. Baste and slipstitch in position.  
13. Sew buttons in position. Sew press studs down front opening to correspond.  
14. Sew the hook at the top of the opening and work a buttonhole bar to correspond.