



Thank you

for downloading this pdf file from [Knitting-and.com](https://www.knitting-and.com)!

Your visits have helped keep Knitting-and.com online, providing free crafts and recipes since 1996.

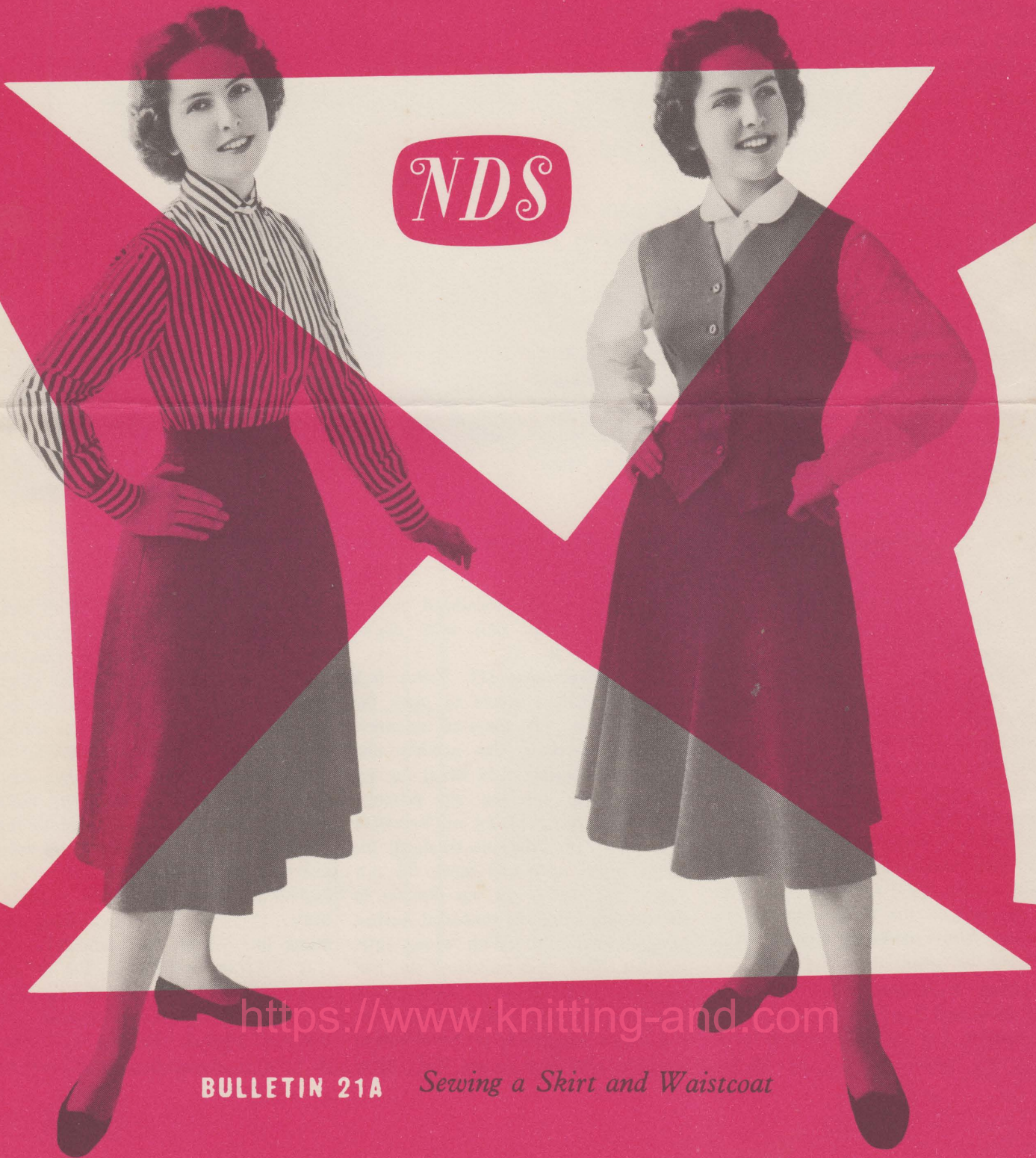
There are hundreds of free patterns and crafts available and more added all the time!

Note: The pink watermark on the following pages will not show if you print this file.

<https://www.knitting-and.com>

... And so to

SEW



NDS

<https://www.knitting-and.com>

BULLETIN 21A *Sewing a Skirt and Waistcoat*

Make this versatile Skirt and

THIS IS AN OUTFIT that will win approval, not only for its smartness, for its infinite versatility but also it is extremely practical. The six gored skirt is made from grey worsted flannel and the tailored waistcoat from fine green wool gaberdine. The skirt may be worn with a variety of blouses and sweaters, plain, checked or striped and the waistcoat would be perfect with any style of suit.

For summer wear, the skirt may be made from poplin, gay chintz or linen and for parties in taffeta or faille.

If the skirt is to be made from a lightweight fabric and therefore a wider hemline is required, use the panel with the dotted line given on the diagram. Do not use the wide panel for woollen fabric. If desired, a paper pattern may be used. Select a similar style from a pattern catalogue. Look out for the new printed patterns, as they give additional help in cutting and sewing.



In Bulletin No. 22A, instructions are given for the making of children's dresses.

SKIRT

Size: Waist 26 in.

Materials: $1\frac{7}{8}$ yd. 54 in. wide fabric; or $3\frac{1}{4}$ yd. 36 in. wide fabric; $\frac{7}{8}$ yd. petersham ribbon, $1\frac{1}{2}$ in. wide; one lightweight self-locking zip fastener, 9 in. long; two hooks and eyes; two press studs; one reel mercerised sewing cotton No. 40 to match; one Sharps needle No. 7; one machine needle No. 14.

Pattern: Make this from the diagram, 1 sq.=1 in. Solid spots mark the edge to be laid on the folded edge of the fabric. Arrow marks the straight grain. Dotted line marks the wider panel.

Cutting directions: Allow $\frac{3}{4}$ in. for all seams and 2 in. for the hem.

Pattern A Cut six pieces. Waistband. Cut one piece, $28\frac{1}{2}$ in. by $4\frac{1}{2}$ in.

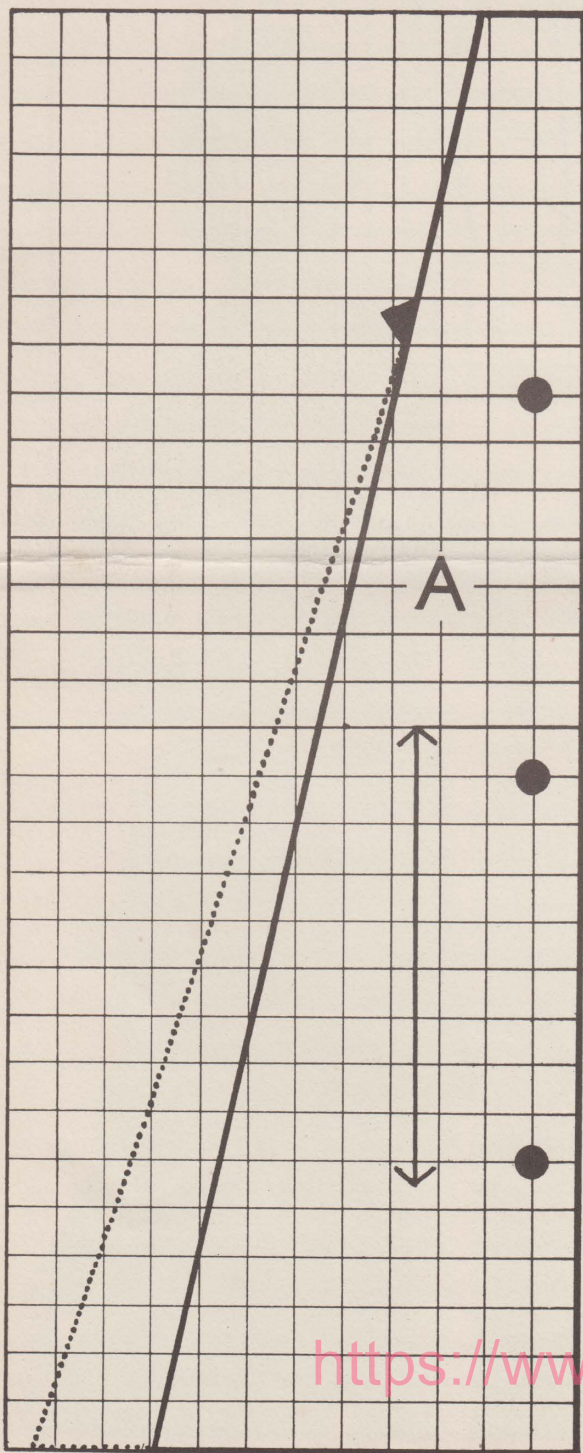
The length of the waistband is the waist measurement plus seam allowance and overlap.

Sewing directions: (1) Tailor tack round all pattern pieces to mark the stitching lines. (2) Baste all the panels together, matching the notches and leaving an opening of $9\frac{3}{4}$ in. at the top of one seam for the zip fastener. (3) Fit the skirt, making any necessary alterations. (4) Machine stitch all the seams; press open and finish the raw edges. (5) Insert the zip fastener in the opening, using the concealed method of application. (6) With wrong sides together, fold the waistband in half lengthwise and press. (7) Open out the waistband and place the petersham ribbon on the wrong side of the waistband with one long edge to the fold. Baste

the ribbon in position. (8) With right sides together, fold the waistband in half lengthwise; baste and machine stitch the two short ends and stitch along the raw edges 1 in. from one end for the overlap. (9) Trim the seams, clip the seam allowance to the end of the stitching on the lower edge; turn to the right side and press. (10) Place one raw edge of the waistband to the right side of the skirt, raw edges even and with the overlap extending 1 in. beyond the front edge of the opening. Baste. (11) Machine stitch along the fitting line. Trim the seam to $\frac{1}{4}$ in. (12) Fold the waistband over to the wrong side; turn in the remaining long raw edge and slipstitch in position just above the machine stitching. (13) Sew the hooks on the overlap and the eyes to

d Waistcoat

SKIRT DIAGRAM



correspond on the underlap. (14) Sew the press studs in position to secure the overlap. (15) Measure the hem and turn up to the desired length. (16) Finish the raw edge of the hem and secure with invisible catch stitches (Bulletin No. 10A).

WAISTCOAT

Size: Bust 32 in. or 34 in.

Materials: $\frac{7}{8}$ yd. fine wool gaberdine, 54 in. wide; one card bias binding to match; five buttons, $\frac{5}{8}$ in. diameter; one reel mercerised sewing cotton No. 40 to match; one Sharps needle No. 7; one machine needle No. 14.

Patterns: Make these from the diagram, 1 sq.=1 in. Solid lines mark 32 in. bust size; dotted lines mark 34 in. bust size. Solid spots mark the edge to be laid on the folded edge of the fabric. Arrows mark the straight grain. Broken lines mark the darts. Position of buttonholes is marked by $\text{---} \perp \text{---}$. CF marks centre front; CB marks centre back. Shaded section mark the facing.

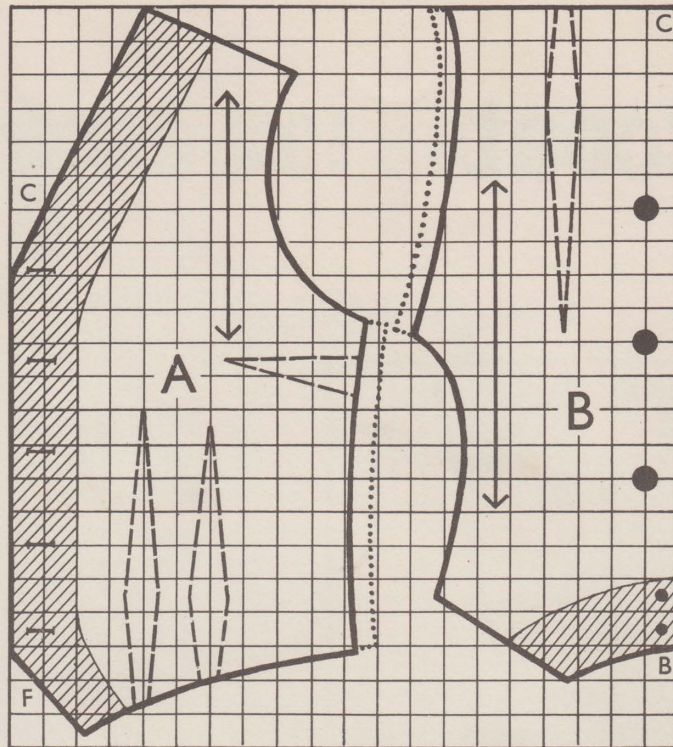
Cutting directions: Allow $\frac{1}{2}$ in. for seams on all pattern pieces.

Pattern A (Front) Cut two pieces.

Pattern B (Back) Cut one piece.

Front Facing. Cut two pieces from the shaded section on front bodice. Back Neck Facing. Cut one piece from the shaded section on back bodice. Bound Buttonholes. Cut five pieces, 2 in. by $1\frac{3}{4}$ in.

Sewing directions: (1) Tailor tack round all pattern pieces and darts to mark the stitching lines. (2) Run a basting stitch down the centre back. (3) Pin and baste the darts on the front and back bodice sections. (4) Baste the side and shoulder seams. (5) Fit the waistcoat, making any necessary alterations. (6) Machine stitch the darts and press towards the centre. (7) Machine stitch the side and shoulder seams. Press the seams open and finish the raw edges. (8) Make the bound buttonholes. (9) With the right sides together and raw edges even, baste and stitch the back neck facing to the front facing at the shoulders. Trim the seams and press open. (10) With right sides together and raw edges even, place the facing



WAISTCOAT
DIAGRAM

in position, centre backs and shoulder line. Join the ends of the binding at the underarm. Baste and stitch. (14) Trim the seam to $\frac{1}{4}$ in., turn the binding to the wrong side and slipstitch. (15) Repeat on the other armhole. (16) Finish the lower edge of the waistcoat with bias binding in the same way. (17) Sew on buttons to correspond with the buttonholes.

line. Join the ends of the binding at the underarm. Baste and stitch. (14) Trim the seam to $\frac{1}{4}$ in., turn the binding to the wrong side and slipstitch. (15) Repeat on the other armhole. (16) Finish the lower edge of the waistcoat with bias binding in the same way. (17) Sew on buttons to correspond with the buttonholes.

