



Thank you

for downloading this pdf file from [Knitting-and.com](https://www.knitting-and.com)!

Your visits have helped keep Knitting-and.com online, providing free crafts and recipes since 1996.

There are hundreds of free patterns and crafts available and more added all the time!

Note: The pink watermark on the following pages will not show if you print this file.

<https://www.knitting-and.com>

... And so to

SEW



**A cotton dressing-gown
and a fine woollen housecoat**

<https://www.knittingand.com>



BULLETIN 18a

so attractive . . . so **COSY**

COTTON DRESSING-GOWN

Size: BUST, 32 in. to 36 in.; BACK LENGTH (neck to lower raw edge), 47 in.

Materials: 3½ yds. patterned cotton, 36 in. wide; scraps of plain cotton (two pieces 7 in. × 15 in., one piece 4 in. × 14½ in., and one piece 4 in. × 47 in.); four press studs; one hook; one reel mercerised sewing cotton No. 40 to match; one Sharps needle No. 7; one machine needle No. 16.

Patterns: make these from Diagram, 1 sq.=1 in. (as described in Bulletin No. 2A). Arrows mark straight grain.

Cutting directions: allow ½ in. or ¾ in. for seams on all pattern pieces, depending upon method used to finish seams (either topstitching or overcasting).

PATTERN A, Front, cut two pieces from patterned cotton, with centre front to selvedge.

PATTERN B, Back, cut two pieces from patterned cotton. **PATTERN C, Sleeve,** cut four pieces from patterned cotton. **Cuffs,** cut two pieces, 7 in. × 15 in. from plain cotton.

Collar, cut one piece, 4 in. × 14½ in. from plain cotton. **Front Facing,** cut one piece, 4 in. × 47 in. from plain cotton. (Note, if it is necessary to piece this strip, construct the seam so that it will lie on the waistline). **Belt,** cut one piece, 5 in. × 65 in. from patterned cotton (piece where necessary). **Belt Carriers,** cut two pieces, 1½ in. × 3½ in. from patterned cotton.

Sewing directions: (1) Tailor tack round all pattern pieces to mark stitching lines.

(2) Baste a sleeve section in position to each front and back section, matching notches; stitch seams. (3) Join back sections at centre back. Press all seams open and finish raw edges. (4) Baste front and back sections together matching notches; stitch upper sleeve seams, underarm seams, and side seams. Press all seams and finish raw edges.

(5) Cut a 2½ in. strip from the right front edge. Baste one long edge of front facing to right side of front, right sides together, raw edges even; stitch and press. (6) Turn in remaining long raw edge of facing ½ in. and slipstitch to wrong side of garment just above stitching line. (7) On left side of front, turn back edge 1½ in. for facing; baste. Slit neck edge depth of seam allowance at ends of facings (Diagram 1). Finish off neck edges of facings, by turning raw edges inwards and slipstitching. (8) Place one long edge of collar to neck edge of garment, right sides together, centre of collar to centre of neck edge. Baste, stitch and press. Turn in remaining long raw edge ¼ in. and slipstitch to wrong side just above stitching line.

Turn in ends of collar concealing raw edges and slipstitch. (9) Baste cuff seams and stitch; press. Place one raw edge of cuff to sleeve, right sides together, raw edges even. Baste, stitch and press. Turn in ½ in. on remaining raw edge and slipstitch to wrong side just above stitching line. Repeat with other cuff. Press cuffs upwards 1½ in. (10) Sew a press stud in position at centre of facing, ½ in. down from top edge. Sew remaining press studs in position at intervals of four inches. (11) Sew a hook at top corner of right facing. Work a buttonhole bar on left facing to correspond. (12) Turn up hem to desired length, turn in raw edge and slipstitch. (13) Fold belt in half lengthwise, right sides together and stitch long raw edges leaving in the centre an opening of three inches. Press seam open and press belt with seam lying along the centre of the strip. Stitch points as in Diagram 2, trim seams, clip points and turn belt to right side through the centre opening. Slipstitch opening. Press belt. (14) Fold belt carriers in half lengthwise, right sides together. Stitch long raw edges and one short end. Trim raw edges to ¼ in. from stitching line and turn carrier to right side. Turn raw edges inwards and slipstitch. Stitch belt carriers securely in position over waistline at side seams.

WOOLLEN HOUSECOAT

Size: BUST, 32 in. to 34 in.; WAIST, 26 in.; LENGTH OF SKIRT, 40 in.

Materials: 3½ yds. fine woollen fabric, 54 in. wide; one lightweight, self-locking zip fastener, 36 in. long, to match; one card bias binding to match; one reel mercerised sewing cotton No. 40 to match; one Sharps needle No. 7; one machine needle No. 16.

Patterns: make these from Diagram, 1 sq.=1 in. (as described in Bulletin No. 2A). Solid spots mark edge to be laid on folded edge of fabric. Arrows mark straight grain. Broken lines mark darts.

Cutting directions: allow ½ in. for seams on all pattern pieces. Finish seam edges with overcasting or blanket stitch.

PATTERN A, FRONT BODICE, cut two pieces.

PATTERN B, BACK BODICE, cut one piece.

PATTERN C, FRONT SKIRT, cut two pieces.

PATTERN D, BACK SKIRT, cut one piece.

PATTERN E, FACING, cut two pieces.

PATTERN F, COLLAR, cut two pieces. **BELT,** cut a strip, 54 in. × 4 in. (piece where necessary).

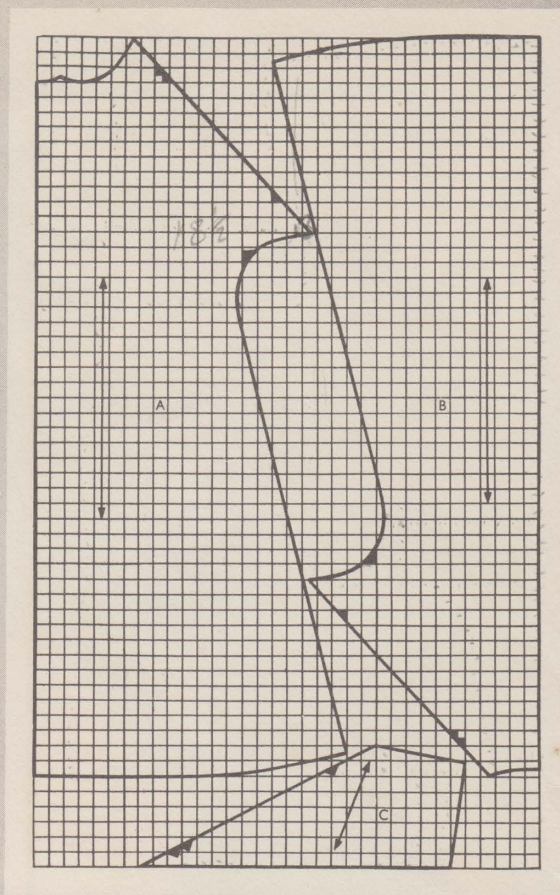
Sewing directions: (1) Tailor tack round all pattern pieces and darts to mark stitching lines. Run a basting stitch down centre back

of bodice. (2) Baste darts on back and front bodice sections and on sleeves. Baste side and shoulder seams on bodice. (3) Fit bodice making any necessary alterations. (4) Machine stitch all darts. Press bodice darts towards the centre and sleeve darts upwards. Machine stitch side and shoulder seams; press seams open. Clip seams at underarm curves to ¼ in. from stitching line and finish all raw seam edges. (5) Lay collar sections right sides together, raw edges even; baste and stitch. Clip points, trim seam to ¼ in. and turn collar to right side; press. (6) Lay collar to right side of bodice, centre backs matching and raw neck edges even; baste in position. Lay facings in position on bodice sections, right sides together, raw edges even, with neck section of each facing overlapping collar. Lay a strip of bias binding (with one fold line to the fitting line) the length of the collar between the ends of the facings, plus ½ in. on each side. In one process, stitch through all thicknesses, up one front facing round neck edge and down the other front facing. Trim seams to ¼ in. and turn facings to wrong side of bodice. Run a basting thread round collar edge and down edges of facings. Fold bias binding over to wrong side of bodice and slipstitch invisibly. Turn in shoulder edge of facings ¼ in. and slipstitch to shoulder seams of bodice. Finish raw edges of facings. (7) Press bodice thoroughly. (8) Run two rows of gathering threads on front skirt sections between points marked X. (9) Baste centre front seam of skirt and stitch, leaving an opening of thirty inches for the zip fastener. Press seam and basted section open and finish raw edges. Remove basting threads. Run a basting thread down folded edge of each side of front skirt opening. (10) Baste and stitch side seams of skirt section. Press seams open and finish. (11) Pull up gathering threads of front skirt sections between the Xs so that the front skirt waist measurement is equal to that of the front bodice waist measurement. Lay bodice to skirt, right sides together, side seams matching and fronts even. Baste and stitch waist seam; press open. Press both edges of seam upwards and finish raw edges together. (12) Insert zip fastener. (13) Trim sleeve to required length. With raw edges even, place a piece of bias binding to lower edge of each sleeve. Stitch along fold of binding, turn binding to wrong side and slipstitch to garment. (14) Turn up lower hem to desired length and finish with bias binding as for sleeve. (15) Make belt carriers and belt exactly as described in the instructions for the cotton dressing-gown.

Do you know that you may buy, post free, back numbers of the sewing and embroidery bulletins in attractive wallets? These may be obtained

Nos. 1A-12A in wallet, price 1/9 (Sewing) Nos. 1B-12B in wallet, price 1/9 (Embroidery)

Nos. 13A-17A in wallet, price 1/- (Sewing) Nos. 13B-17B in



A dressing-gown or housecoat is essential to every wardrobe. This attractive dressing-gown is made of white cotton, printed with a design of black stars and is trimmed with a 'vermillion cotton collar, cuffs and front facing. With its straight seams, easily constructed sleeves and no fitting problems, it has been designed for the beginner in sewing. Its simplicity of style makes it easily adaptable to a wide range of sizes.

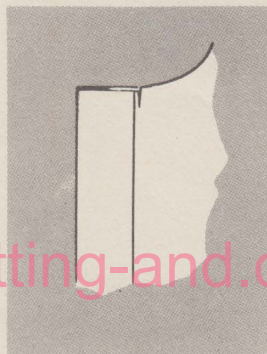


DIAGRAM 1

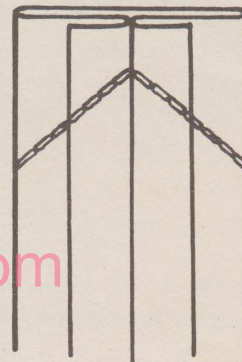
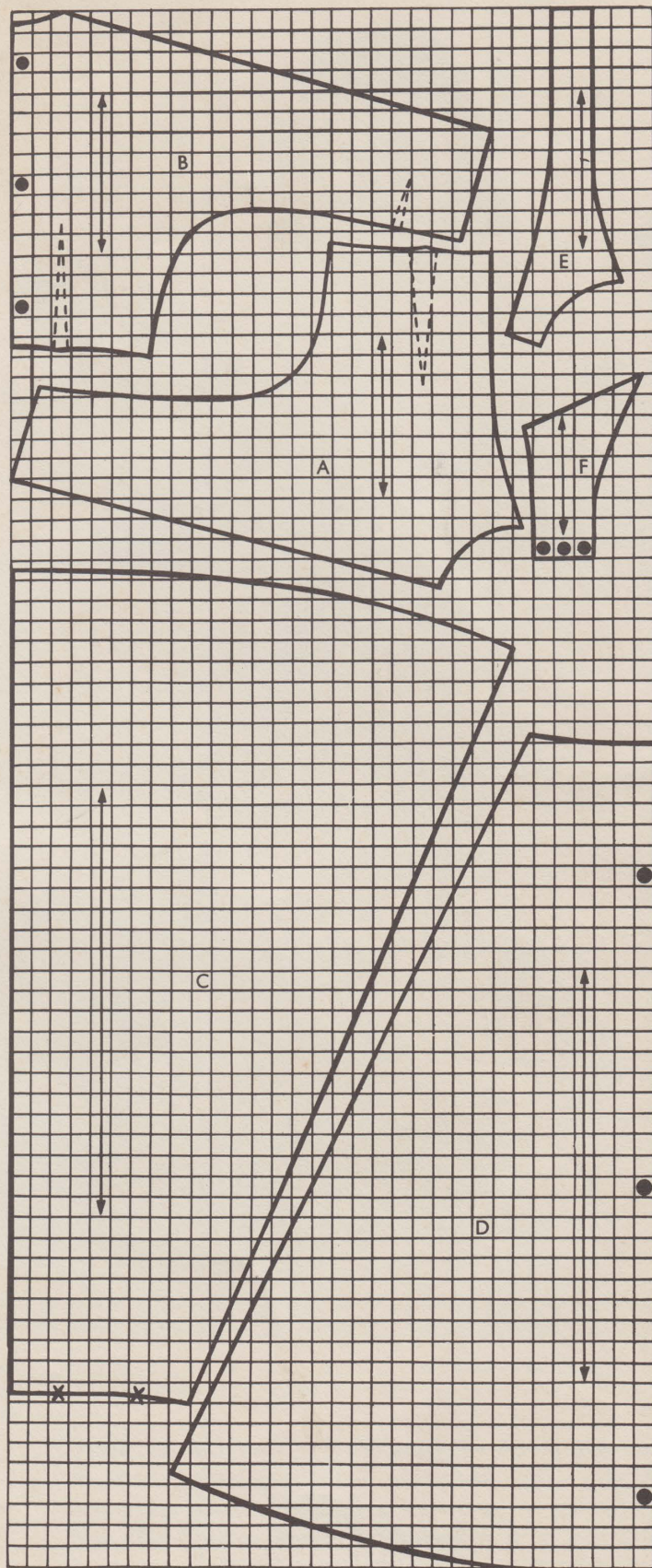


DIAGRAM 2

The house-coat of fine turquoise woollen fabric is cosy for chill winter mornings, yet attractive enough to wear during a quiet evening at the fireside.



<https://www.knitting-and.com>

Our next bulletin contains complete instructions on the different methods of applying zip fasteners, one of which is shown on an attractive woollen dress.