



Thank you

for downloading this pdf file from [Knitting-and.com](https://www.knitting-and.com)!

Your visits have helped keep Knitting-and.com online, providing free crafts and recipes since 1996.

There are hundreds of free patterns and crafts available and more added all the time!

Note: The pink watermark on the following pages will not show if you print this file.

<https://www.knitting-and.com>

... And so to SEW



NDS



<https://www.knitting-and.com>

BULLETIN 16A • Simple Cap Sleeve Blouses



Simple CAP SLEEVE BLOUSES

“SEPARATES” ARE STILL NEWS—but whatever the fashion, they will always be an important part of the smart girl’s wardrobe, owing to their practicability and to the variety they may add.

For those who may not have met this word before—‘separates’ are blouses, skirts, jackets and boleros that may be teamed in pairs again and again—each time forming a new pattern or colour combination. Jean and Elizabeth are still at work on their year’s sewing project—and are now planning a set of cap sleeve blouses, one to suit every possible occasion. The basic style they have selected is simple, with the minimum of sewing techniques and each process is easy and quick.

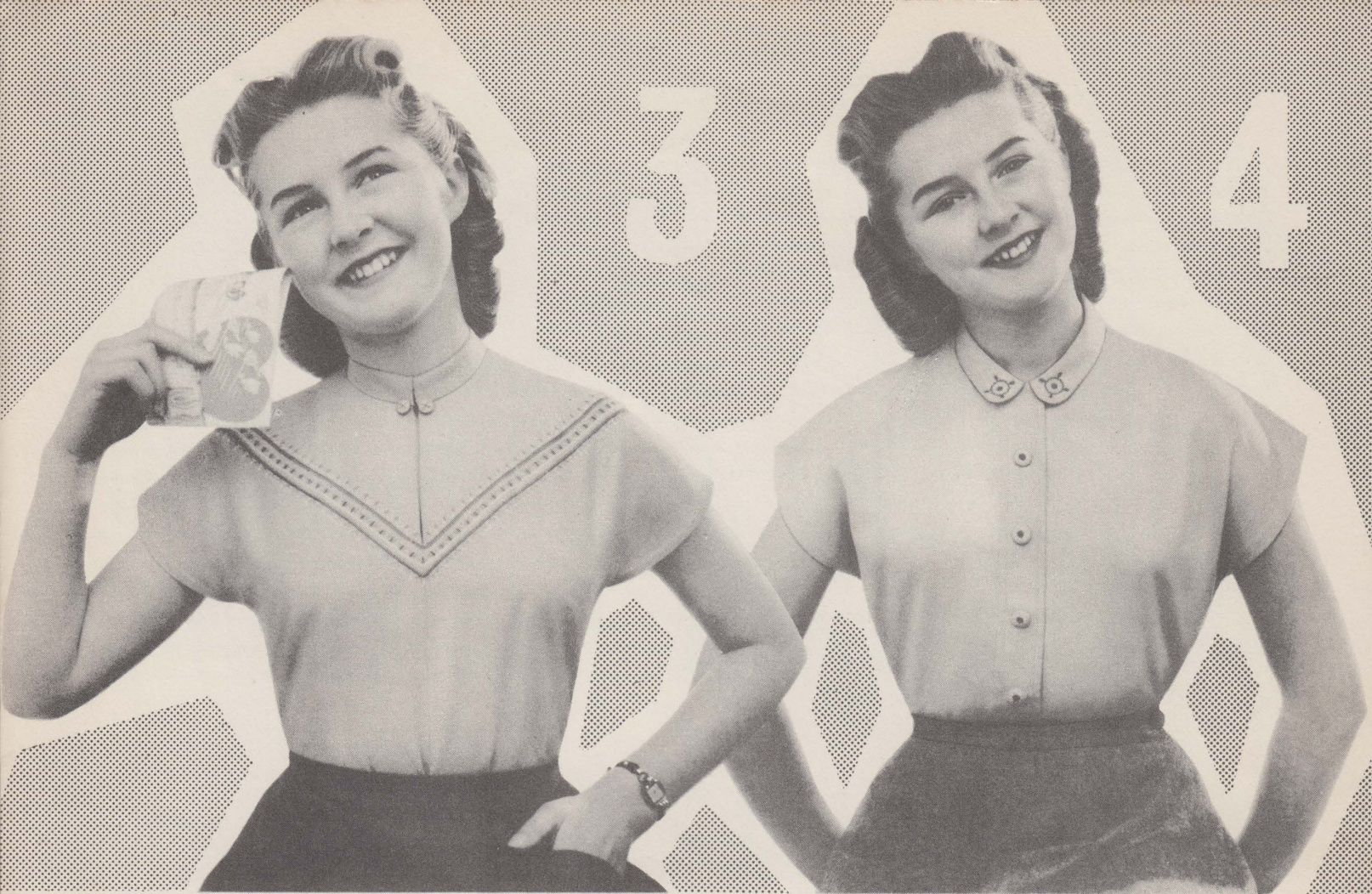
Choice of fabric will depend upon the purpose of the blouse, and also on the selected trimmings. Suitable fabrics are firm cotton, poplin, gingham, linen, dupion, dull surfaced rayon and silk. As not more than $1\frac{1}{2}$ yds. of fabric are required, these blouses can be made from remnant pieces.

Elizabeth’s blouse of bold blue and white checked gingham is trimmed with white rick-rack braid and machine stitching. It is interesting to note how the checked fabric has been pleated to form two bands of dark blue on the upper part of the bodice. For her second blouse, plain pink cotton is allied

with dark grey and pink checked cotton. The checked cotton trims the neckline and forms an attractive front opening, constructed from two double strips of fabric, which are seamed together with overcasting, spaces being left in the seam to form buttonholes.

Jean’s blouses have the added elegance of touches of simple embroidery. The first is made from pale turquoise dupion, with a yoke outline embroidered in stranded cotton in dark turquoise, dark pink and white. The stitches used are, Buttonhole Stitch, Chain Stitch, Detached Chain Stitch, Stem Stitch, Fly Stitch and Whipped Running Stitch. The second blouse in blue linen, has embroidered motifs on the collar with matching embroidered buttons. The motifs are embroidered in stranded cotton in dark blue and white. The stitches used are Satin Stitch, Detached Chain Stitch, French Knots and Fly Stitch.

The checked gingham blouse is made from the basic pattern given and the other three blouses are simple adaptations of this style. This pattern is given in two sizes—dotted lines mark size 32 in. and heavy lines size 34 in., x marks base of armhole. For Embroidery stitches refer to the Embroidery Bulletins.



CHECKED GINGHAM BLOUSE (1)

The striped effect is obtained by folding the fabric so that three dark checked bands are adjacent. Baste these folds or tucks accurately with all checks matching, then top stitch along the folds. This must be done before cutting the blouse.

Materials: 1½ yds. checked Gingham, 36 in. wide. 2¼ yds. white Rick-Rack Braid. 1 small Hook. 1 reel Mercerised Sewing Cotton No. 40 to match. 1 Sharps Needle No. 7. 1 Machine Needle No. 14.

Patterns: Make these from diagram, 1 sq. = 1 in. Arrows mark straight grain.

Cutting Directions: Allow ½ in. seams round all patterns when cutting.

Pattern A—Front—Cut one piece, with centre front to a fold.

Pattern B—Back—Cut two pieces, with the centre back ½ in. from the selvedge edges.

Neck Binding—Cut a crossway strip of fabric, length round neck edge plus 1 in. x 1½ in.

Sewing Directions: 1. Tailor tack round all pattern pieces and darts to mark stitching lines. Run a basting thread down the centre front. 2. Baste and machine stitch darts on back bodice. Press towards the centre back. 3. Pin and baste side seams, shoulder seams and centre back seam (leaving a 5-in. opening at the top of centre back seam). 4. Fit blouse, making any necessary alterations. 5. Machine stitch seams and press. Finish raw edges on

shoulder and side seams with overcasting. 6. Make a ⅜ in. hem round the lower raw edge and armhole edges. Baste and slipstitch in position. 7. Sew a small piece of tape or work a buttonhole bar, at lower inside edge of armhole, to strengthen. 8. Place neck binding to neck edge, right sides together, raw edges even; baste and stitch along fitting line. Trim seam to ¼ in. 9. Fold binding over to the wrong side. Turn in the long raw edge and the two short ends, baste. Slipstitch in position to machine stitching. 10. Sew the small hook at the top of back opening on the wrong side. Work a buttonhole loop on the other side of opening to correspond with hook.

BLOUSE WITH CHECKED FABRIC TRIMMING (2)

Materials: 1½ yds. firm Cotton, 36 in. wide. Scraps of toning checked Gingham. 1 small Hook. 1 small Press Stud. 6 Buttons, ⅝ in. in diameter. 1 reel Mercerised Sewing Cotton No. 40 to match. 1 Sharps Needle No. 7. 1 Machine Needle No. 14.

Cutting Directions: Allow ½ in. seams round all patterns when cutting.

Pattern A—Front—Cut two pieces, with the centre front ½ in. from selvedge edges.

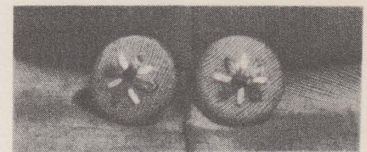
Pattern B—Back—Cut one piece, with the centre back to a fold.

Button Stand—Cut one piece 2¼ in. x length of the centre front.

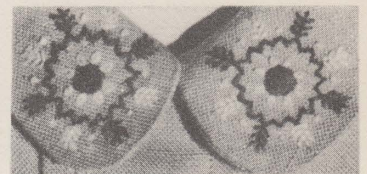
SECTION OF EMBROIDERED YOKE



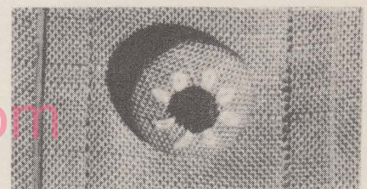
BUTTON MOTIF

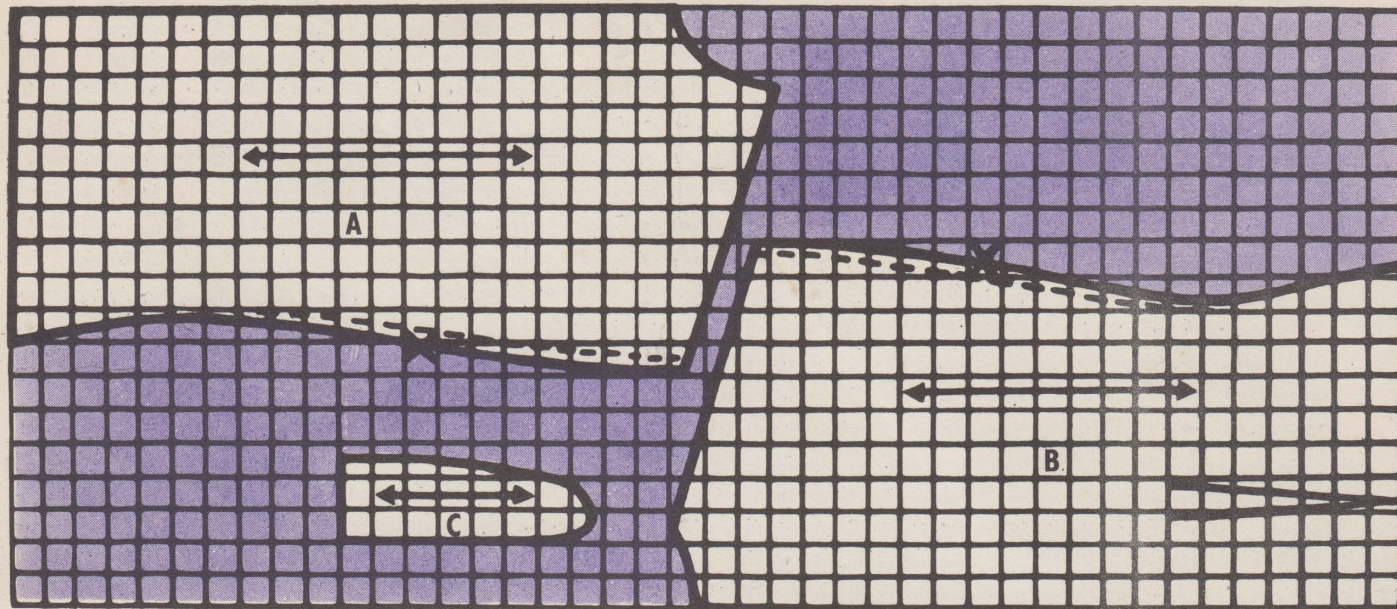


COLLAR MOTIF



BUTTON MOTIF





Buttonhole Stand—Cut two strips $2\frac{1}{2}$ in. x length of the centre front, from contrast checked fabric.

Neck Binding—Cut a crossway strip of fabric, length round neck edge plus 1 in. x $1\frac{1}{2}$ in.

Sewing Directions: Follow directions for Blouse 1, Steps 1—5, but with the basting thread down centre back. 6. Trim off seam allowance on right front. 7. Fold one checked strip in half lengthwise, wrong sides together. Press. Place one long edge of this piece to the raw edge of right front, right sides together, edges even. Baste and machine stitch $\frac{1}{2}$ in. from the raw edges. Turn in other raw edge $\frac{1}{2}$ in. and slip stitch to wrong side of blouse, to the machine stitching. 8. Fold other checked strip in half lengthwise, right sides together, edges even; machine stitch $\frac{1}{2}$ in. from long raw edges, press seam open and turn to right side. Place fold edge of this strip to the first strip, right sides together and checks matching; oversew together, leaving $\frac{3}{8}$ in. openings at $1\frac{1}{2}$ in. intervals for buttonholes. 9. Apply the button stand in the same way as the first step of the buttonhole stand (Step 7 above). Continue with Steps 6, 7, 8 and 9 of Blouse 1. 10. Sew buttons in position to correspond with buttonholes. Finish neck edge with a press stud, hook and buttonhole loop.

BLOUSE WITH EMBROIDERED YOKE (3)

Materials: $1\frac{1}{4}$ yds. Dupion, 36 in. wide. 1 Hook. 2 Button Moulds. Stranded Cotton in three selected shades. 1 reel Mercerised Sewing Cotton No. 40. 1 Sharps Needle No. 7. 1 Machine Needle No. 14. 1 Crewel Needle No. 7 (for embroidery).

Cutting Directions: Cut similar to Blouse

2 omitting the button stand, buttonhole stand and neck binding.

Mandarin Collar: Cut a strip, length round neck plus 1 in. x 3 in.

Sewing Directions: Follow direction for Blouse 1, Steps 1—5 but with the seam and opening at the centre front and the basting thread down the centre back. 6. Fold collar in half lengthwise, right sides together; stitch short ends with $\frac{1}{2}$ in. seams. Trim seams to $\frac{1}{4}$ in. and turn collar to right side. Press. 7. Baste one edge of collar to right side of neck edge, raw edges even and centre backs matching. Stitch along fitting line. 8. Turn in remaining raw edge of collar $\frac{1}{2}$ in. and slipstitch in position to the machine stitching. Continue with Steps 6 and 7 of Blouse 1 and sew a small hook and buttonhole bar at neckline.

Embroidery: Yoke—Run basting threads from shoulder seams to end of neck opening as a guide for the embroidery. Embroider as in close-up.

Buttons—Cut two circles of fabric to cover button moulds completely. Embroider a small motif in the centre of each. Run gathering stitches round outside edge of each circle. Fit over button moulds; turn in raw edges and pull gathering threads tight. Sew buttons in position.

BLOUSE WITH EMBROIDERED MOTIFS (4)

Materials: $1\frac{1}{4}$ yds. Linen, 36 in. wide. 1 Hook. 6 Press Studs. 5 Button Moulds. Stranded Cotton in two selected shades. 1 reel Mercerised Sewing Cotton No. 40. 1 Sharps Needle No. 7. 1 Machine Needle No. 14. 1 Crewel Needle No. 7 (for

embroidery).

Cutting Directions: Cut bodice sections similar to Blouse 2.

Collar—Cut two pieces from Pattern C, with small straight edge to a fold.

Centre Front Panel—Cut a strip $3\frac{1}{2}$ in. x length of centre front.

Button Stand—Cut similar to Blouse 2.

Sewing Directions: Follow directions for Blouse 1, Steps 1—5, but with the basting thread down centre back. 6. Cut off seam allowance on right front. 7. Turn in one long raw edge of centre front panel $\frac{1}{2}$ in.; press. 8. Place this folded edge parallel to the right centre front edge and $\frac{3}{8}$ in. from it; baste in position. 9. Stitch $\frac{1}{4}$ in. from the folded edge. 10. Turn in remaining long raw edge $\frac{1}{2}$ in. and slipstitch it to wrong side of blouse, to machine stitching. Press. 11. Run a line of machine stitching $\frac{1}{4}$ in. from other edge of centre front panel. 12. Apply button stand as in Blouse 2. 13. Embroider one small motif at each end of one collar section. 14. Place collar sections, right sides together, edges even and stitch round outside edge leaving neck edges open. 15. Trim seam to $\frac{1}{4}$ in. turn collar to right side and press. 16. Baste edge of under collar to neck edge, right sides together, raw edges even and centre backs matching. Stitch along fitting line. 17. Turn in remaining raw edge of collar $\frac{1}{2}$ in. and slipstitch in position to the machine stitching. Continue with Steps 6 and 7 of Blouse 1. 18. Sew one press stud, hook and buttonhole loop at neck opening. 19. Sew remaining press studs down centre front at intervals of $2\frac{3}{8}$ in. 20. Embroider motifs on fabric circles and cover button moulds as in Blouse 3. 21. Sew buttons in position on top of press studs.

Bulletin No. 17A gives full instructions for making gay beachwear for the holidays.