



Thank you

for downloading this pdf file from [Knitting-and.com](https://www.knitting-and.com)!

Your visits have helped keep Knitting-and.com online, providing free crafts and recipes since 1996.

There are hundreds of free patterns and crafts available and more added all the time!

Note: The pink watermark on the following pages will not show if you print this file.

<https://www.knitting-and.com>

... And so to **SEW**



<https://www.knitting-and.com>

BULLETIN 15a • Making and Sewing your own Party Dresses.

Making and Sewing your own



Party Dresses

SEAM FINISHES

Two methods of finishing seams: (1) Allow $\frac{1}{2}$ in. seam allowance and overcast all raw edges. (2) Allow $\frac{3}{4}$ in. seam allowance and turn in raw edges and machine stitch.

Waist Seam:—Press seam open, then press two raw edges upwards. Run a second row of machine stitching $\frac{1}{4}$ in. above seam, through both thicknesses. Overcast raw edges.

THE HOLIDAYS ARE OVER. Jean and Elizabeth have put away all the tangible associations of their days at the seaside—have repaired, laundered and stored their summer dresses—and now look forward to winter. Look forward to winter—of course they do—because summer is the time for casual clothes and winter is the season when fashion comes into its own, with the elegance of rich, colourful fabrics.

Jean and Elizabeth are two wise girls and accept the winter evenings as a challenge—a challenge to make new clothes to fill in the gaps in their wardrobes—to create new models that will win compliments for them throughout the year and also give them real personal satisfaction. They've made the basic garments with the help of previous sewing bulletins—now they are ready to start a year's sewing project—a party dress, a cap sleeve blouse and some new clothes for the holidays. Jean has many Christmas parties and dances in view, whilst Elizabeth has already received an invitation to a birthday party. Choice of style and fabric will be their first consideration. They have studied Bulletin No. 8A and are now aware of the styles that are most flattering, and also right, for their age. They each want a dress that is simple, with good lines and yet one that is adaptable to see them through a few years, if need be. Choice of fabric is most important—they avoid very shiny fabrics, but choose fabrics such as chintz, dupion, dull-surfaced poplin, or taffeta. Elizabeth has selected a simple style with a plain bodice and a full gathered skirt to be made in glazed chintz—easy and quick to sew. Jean's dress has a simple bodice, cut on the bias so that the stripes form a chevron pattern. The skirt has six pieces and is slightly gathered at the waist.

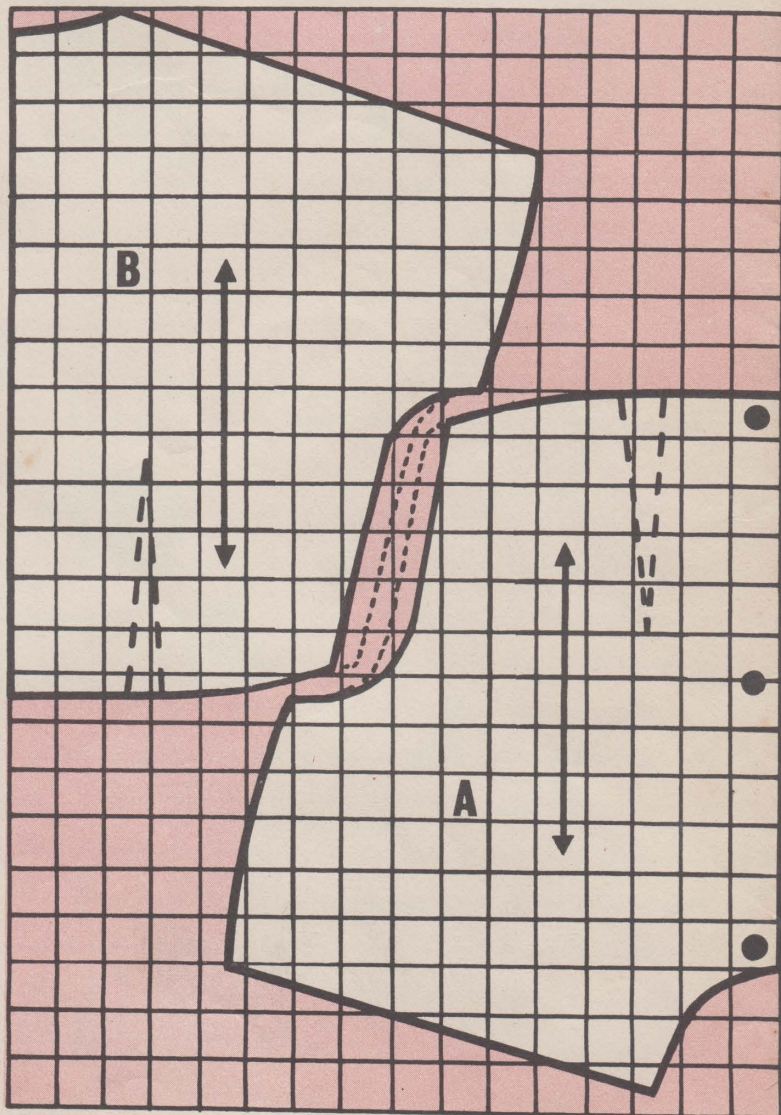


DIAGRAM 1

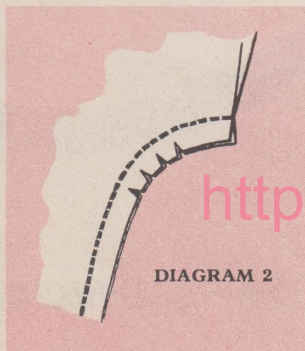


DIAGRAM 2

<https://www.knitting-and.com>

Clip only to $\frac{1}{4}$ in. from stitching line. On a shallow curve clip at approximately $\frac{3}{4}$ in. intervals, on a well defined curve at $\frac{1}{2}$ in. intervals or less.



STRIPED
CHINTZ
DRESS



DRESS WITH
CONTRAST
BINDING AND
SASH



STRIPED
TAFFETA
DRESS



DRESS WITH
DOUBLE
NET YOKE

STRIPED CHINTZ DRESS

Size:—Bust—30 in. or 32 in. ; Waist—24 in. or 26 in.

Length of Skirt:—25 in. or 26 in. (with 3 in. hem).

Materials:—3 yds. Chintz, 36 in. wide. 3 yds. narrow white Cord. 6 Press Studs. 1 Hook and Eye. 1 Small Chintz covered Button. 1 Reel Mercerised Sewing Cotton No. 40 to match. 1 Sharps Needle No. 7. 1 Machine Needle No. 14.

Patterns:—Solid lines of pattern mark 30 in. bust size; dotted lines mark 32 in. bust size. Make these from Diagram 1—1 sq. = 1 in. (as described in Bulletin No. 2A). Solid spots mark edge to be laid on folded edge of fabric. Arrows mark straight grain. Broken lines mark darts.

Cutting Directions:—Allow $\frac{1}{2}$ in. or $\frac{3}{4}$ in. for seams on all pattern pieces, depending upon method used to finish seams.

Pattern A—Front Bodice—Cut 1 piece. **Pattern B—Back Bodice**—Cut 2 pieces. **Skirt**—Cut 2 pieces 30 in. x 29 in. (or 30 in. for extra length). Cut the following bias strips, piecing as necessary: 1 strip 16 in. x $1\frac{1}{4}$ in. for neck binding; 2 strips 13 in. x $1\frac{1}{4}$ in. for sleeve bindings; 1 strip 21 in. x 2 in. for continuous opening; 2 strips 22 in. x 1 in. for neck rouleaux; 2 strips 29 in. x 1 in. for sleeve rouleaux. Cut 2 pieces of cord 22 in. long for neck rouleaux and 2 pieces 29 in. long for sleeve rouleaux.

Sewing Directions:—(1) Tailor tack round all pattern pieces and darts to mark stitching lines. Run a basting thread down centre front of bodice. (2) Baste and machine stitch darts on front and back bodice. Press towards centre. (3) Pin and baste side seams, shoulder seams and centre back seam (leaving a 5 in. opening at top of centre back seam and a 5 in. opening at the waist end of left side seam). (4) Fit top of dress making necessary alterations. (5) Machine stitch seams and clip seams at underarm curves (see Diagram 2), to $\frac{1}{4}$ in. from stitching. Press seams, finishing all raw edges, except neck, waist and sleeve edges. (6) Join short ends of sleeve bindings similar to a bias strip. Pin and baste neck and sleeve bindings round neck and sleeves, right sides together, edges even. Machine stitch round fitting line and trim seam to $\frac{1}{4}$ in. Turn binding to wrong side on stitching line. Turn in raw edge of binding and slipstitch to bodice invisibly. (7) Fold neck and sleeve rouleaux strips in half lengthwise, right sides together, raw edges even. Baste and machine stitch $\frac{1}{4}$ in. from the fold. Trim seams to $\frac{1}{8}$ in. and pull through to right side. With a bodkin draw corresponding cords through each rouleau. Finish ends neatly with slipstitching. (Note: as the end of one of the neck rouleaux forms a button loop at centre back, leave $1\frac{1}{4}$ in. of this rouleau free of cord.) (8) Slipstitch short rouleaux round outside sleeve edges leaving 8 in. ends at the shoulder seams for bows. (9) Slipstitch neck rouleaux in the same way, having the bow at centre front and making a small loop for the button at the top of back opening. Tie all bows and sew button in position. (10) Mark centre of each skirt section then place them right sides together,

baste and machine stitch the 29 in. side seams, leaving a 4½ in. opening at the top of the left side seam. Press seams open and finish raw edges. (11) Run 2 rows of gathering stitches (one ¼ in. above the fitting line, the other ¼ in. below) round skirt, starting and finishing at the opening. It is more simple to control the gathers, if the lines of gathering stitches are split up into four sections. (12) Pull up and space gathers evenly, to fit waistline of bodice. Pin and baste bodice to skirt, right sides together. Fit dress and make any necessary alterations. Machine stitch waist seam and press open. Finish raw edges. Remove the lower gathering thread. (13) Make a narrow continuous opening at left side. Sew 3 press studs above and 3 below the waistline, and a hook and eye at the waistline. (14) Measure hem and turn up to required length; turn in raw edge and slipstitch invisibly. (15) Press well.

STRIPED TAFFETA DRESS

Size:—Bust—32 in. or 34 in.; Waist—24 in. or 26 in.

Length of Skirt:—35 in. (or less).

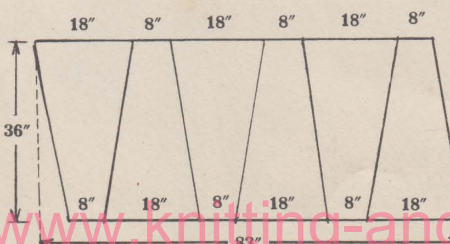
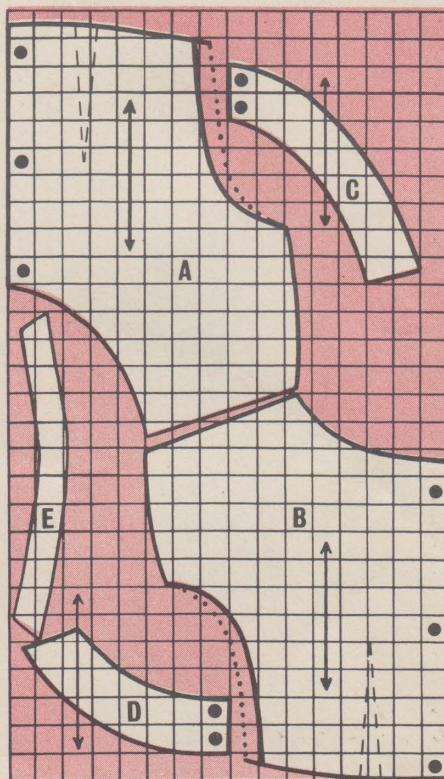
Materials:—4 yds. Taffeta, 36 in. wide. 1 Zip Fastener, 10 in. long to match. 1 Card Bias Binding to match. 1 Reel Mercerised Sewing Cotton No. 40 to match. 1 Sharps Needle No. 8. 1 Machine Needle No. 14.
Patterns:—Solid lines on pattern mark 32 in. bust size; dotted lines mark 34 in. bust size. Make these from Diagram 3—1 sq.=1 in. (as described in Bulletin No. 2A). Solid spots mark edge to be laid on folded edge of fabric, unless otherwise stated. Arrows mark straight grain. Broken lines mark darts. *As a feature has been made of the striped fabric, the bodice is cut in such a way that the stripes will form a chevron pattern at the centre front and the centre back. Owing to this, the straight grain arrows and solid spots must be ignored and the bodice sections are cut on the bias. Care should be taken, when placing and cutting, that stripes will match accurately. If plain fabric is used, lay centre front and centre back bodice to a fold and use straight grain arrows.*

Cutting Directions:—Allow ½ in. or ¾ in. for seams on all pattern pieces, depending upon method used to finish seams. *Front Bodice—Pattern A*—Cut two pieces. *Back Bodice—Pattern B*—Cut two pieces. *Skirt*—Cut six pieces as shown in cutting layout. (Diagram 4). *Collar (front)—Pattern C*—Cut two pieces. *Collar (back)—Pattern D*—Cut two pieces. *Cuffs—Pattern E*—Cut four pieces.

Sewing Directions:—(1) Tailor tack round all pattern pieces and darts to mark stitching lines. (2) Join front and back bodice sections at centre front and centre back seams (matching stripes accurately). (3) Pin and baste darts on front and back bodice. (4) Baste shoulder and side seams, leaving a 5½ in. opening on left side seam, from waist end, for zip fastener. (5) Fit top of dress, making necessary alterations. (6) Machine stitch darts and press towards centre. Machine stitch shoulder and side seams. Clip seams at underarm curves

to ¼ in. from stitching line (see Diagram 2). Press all seams open and finish. (7) Machine stitch shoulder seams on one front and one back collar section. Repeat with remaining collar sections. Trim seams to ¼ in. and press open. Place collar sections, right sides together and stitch round outer curved edge; trim seam to ¼ in., press and turn to right side. Baste outer curved edge and press. Lay collar in position on right side of dress, raw neck edges even. Place a piece of bias binding with fold to fitting line. Machine stitch along fitting line through all thicknesses. Trim seam to ¼ in. Turn bias binding on fitting line to wrong side of bodice and slipstitch. (8) Join short ends of all cuff sections. Join cuff sections together and attach to dress in same way as collar. (9) Baste skirt sections together, leaving 5½ in. open at the top of one seam, which will be the left side seam. Fit and adjust skirt if required. (Each seam must be altered in the same way, if any adjustment with regard to width is necessary.) (10) Machine stitch side seams; press seams open and finish. Run two rows of gathering stitches round skirt (one ¼ in. above the fitting line, the other ¼ in.

DIAGRAM 3



below), starting and finishing at opening. It is more simple to control the gathers, if the lines of gathering stitches are split up into four sections. (11) Pull up gathers to fit waist edge of bodice. Space gathers evenly all round; pin and baste bodice to skirt. Fit, making any necessary alterations. Machine stitch waist seam; press seam open and finish. Remove lower gathering thread. (12) Insert zip fastener at side seam. (13) Turn up hem with bias binding or turn in raw edge and slipstitch, depending on selected fabric. (14) Press garment thoroughly.

DRESS WITH CONTRAST BINDING AND SASH

Here is an adaptation of Elizabeth's dress, with a note of contrast fabric at the neckline, armholes and waist. Two 1½ in. tucks add further interest and are also useful for lengthening. When cutting, allow 6 in. extra to the skirt length. The sleeves and neckline are bound on the fitting line with bias strips of contrasting fabric, and the sash is made from one piece of fabric 36 in. x 6 in. and two pieces 18 in. x 6 in. Join one short strip to each end of the long strip (to avoid a centre seam). Narrow hem all raw edges. Belt carriers may be made with Buttonhole Bars.

DRESS WITH DOUBLE NET YOKE

Plain fabric has been used as an alternative to striped taffeta, and interest is added with a yoke of matching net. Diagram 5 gives the pattern for the yoke, cut from double fabric (1 square=1 in.) and ½ yd. Net, 36 in. wide, will be required. The back bodice is cut in two pieces and has a centre back seam with a 4 in. opening at the top. The bodice is joined to the yoke with a top stitched seam and the neck edge, armhole edges and back opening are bound on the fitting line with self-coloured bias strips. The back opening is closed at the neck with a small covered button and Buttonhole Loop.

DIAGRAM 5

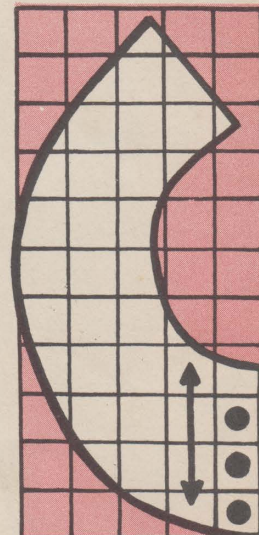


DIAGRAM 4