



Thank you

for downloading this pdf file from [knitting-and.com](https://www.knitting-and.com)!

Your visits have helped keep Knitting-and.com online, providing free crafts and recipes since 1996.

There are hundreds of free patterns and crafts available and more added all the time!

Note: The pink watermark on the following pages will not show if you print this file.

<https://www.knitting-and.com>



And so

to sew

NDS

<https://www.knitting-and.com/>

This simple w

THIS SMART well-fitting woollen dress would be an excellent addition to your wardrobe. You will find this simple style a perfect background for collars and cuffs and decorative belts—in fact, the character of the dress can be continually changed by the use of interesting accessories.

Having selected but not purchased your fabric, choose a suitable pattern. This is important. A pattern can be found to suit any fabric, but it is dangerous to buy your pattern first and then to search for the correct fabric. When choosing fabric and pattern note the following points:—

Woollen Fabric: (1) Buy a good quality, making sure that it has a firm, close weave.

(2) Fine flannels, gaberdines, dress tweeds and worsteds, are for simple tailored styles.

(3) Fine wool crepes are suitable for draped or gathered styles.

Suitable Pattern for Woollen Fabric: (1) Full length or three-quarter length sleeves are best—wide sleeves tend to look bulky.

(2) Skirt fulness over the hipline is best controlled by pleats; no gathering unless the fabric is very fine.

(3) Avoid circular skirts or full flares if your fabric is loosely woven, otherwise the hemline will droop.

(4) A simple semi-tailored style is always safe.

This dress can be worn on many occasions—the crisp white tailored collar and cuffs make it trim for your first interview—and the frilled bib collar (Bulletin No. 2a) gives it a softer effect.

Pressing: Before you start to sew, have your ironing board, iron and pressing cloth handy. When using woollen fabric press your work at every stage. Do this by placing a damp pressing cloth on the wrong side of the seam or dart to be pressed—use a moderately hot iron.

This is a basic dress, simple to make if a reliable paper pattern is bought similar to our model. There are 6 pattern pieces: Front Bodice—A; Back Bodice—B; Front Skirt—C; Back Skirt—D; Sleeve—E; Belt—F. Buy your pattern by bust measurement and alter to correspond with your other measurements (for pattern alteration, see Bulletins Nos. 4a and 5a). Refer to your pattern instruction sheet for various perforations and markings on your paper pattern. Attention must be paid to the cutting layout. The following instructions explain the complete making up of a dress to this style.

DRESS

Materials: Woollen Fabric 54 in. wide (amount quoted on pattern). 1 lightweight self-locking "back opening" Slide Fastener 20 in. long, to match. Pure Silk 100/3 or 6 cord Sewing Cotton No. 40 to match fabric. 1 Pair Shoulder Pads. 1 Card Nainsook Bias Binding to match fabric. 1 Hook and Eye. 1 "Sharps" Needle No. 7. 1 Machine Needle No. 16.

Cutting Directions: Before cutting, shrink fabric (see Bulletin No. 7a). Refer to pattern sheet for seam allowances on pattern. Pattern A—Front Bodice—Cut 1 piece, with centre front on fold. Pattern B—Back Bodice—Cut 2 pieces. Pattern C—Front Skirt—Cut 1 piece, with centre front on fold. Pattern D—Back Skirt—Cut 2 pieces. Pattern E—Sleeve—Cut 2 pieces. Pattern F—Belt—Cut 1 piece.

Sewing Directions: (1) Run a basting thread down centre of Front Bodice and centre of Front Skirt.

(2) Mark pleats and darts with tailor tacking in contrasting thread. Tailor tack in perforations round all pattern pieces.

(3) Pin and baste darts on Front and Back Bodice sections.

(4) Baste shoulder seams and side seams.

(5) Fit Bodice making any necessary alterations.

(6) Machine stitch darts and press them towards centre at back and front.

(7) Machine stitch shoulder seams and side seams and finish off with overcasting.

(8) The neck can be finished with a facing or with bias binding."

(9) Baste sleeve seams and check sleeve width. Alter if necessary, then machine stitch and finish off with overcasting.

(10) Insert sleeves into armholes.

(11) Pin and baste darts, pleats and seams on Skirt sections, leaving centre back seam open 5 in. from the top. Baste Bodice to Skirt, keeping darts and pleats in alignment.

(12) Fit and make any necessary alterations at hipline and waist-



Front and back view, Bib Collar and Cuff Set.

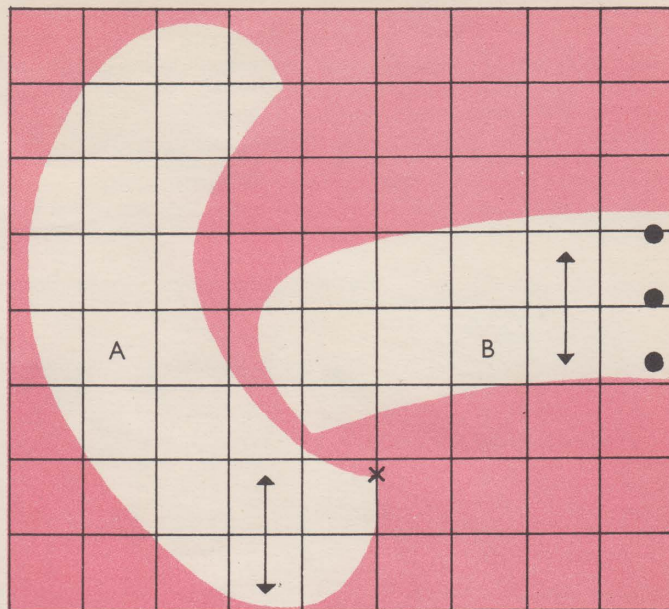


<https://www.knittingand.com>

so smart with

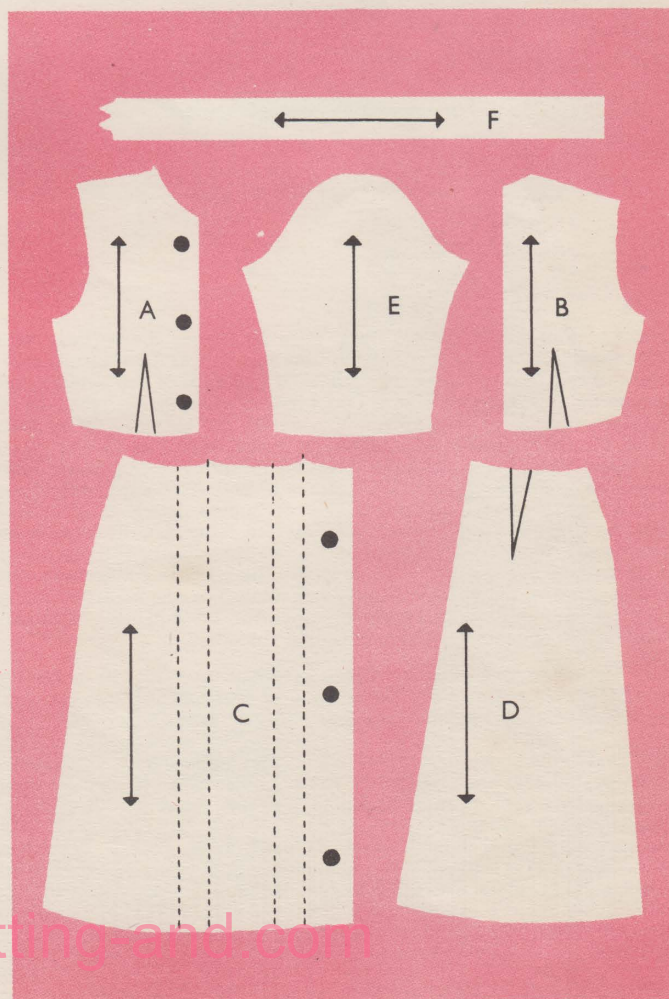
Well fitting Dress.,

The frilled bib collar (Bulletin No. 2a)



COLLAR AND CUFF PATTERN PIECES

DRESS PATTERN PIECES



line. Separate Bodice from Skirt by removing the basting threads.

(13) Press and machine stitch pleats to required length. Work a tiny Arrowhead at top of each pleat.

(14) Machine stitch darts, centre back seam and side seams. Press and finish with overcasting.

(15) Baste Bodice to Skirt, with darts and pleats in alignment, machine stitch. Press seams open, then bind edges together with bias binding.

(16) Insert slide fastener (See Bulletin No. 7a) at centre back opening. Sew hook and eye at neckline.

(17) Allow dress to hang on a hanger for 2 days before taking final measurement for hemline.

(18) Pin shoulder pads in position and stitch in place. Fix length of sleeve and finish with bias binding.

(19) Measure hem length and finish with overcast hem.⁵⁴

(20) Make belt⁵⁵ and carriers.⁵⁶ Press dress carefully on wrong side.

WHITE TAILORED COLLAR AND CUFFS

Materials: 1/3 yd. of white piqué, 36 in. wide. 1 Card White Nain-sook Bias Binding. 1 Reel White 6 Cord Sewing Cotton No. 50. 1 "Betweens" Needle No. 7. 1 Machine Needle No. 14.

Patterns: Make these from diagram 1 sq. = 1 in. Solid spots mark

Contd. overleaf

collars and cuffs

edge to be laid on fold of fabric. Arrows mark straight grain of fabric. X marks centre front of each half collar.

Cutting Directions: Allow $\frac{1}{2}$ in. for turnings round patterns when cutting. Pattern A—Collar—Cut 4 pieces by pattern from fabric. Pattern B—Cuff—Cut 4 pieces by pattern from fabric.

Sewing Directions: (1) Tailor tack round all pattern pieces.

(2) Lay two collar sections (A) right sides together, edges even. Pin, baste and machine stitch round outer curved edge. Trim seam

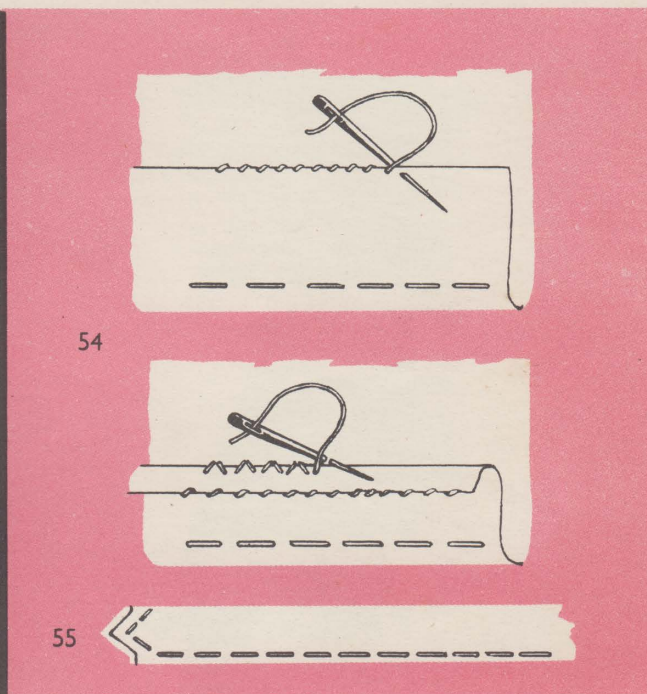
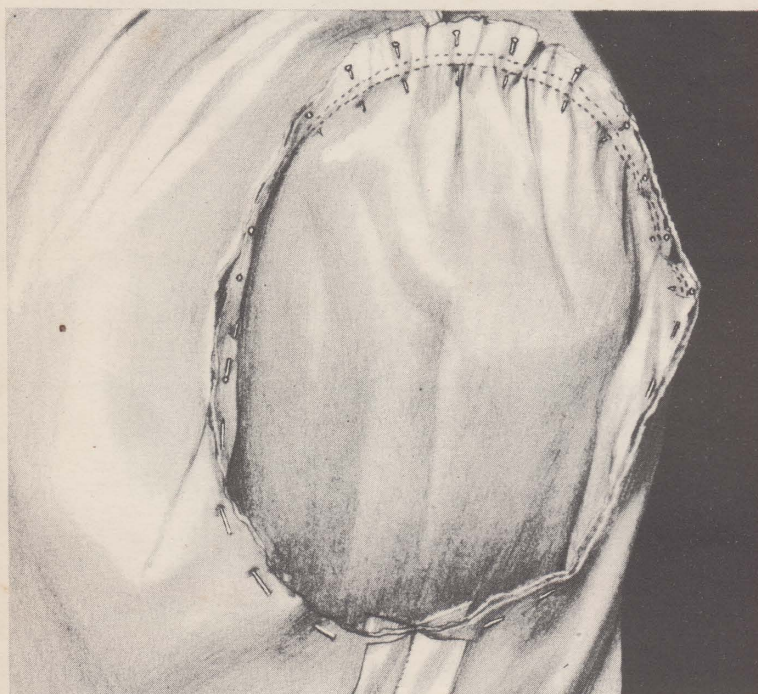
to $\frac{1}{4}$ in. and turn to right side. Run a basting thread round the outside edge and press flat.

(3) This is half of the collar. Make up the other half collar in the same way.

(4) Lay two half collars flat together, so that they overlap $\frac{1}{4}$ in. at X, and baste. Bind round the raw edge with bias binding.

(5) Make up the cuffs in the same way as for the half collar and finish raw edges with bias binding.

Our next bulletin gives complete instructions for making pyjamas and a frilly nightdress.



TECHNIQUES

No. 52. Finishing a Shaped Neck Edge or Shaped Sleeve Edge with Bias Binding. Cut a strip of bias binding 1 in. longer than the measurement of the neck or sleeve edge. Unfold one edge of the binding and pin round neck or sleeve edge (right side of binding to right side of fabric) with the binding fold line lying on the garment fitting line. Ease the binding slightly so that the outer edge will lie flat when complete. Baste and machine stitch all round on fitting line. Trim seam to $\frac{1}{4}$ in. Remove basting threads and snip seam allowance almost to stitching line at intervals of approximately 1 in. Turn binding over to wrong side of garment and baste flat. If there is an opening, turn under each end of binding in line with the corresponding edge of the opening and slipstitch. If the edge is continuous, cut binding to final measurement plus seam allowance and before stitching to garment, join binding diagonally on grain. Press lightly. Slipstitch binding into position. Remove basting threads.

No. 53. Inserting a Woollen Sleeve. (1) Run two lines of gathering threads round top of each sleeve between the notches, one line just beyond the fitting line and the other $\frac{1}{4}$ in. nearer the raw edge.

(2) Insert each sleeve into the corresponding armhole, right sides together, notches matching. Pin round under-arm between notches, with notches and seams matching. Pull up gathering threads, so that sleeves fit armholes exactly. Finish off threads securely. Adjust gathers evenly and pin sleeves into position all round. (The pins should be put in vertically round top of sleeve, see diagram). With small stitches, baste sleeves securely. Pin shoulder pads in position, having the centre of the pad $\frac{1}{4}$ in. to the front of the centre shoulder seam line and protruding $\frac{1}{4}$ in. beyond the armhole seamline.

(3) Fit sleeves. Check shoulder widths, the accuracy of armhole

lines, the even spacing of the gathers and the straight hang of the sleeves. Adjust if necessary. Remove pads.

(4) Place top of each sleeve and shoulder over a rounded pad and shrink away all extra fulness, on the wrong side, using a damp cloth and a moderately hot iron.

(5) Machine stitch along basting lines. Press seams open to give clearly defined lines on right side. Finish sleeves by binding the two raw edges together with bias binding.

No. 54. Overcast Hem. Turn up hem along fitting line. Press lightly on wrong side. Trim evenly to required width and overcast raw edge. Turn back overcast edge $\frac{1}{4}$ in., baste. Baste hem to dress and using small invisible catch stitches sew through fold to dress (see diagram). When sewing is complete, remove all basting threads and press hem flat.

No. 55. Belt. Cut a strip of fabric the length of the waist measurement plus 8 in. by double the width required plus 1 in. Fold in half lengthwise and cut one end as shown in diagram. Cut a strip of canvas for stiffening, length of belt by finished width and with one end pointed. With wrong sides together and edges even, fold belt in half lengthwise. Turn in all raw edges $\frac{1}{4}$ in. and press lightly. Place canvas in position inside belt and baste along all edges. Top stitch all round belt $\frac{1}{4}$ in. from edge. Place straight end over middle bar of buckle, stitch in position. If a prong buckle is used, make eyelet holes with a stiletto and buttonhole stitch them.

No. 56. Belt Carriers. Cut two straight strips 1 in. wide by width of belt, plus 1 in. Fold in half lengthwise, right sides together. Make a $\frac{1}{4}$ in. seam on long raw edges and turn to right side. Turn in $\frac{1}{4}$ in. at each end, slipstitch, and attach firmly to dress at side seams on each side of waist line.