



Thank you

for downloading this pdf file from [knitting-and.com](https://www.knitting-and.com)!

Your visits have helped keep Knitting-and.com online, providing free crafts and recipes since 1996.

There are hundreds of free patterns and crafts available and more added all the time!

Note: The pink watermark on the following pages will not show if you print this file.

<https://www.knitting-and.com>

... AND SO TO

EMBROIDER



BULLETIN 17 B ...

DECORATING WITH
MACHINE STITCHING

<https://www.knitting-and.com>

DECORATING WITH Machine Stitching

IN PREVIOUS ISSUES of these bulletins we have concentrated mainly upon ways in which hand embroidery can be used to enrich household furnishings and dress accessories, although from time to time we have illustrated machine stitching used as a decoration, as in the case of the samplers in Bulletin 8B and the Bulletin holder in 15B. In this issue we deal more fully with the way in which the sewing machine, normally used for the purpose of construction, can be the means of creating attractive and individual decorations for the clothes we make. Such decoration is in keeping with the times in which we live and indicates another use for the sewing machine which we now accept as an essential part of our everyday life.

It is interesting to know that it has been possible to sew by machine for only a little over a hundred years, for it was not until the middle of the 19th Century that sewing machines—developed by Isaac Singer—were coming into general use. These must have been a great boon to the Victorian woman, faced with the task of making dresses with voluminous skirts as well as many and often elaborately tucked petticoats. To-day our clothes are simpler, but we also are glad of the neatness, speed and precision which the sewing machine affords. Present day machines can be worked by hand, by foot treadle or by electricity, and there are attachments for special purposes, such as binding, tucking or quilting. Highly specialised machines have been invented for commercial use to serve many purposes, for example, neatening the edges of seams by overlocking, making buttonholes and even for sewing on buttons.

The decorations on the attractive beach clothes and accessories described and illustrated in this Bulletin were carried out on an ordinary domestic sewing machine in plain and cable machine stitching.



<https://www.knitting-and.com>

★ Bulletin r8B will show you how to make decorative toy horses.



GENERAL INSTRUCTIONS

Plain stitching is worked with the same thickness of mercerised sewing cotton threaded up in the machine and wound on the spool. 'And So to Sew' Nos. 2A and 3A give diagrams and instructions for adjusting your machine to give a perfect stitch.

Cable stitching is worked with mercerised sewing cotton threaded in the machine and a thick embroidery cotton wound on the spool. *It is necessary to stitch on the wrong side of the fabric, so that the thick thread lies on the right side.* To work in this way, lengthen the machine stitch to its fullest extent. The manual which describes your own sewing machine will tell you how to do this, and it will also tell you how to adjust the tension if this should be necessary for your particular machine. Test the stitch on a scrap of fabric.

Preparing the Design

Straight Lines : Baste a line a short distance away from the required final position of the machine stitching, letting this distance equal the

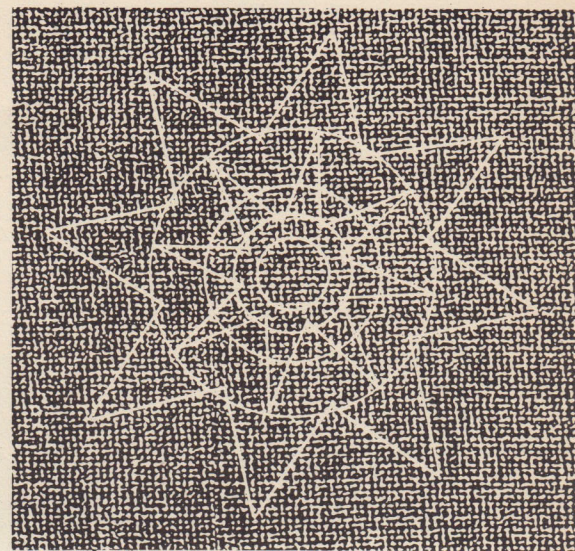
width of the presser foot of the machine. Use the basted line as a guide for the stitching. Close lines of stitching may be regulated by following the first row and subsequent rows. Widely spaced rows require separate lines of basting.

Zig-Zag Lines : Mark upper and lower points with a pencil dot. When stitching, stop the machine at a pencil dot. Raise the presser foot. Turn the fabric in the new direction. Lower the presser foot and continue stitching.

Motifs : Trace lines of design on thin tracing paper. Baste very securely in position on the fabric. Stitch. Tear paper carefully away. *Remember to baste the design on the wrong side of the fabric if the stitching is to be carried out with thick embroidery thread in the spool of the machine.*

Cotton Skirt with Matching Blouse and Accessories

The matching skirt and blouse are made in firm blue cotton with a fine white woven stripe. The hem and waistband of the skirt are decorated



with white linen tape in two widths and with cable stitching. This stitching is carried out with thick white soft embroidery cotton in the spool of the machine and blue mercerised sewing cotton No. 40 for the top threading. The white tape is stitched on with plain machine stitching using the mercerised sewing cotton No. 40 in blue. The neck and sleeve edges of the Magyar blouse are finished with white bias binding and a line of cable stitching. The little stitched bow at the neck is an attractive addition, and white linen buttons sewn on with blue button-hole bars trim the front opening. The skirt is a simple one, the generous fullness being gathered evenly into the waistband. Instructions for making a cotton skirt are given in Bulletin 3A. The Magyar blouse can be adapted from the patterns given in Bulletin 16A. The blouse and skirt may be worn with or without the decorative belt and pockets.

The gay red bag is trimmed with plain machine stitching, cable stitching, and white linen buttons. It is made from two pieces of felt measuring 9 in. x 11 in. and a strip of felt measuring 31 in. x 2 in. forms a gusset. The handles each measure 31 in. x 2 in. and these button on to the top of the bag. The bag is lined with fabric to match the blouse and skirt.

The belt is 2 in. wide and the length is equal to your waist measurement with an additional 2 in. for the overlap. The pockets, which button on to the belt, are 4½ in. wide and 6 in. deep and the shape of these can be varied in many different ways. Both the bag and belt are decorated in white with plain and cable stitching. For the plain stitching, mercerised sewing cotton No. 40 is used and for the cable stitching the same sewing cotton is threaded up in the machine and soft embroidery cotton wound on the spool.

Linen Skirt and Accessories

The skirt, sandals and beach bag are made from a dull gold coloured linen and the decoration is carried out in plain machine stitching, using No. 40 mercerised sewing cotton and cable stitching with soft embroidery cotton on the spool. Black linen tape gives additional interest. The skirt is worn with a black poplin blouse, and the making of each is described in Bulletin 17A. The stole is made from a fine, washable woollen fabric. The star motifs which decorate this are worked in plain stitching in No. 40 mercerised sewing cotton, and the borders in plain and cable stitching.

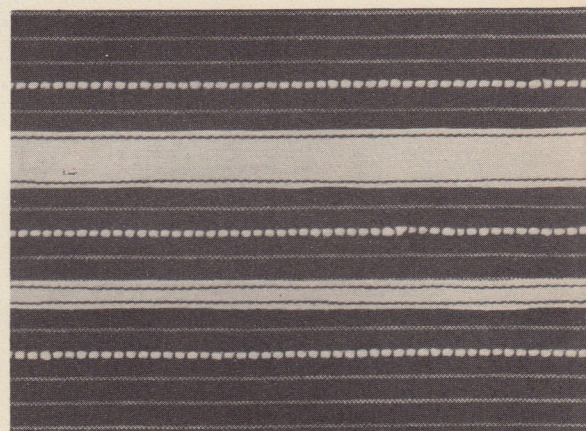
Beach Bag

The beach bag is similar in construction to the sewing bag illustrated in Bulletin 7B, but it has an oval base measuring 10 in. x 8 in. and the bag section is 13 in. deep. The wide strap handle is made in two sections buttoning together at the centre and tapering a little in width towards the ends which are attached to the bag. The top of the bag is drawn up by a cord, which passes under the handles and through bone rings covered with Buttonhole Stitch. The small pom poms which form part of the decoration and the large ones which trim the ends of the cords are amusing additions. The bag is lined with black poplin. Plan the bag in paper and pin the sections together so that any adjustments can be made

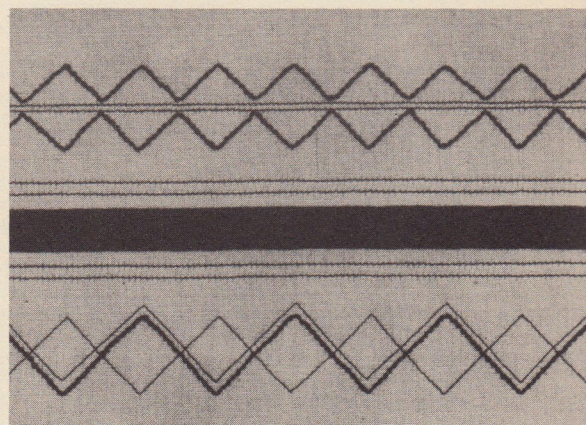
before cutting the fabric. All the decorative machine stitching is worked before making up the bag. It is a good idea to make a separate envelope-shaped holder from plastic material, into which you can roll your bathing costume before putting it into the beach bag.

Sandals

The straps and heel sections of the sandals are attached to a sole made from coiled clothes rope, and the decoration is carried out in plain and cable machine stitching to match the bag. The inner soles are made from three layers of soft felt covered with black poplin quilted in a diamond pattern. The sandals are kept in position with a cord which ties at the ankles.



Close-up of decoration on blue and white cotton fabric. The linen tape is stitched on with mercerised sewing cotton No. 40 in blue and this is also used with white soft embroidery cotton on the spool for the cable stitching. For the carrying out of this decoration a machine needle No. 16 was fitted.



Close-up of decoration used on the hem of the linen skirt. The plain stitching is carried out with mercerised sewing cotton No. 40. The same thread is used for the cable stitching with black soft embroidery cotton on the spool. For both plain and cable stitching a machine needle No. 16 was used.

<https://www.knitting-and-crafts.com>