



# Thank you

for downloading this pdf file from [knitting-and.com](http://knitting-and.com)!

Your visits have helped keep Knitting-and.com online, providing free crafts and recipes since 1996.

There are hundreds of free patterns and crafts available and more added all the time!

**Note:** The pink watermark on the following pages will not show if you print this file.

# Beautiful Rugs

*Easy-to-make*

**TUFTED  
CROCHETED  
BRAIDED**

<https://www.knitting-and.com>

# IT'S SO EASY to make a Tufted Rug with STAR BRAND RUG YARNS and STAR RUG FOUNDATIONS

All STAR RUG FOUNDATIONS are stamped with color names which indicate where each individual tuft is to be sewn. Size of each foundation is 24 x 36 inches.

USING . . .

12 STRANDS OF  
**AUNT LYDIA HEAVY  
RUG YARN**  
ARTICLE 235



OR . . .

20 STRANDS OF  
**STAR RUG YARN**  
ARTICLE 44



OR . . .

26 STRANDS OF  
**STAR BLEND YARN**  
ARTICLE 75



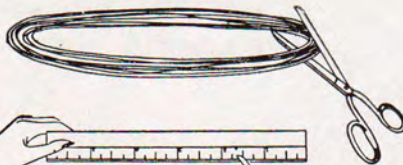
and AUNT LYDIA'S



CARPET & BUTTON THREAD

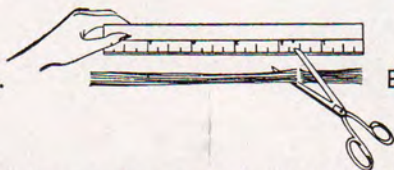
To make the tufts:

Open a skein to full length,



and cut through one end.

Cut into 1 1/2 inch lengths.



Each 1 1/2 inch length will make a tuft. After the

yarn is cut in tuft size, insert a needle threaded with AUNT LYDIA Carpet and Button Thread in one of the

stamped dots near the center of the foundation, fastening firmly.



Place a

tuft over the thread and sew center of the tuft to the foundation securely, using two or three stitches.



© 1950 Printed in U.S.A.

*The American Thread Co. Inc.* 260 WEST BROADWAY, NEW YORK 13, N. Y.

# Modern Cross Hatch

A Basket Weave Rug in brilliant Yellows, Greens and Oranges. Join 18 of these together for a room size rug 9 feet wide by 12 feet long. Nine sewn together will make a 6' x 9' rug. See Page 4 for Materials Required.



<https://www.knitting-and.com>

# Modern Cross Hatch Motif No. 522 . . . Materials Required: 1 STAR Rug Foundation No. 522

(Illustrated on page 3)

## STAR Rug Yarn

### Article 44

- 4 skeins Rust No. 28
- 4 skeins Orange No. 25
- 4 skeins Lt. Yellow No. 22A
- 4 skeins Lt. Green No. 37
- 4 skeins Dk. Green No. 40

## AUNT LYDIA Heavy Rug Yarn

### Article 235

- 2 skeins Rust No. 227
- 2 skeins Orange No. 226
- 2 skeins Lt. Yellow No. 221
- 2 skeins Lt. Green No. 237
- 2 skeins Dk. Green No. 239

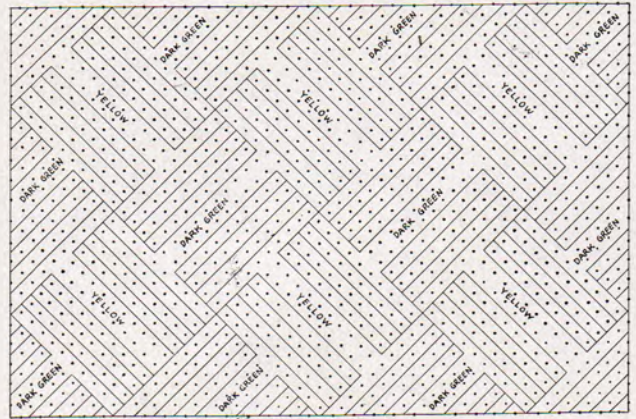
## STAR Blend Yarn

### Article 75

- 3 skeins Brown No. 43
- 3 skeins Peach No. 48
- 3 skeins Lt. Yellow No. 22A
- 3 skeins Lt. Green No. 37
- 3 skeins Dk. Green No. 40

and 3 Spools AUNT LYDIA Carpet and Button Thread

After you have followed the directions on page two for making tufts, you may begin with confidence the Modern Cross Hatch shown on page 3. With AUNT LYDIA Carpet and Button Thread just sew a colored tuft of one of our lovely yarns onto each dot as indicated. Here is a good staple design that can be made to harmonize or contrast with your favorite color scheme. Four of these sewn together make a handsome, large rug 48" x 72".



COLORS ARE INDICATED ON EACH RUG FOUNDATION

# Maple Leaf No. 521 . . . Materials Required: 1 STAR Rug Foundation No. 521

## STAR Rug Yarn

### Article 44

- 11 skeins Dk. Green No. 40
- 12 skeins Cream No. 3
- or
- 11 skeins Lt. Yellow No. 22A
- 12 skeins Gray No. 60
- or
- 11 skeins Pink No. 31
- 12 skeins Dk. Rose No. 35

## AUNT LYDIA Heavy Rug Yarn

### Article 235

- 7 skeins Dk. Green No. 239
- 7 skeins Cream No. 23
- or
- 7 skeins Lt. Yellow No. 221
- 7 skeins Gray No. 259
- or
- 7 skeins Pink No. 231
- 7 skeins Dk. Rose No. 235

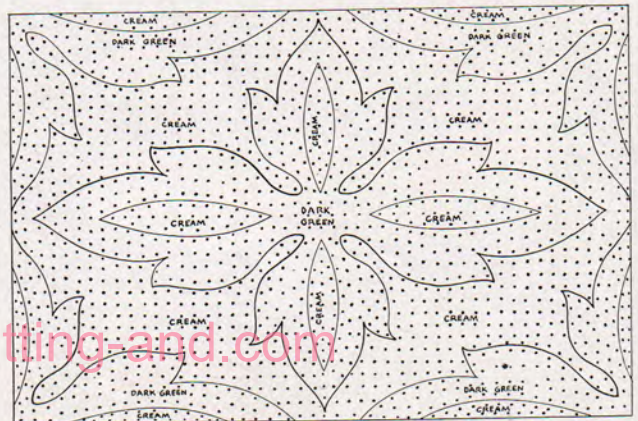
## STAR Blend Yarn

### Article 75

- 10 skeins Dk. Green No. 40
- 11 skeins Cream No. 3
- or
- 10 skeins Lt. Yellow No. 22A
- 11 skeins Gray No. 60
- or
- 10 skeins Pink No. 31
- 11 skeins Old Rose No. 34

Another beauty for a lucky room. Use colors to contrast or blend with your individual decor. AUNT LYDIA and STAR Rug Yarns have colors for every taste.

ROOM SIZE RUG — 18 of these 24" x 36" foundations, sewn together, will make a room size rug 9 feet wide by 12 feet long or for a smaller rug sew 9 of these together for a 6 x 9 rug.



COLORS ARE INDICATED ON EACH RUG FOUNDATION

# Maple-leaf

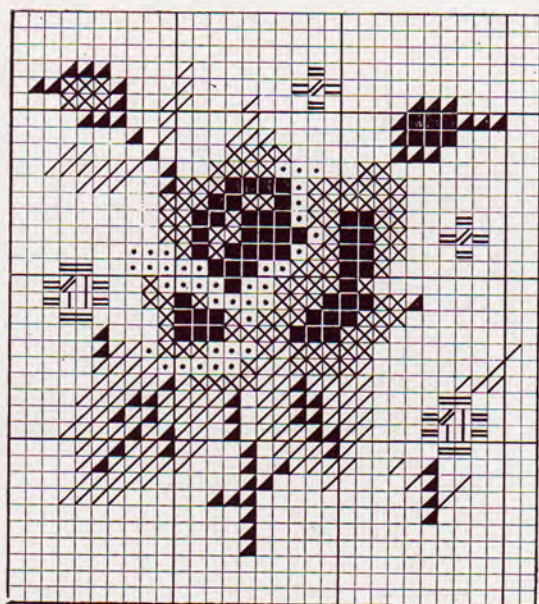
On each dot of the rug foundation simply sew in a tuft of any of the rug yarns with AUNT LYDIA Carpet and Button Thread. Directions for making tufts are conveniently illustrated on page 2.



<https://www.knitting-and.com>

# Crocheted Loop Rug

Materials Required: American Thread Company "STAR" Rug Yarn, Article 44, or "AUNT LYDIA" Heavy Rug Yarn, Article 235



- |             |              |
|-------------|--------------|
| ◻ PINK      | ◼ DK. GREEN  |
| ⊗ OLD ROSE  | ◻ LT. BLUE   |
| ■ DK. ROSE  | ▨ MED. BLUE  |
| ▨ LT. GREEN | ▨ LT. YELLOW |

43 Skeins Cream.

1 Skein each of Light Green, Dark Green, Lavender, Lilac, Yellow, Orange, Rust, Light Rose, Dark Rose, Old Rose, Light Blue and Medium Blue.

Steel Crochet Hook No. 00.

1 Large Tapestry Needle.

Each square measures about 13 inches. 12 squares 3 x 4 are required for rug measuring about 43 x 58 inches. With Cream ch 33, s c in 2nd st from hook, 1 s c in each remaining st of ch, ch 1, turn.

**2nd Row**—1 s c in each s c, ch 1, turn.

Repeat 2nd row until 36 rows have been worked, then without breaking yarn, work a row of s c all around working 1 s c in each st on upper and lower edges, 1 s c in each row on sides working 3 s c in each corner, turn.

With wrong side of work toward you, work 1 loop st in each st and 3 loop sts in center st at each corner (loop st: wind yarn over index finger, insert needle in st, draw yarn through pulling yarn from under finger, drop loop from finger letting loop fall to right side of work and complete s c).

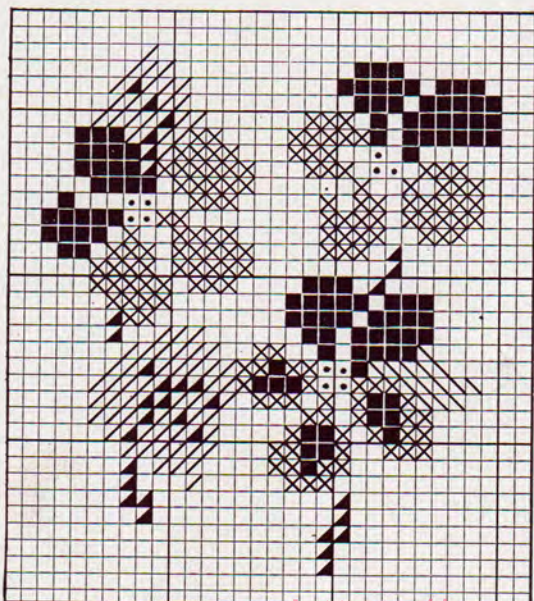
**Next 3 Rows**—Repeat last row.

**Next Row**—1 loop st in each loop st working 1 loop st, ch 1, 1 loop st in center st at each corner, break yarn.

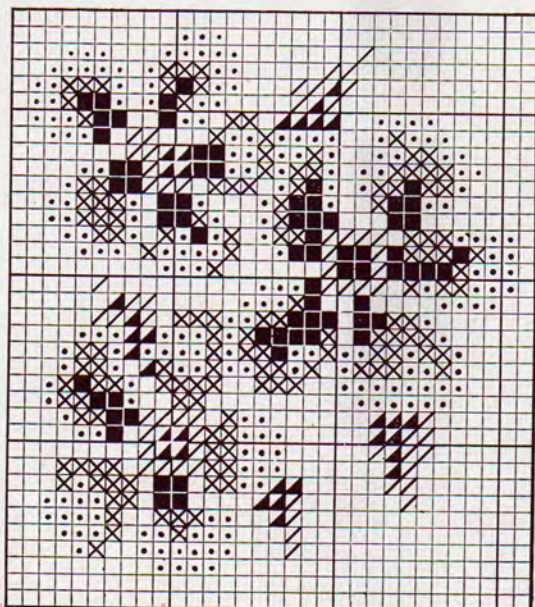
Work 11 more squares in same manner.

Embroider squares in cross st following charts. Embroider 4 squares of each pattern. Sew squares together having all rows running in same direction, having 1 Rose, 1 Yellow and 1 Lavender design in 1st row, 1 Lavender, 1 Rose, 1 Yellow design in 2nd row, 1 Yellow, 1 Rose, 1 Lavender design in 3rd row, 1 Lavender, 1 Yellow, 1 Rose design in 4th row.

**EDGE:** Work 5 rows of loop sts all around working 1 loop st in each loop st to corner, 1 loop st, ch 1, 1 loop st in the ch 1 at each corner.



- |             |              |
|-------------|--------------|
| ⊗ LAVENDER  | ■ LILAC      |
| ▨ LT. GREEN | ◻ LT. YELLOW |
| ◼ DK. GREEN |              |



- |              |             |
|--------------|-------------|
| ◻ LT. YELLOW | ⊗ ORANGE    |
| ■ RUST       | ▨ LT. GREEN |
| ◼ DK. GREEN  |             |



# Crocheted Loop Rug



Motifs in single crochet with loop borders.  
Embroider each square in handsome flower  
colors. Directions and charts on page 6.



<https://www.knitting-and.com>





# Mexican

A Sleeping "Mejicano". Brilliant warm colors go so well with Knotty Pine and Maple furniture. See page 10 for Materials Required.



<https://www.knitting-and.com>



# Horse's Head

A wonderful horse head in rich Browns and Tans . . .  
Beautiful on a rich Green background . . . and so  
easy to make. See page 10 for Materials Required.



<https://www.knitting-and.com>

**STAR Rug Yarn**

**Article 44**

- 1 skein Red No. 52
- 2 skeins Dk. Red No. 55
- 2 skeins Peach No. 48
- 2 skeins Lt. Yellow No. 22A
- 1 skein Dk. Brown No. 46
- 2 skeins Brown No. 43
- 7 skeins Med. Blue No. 14
- 6 skeins Beige No. 10
- 1 skein Lt. Green No. 37
- 3 skeins Dk. Green No. 40

**AUNT LYDIA Heavy Rug Yarn**

**Article 235**

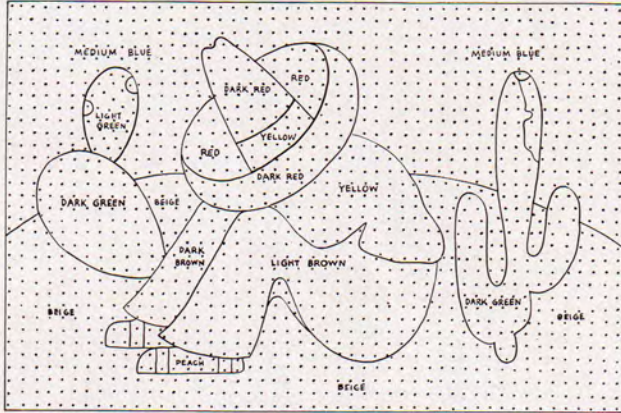
- 1 skein Red No. 251
- 1 skein Dk. Red No. 254
- 1 skein Peach No. 248
- 1 skein Lt. Yellow No. 221
- 1 skein Brown No. 245
- 2 skeins Lt. Brown No. 241
- 4 skeins Med. Blue No. 214
- 4 skeins Beige No. 210
- 1 skein Lt. Green No. 237
- 2 skeins Dk. Green No. 239

**STAR Blend Yarn**

**Article 75**

- 1 skein Red No. 52
- 2 skeins Wine No. 57
- 1 skein Peach No. 48
- 2 skeins Lt. Yellow No. 22A
- 1 skein Black No. 58
- 2 skeins Brown No. 43
- 6 skeins Med. Blue No. 14
- 5 skeins Cream No. 3
- 1 skein Lt. Green No. 37
- 2 skeins Dk. Green No. 40

and 3 Spools AUNT LYDIA Carpet and Button Thread



COLORS ARE INDICATED ON EACH RUG FOUNDATION

Dots on the design of each rug foundation indicate where each color tuft should be sewn with AUNT LYDIA Carpet and Button Thread.

Just follow the simple directions on page 2 of this book on how to make the tufts and you will have a stunning rug in a very short time. For your convenience, the colors to be used are plainly printed on each Rug pattern.

**STAR Rug Yarn**

**Article 44**

- 1 skein White No. 1
- 7 skeins Rust No. 28
- 3 skeins Brown No. 43
- 1 skein Black No. 58
- 10 skeins Lt. Green No. 37

**AUNT LYDIA Heavy Rug Yarn**

**Article 235**

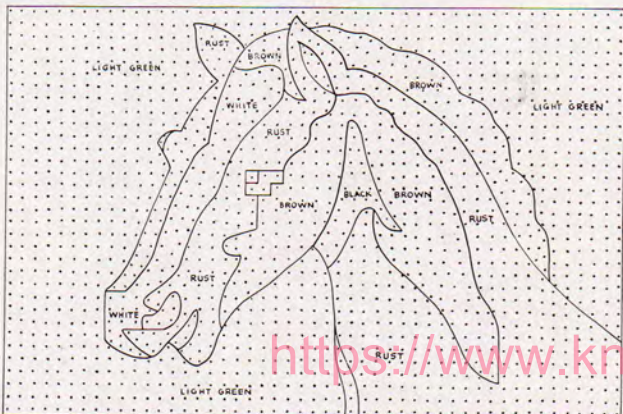
- 1 skein White No. 21
- 4 skeins Rust No. 227
- 2 skeins Lt. Brown No. 241
- 1 skein Black No. 258
- 6 skeins Lt. Green No. 237

**STAR Blend Yarn**

**Article 75**

- 1 skein White No. 1
- 9 skeins Brown No. 43
- 1 skein Black No. 58
- 9 skeins Lt. Green No. 37

and 3 Spools AUNT LYDIA Carpet and Button Thread



COLORS ARE INDICATED ON EACH RUG FOUNDATION

**Horses - Horses - Horses!**

Every den or child's room should have a Horse design. Make this one to delight the "Hims" in your family.

On the all STAR Rug Foundation you will find dots into which color tufts should be sewn with AUNT LYDIA Carpet and Button Thread. After you have learned how to make a tuft from the simple directions on page two you are all set to start on whichever rug design you please.

<https://www.knittingand.com>

# Braided Charm

A braided rug made with AUNT LYDIA or STAR  
Rug Yarn. Make it in bright or muted colors.  
Instructions are on page 13.

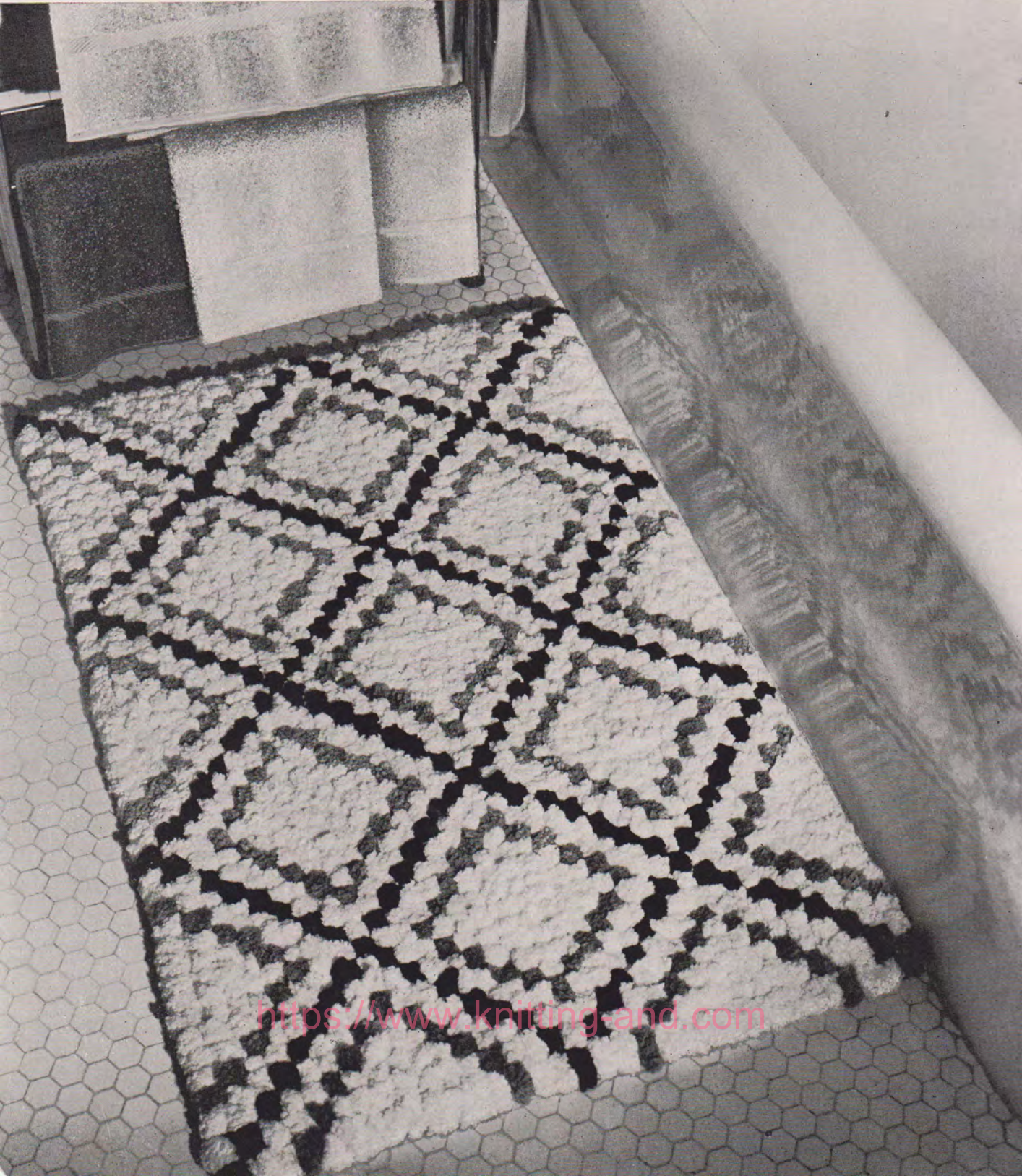


<https://www.knitting-and.com>

# Double Square



Another Beauty that may double for bathroom, living room or bedroom . . . all according to the color scheme you choose. We suggest 3 different color schemes on page 12.



# Double Square No. 526 . . . Materials Required: 1 STAR Rug Foundation No. 526

## AUNT LYDIA Heavy Rug Yarn

### Article 235

- 2 skeins Black No. 258
- 2 skeins Gray No. 259
- 9 skeins White No. 21
- or
- 2 skeins Nat. Blue No. 216
- 2 skeins Lt. Blue No. 213
- 9 skeins Natural No. 24
- or
- 2 skeins Dk. Green No. 239
- 2 skeins Lt. Green No. 237
- 9 skeins Cream No. 23

## STAR Rug Yarn

### Article 44

- 3 skeins Black No. 58
- 3 skeins Gray No. 60
- 16 skeins White No. 1
- or
- 3 skeins Nat. Blue No. 16
- 3 skeins Lt. Blue No. 13
- 16 skeins Natural No. 4
- or
- 3 skeins Dk. Green No. 40
- 3 skeins Lt. Green No. 37
- 16 skeins Cream No. 3

## STAR Blend Yarn

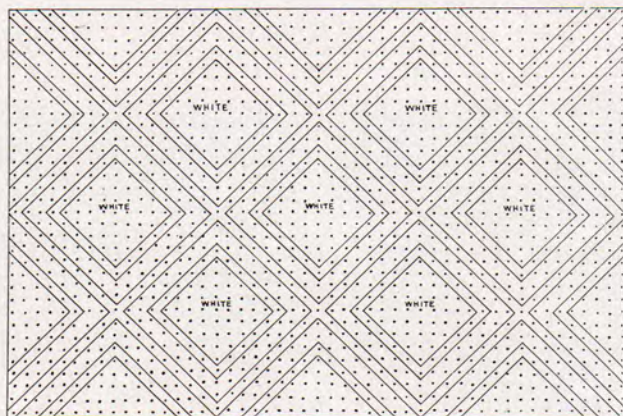
### Article 75

- 3 skeins Black No. 58
- 3 skeins Gray No. 60
- 14 skeins White No. 1
- or
- 3 skeins Nat. Blue No. 16
- 3 skeins Baby Blue No. 13
- 14 skeins Natural No. 4
- or
- 3 skeins Dk. Green No. 40
- 3 skeins Lt. Green No. 37
- 14 skeins Cream No. 3

and 3 Spools AUNT LYDIA Carpet and Button Thread

Dots on the design of the rug foundation indicate where each color tuft should be sewn with AUNT LYDIA Carpet and Button Thread. Follow the directions on page two for making tufts and you shall have a very handsome rug in a very short time.

**ROOM SIZE RUG**—This design multiplied 18 times will make a smart room size rug 9 feet by 12 feet. Or for a smaller version sew 9 foundations together to form a 6 x 9 rug.



COLORS ARE INDICATED ON EACH RUG FOUNDATION

## Square Braided Rug

. . . Illustrated on Page 11—This rug may be made with any of the American Thread Company products listed below:

Size of Rug 24" x 24".

## AUNT LYDIA Heavy Rug Yarn

### Article 235

- 2 skeins Dark Green
- 1 skein Orange
- 2 skeins Rust
- 2 skeins Light Yellow
- 4 skeins Dark Brown
- 2 skeins Light Brown
- 2 skeins Beige

## STAR Rug Yarn

### Article 44

- 2 skeins Dark Green
- 1 skein Orange
- 2 skeins Rust
- 2 skeins Light Yellow
- 4 skeins Dark Brown
- 2 skeins Brown
- 2 skeins Beige

## AUNT LYDIA Button and Carpet Thread

### Article 1

- 1 spool Green
- 1 spool Yellow
- 1 spool Brown
- 1 spool Natural

Directions for Braiding—Each braid consists of 9 strands. Fold in half and tie through center with "AUNT LYDIA" Carpet and Button Thread, you now have 18 strands. Divide strands in 3 parts and braid firmly.

**CENTER!** With Green cut 4½ yd. lengths and braid. Starting with tied end form a circle and pull center together and sew firmly, then continue laying braid around center having loops of each braid side by side. Thread a blunt needle using "Aunt Lydia" Button and Carpet Thread and pass needle through a loop on outside of circle, then through adjoining loop on braid being used. Alternate between the 2 braids increasing as necessary to keep work flat until there are 24 loops on outside edge, fasten firmly and cut any remaining yarn.

**Next Row**—With Orange cut 3⅓ yd. lengths and braid. \* Lace 6 loops straight, skip 12 loops of braid being

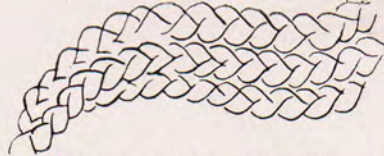
added, repeat from \* 3 times, fasten firmly and cut remaining yarn. Lace together inside edges of loops that were skipped to form the spokes. Each row is started with the end of braid that is tied and each row is fastened firmly.

**3rd Row**—With Rust cut 4 yd. lengths and lace around previous row increasing 2 loops at top of each spoke.

**4th Row**—Same as 3rd row.

**5th Row**—With Yellow cut 4 yd. lengths and work in same manner. The remainder of rug is worked in same manner cutting 4½ yd. length of Dark Brown for each of the next 2 rows, 5 yd. lengths of Beige for next 2 rows, 6 yd. lengths of Green for next row, 6 yd. lengths of Light Brown for each of the next 2 rows, 6½ yd. lengths of Yellow for next row, 7 yd. lengths of Dark Brown for next row, 8 yd. lengths of Dark Brown for next row.

# Braided Rug



... This rug may be made with any of the American Thread Company products listed below: Size of Rug 24" x 29" without fringe.

## AUNT LYDIA Heavy Rug Yarn

### Article 235

4 Skeins Dark Green    3 Skeins Lt. Yellow  
 4 Skeins Turquoise    2 Skeins National Blue  
 4 Skeins Lilac  
 4 Skeins Orange        2 Skeins Gray

## STAR Rug Yarn

### Article 44

4 Skeins Dark Green    3 Skeins Lt. Yellow  
 4 Skeins Turquoise    2 Skeins National Blue  
 4 Skeins Lilac  
 4 Skeins Orange        2 Skeins Gray

## and AUNT LYDIA Button and Carpet Thread Article 1

1 Spool Green  
 1 Spool Yellow  
 1 Spool Gray

Measure 18 strands for each braid.

Cut 3 yd. lengths of National Blue, divide in half and knot each half about 7 inches from end for fringe. Using these lengths divide evenly in 3 parts and braid. Starting next to knot, skip 6 loops on side of braid, draw the 7th and 9th loop together to form a point, break thread. \* Skip next 6 loops on braid, draw the 7th and 9th loop together to form a point having the point face in opposite direction, repeat from \* until there are 4 points facing upward and 4 points facing downward, skip 6 loops on braid and knot end same as opposite end, leaving same amount for fringe.

With Yellow work another braid in same manner and lace braids together as follows, thread a blunt needle with "Aunt Lydia" Carpet and Button thread and pass needle through entire loop of 1st braid, then pass needle through entire loop of 2nd braid, and draw together, continue in same manner alternating between the 2 braids having the points over points of previous row. Continue in same manner for entire rug having \* 1 row Green, 1 row Orange, 1 row Lilac, 1 row Turquoise, 1 row Gray, 1 row Turquoise, 1 row Lilac, 1 row Orange, 1 row Green, 1 row Yellow, repeat from \* once, then work 1 row National Blue. Trim fringe evenly.



*Pansy No. 523* . . . Illustrated on Front Cover—Materials Required: 1 STAR Rug Foundation No. 523

**STAR Rug Yarn**

**Article 44**

- 2 skeins Orange No. 25
- 4 skeins Lt. Yellow No. 22A
- 4 skeins Lavender No. 49
- 2 skeins Lilac No. 50
- 1 skein Dk. Brown No. 46
- 7 skeins Dk. Green No. 40
- 4 skeins Black No. 58

**AUNT LYDIA Heavy Rug Yarn**

**Article 235**

- 1 skein Orange No. 226
- 3 skeins Lt. Yellow No. 221
- 2 skeins Lavender No. 249
- 1 skein Lilac No. 250
- 1 skein Dk. Brown No. 245
- 4 skeins Dk. Green No. 239
- 3 skeins Black No. 58

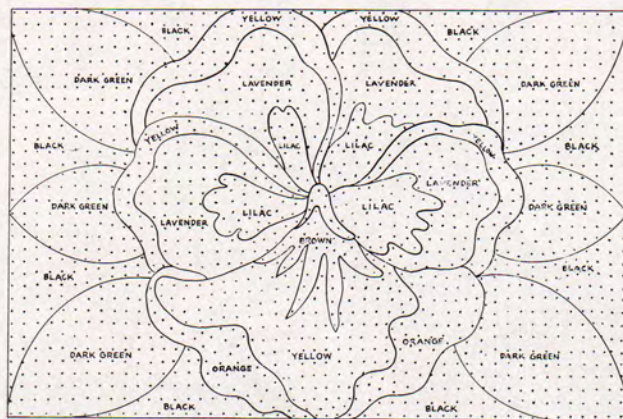
**STAR Blend Yarn**

**Article 75**

- 2 skeins Peach No. 48
- 4 skeins Lt. Yellow No. 22A
- 4 skeins Lavender No. 49
- 2 skeins Lilac No. 50
- 1 skein Brown No. 43
- 6 skeins Dk. Green No. 40
- 4 skeins Black No. 58

and 3 Spools AUNT LYDIA Carpet and Button Thread

Bring your garden indoors — and scatter pansy rugs here and there for that gay summertime feeling all year round. For a more unusual rug you can tuft only the flower's face and trim away the rest of the foundation, allowing enough fabric to make a 1" hem.



COLORS ARE INDICATED ON EACH RUG FOUNDATION

*Duckling No. 525* . . . Illustrated on Back Cover—Materials Required: 1 STAR Rug Foundation No. 525

**STAR Rug Yarn**

**Article 44**

- 6 skeins Lt. Yellow No. 22A
- 2 skeins Orange No. 25
- 13 skeins Nat. Blue No. 16

**AUNT LYDIA Heavy Rug Yarn**

**Article 235**

- 4 skeins Lt. Yellow No. 221
- 1 skein Orange No. 226
- 8 skeins Nat. Blue No. 216

**STAR Blend Yarn**

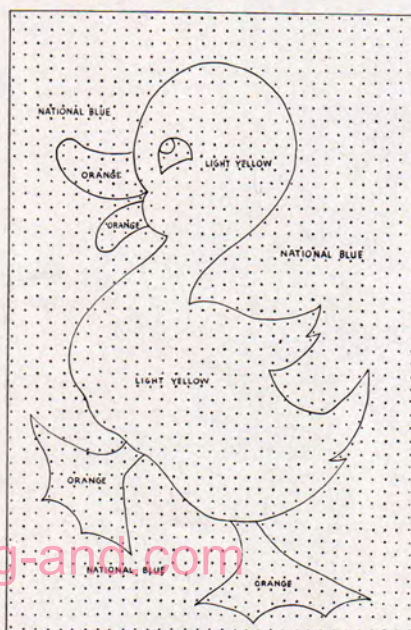
**Article 75**

- 5 skeins Lt. Yellow No. 22A
- 2 skeins Peach No. 48
- 12 skeins Nat. Blue No. 16

and 3 Spools AUNT LYDIA Carpet and Button Thread

A yellow duckling with Orange beak and webbed feet—so gay for a child's room. Our background is Blue but choose your own to match the "little darlin's" own color scheme. Sew in a color tuft on each dot of the rug foundation with AUNT LYDIA Carpet and Button Thread.

Directions on page two easily illustrate how to make a tuft with any one of the rug yarns mentioned above.



COLORS ARE INDICATED ON EACH RUG FOUNDATION



# Beautiful Rugs

*Easy-to-make*

**TUFTED  
CROCHETED  
BRAIDED**

<https://www.knitting-and.com>