



# Thank you

for downloading this pdf file from [Knitting-and.com](http://Knitting-and.com)!

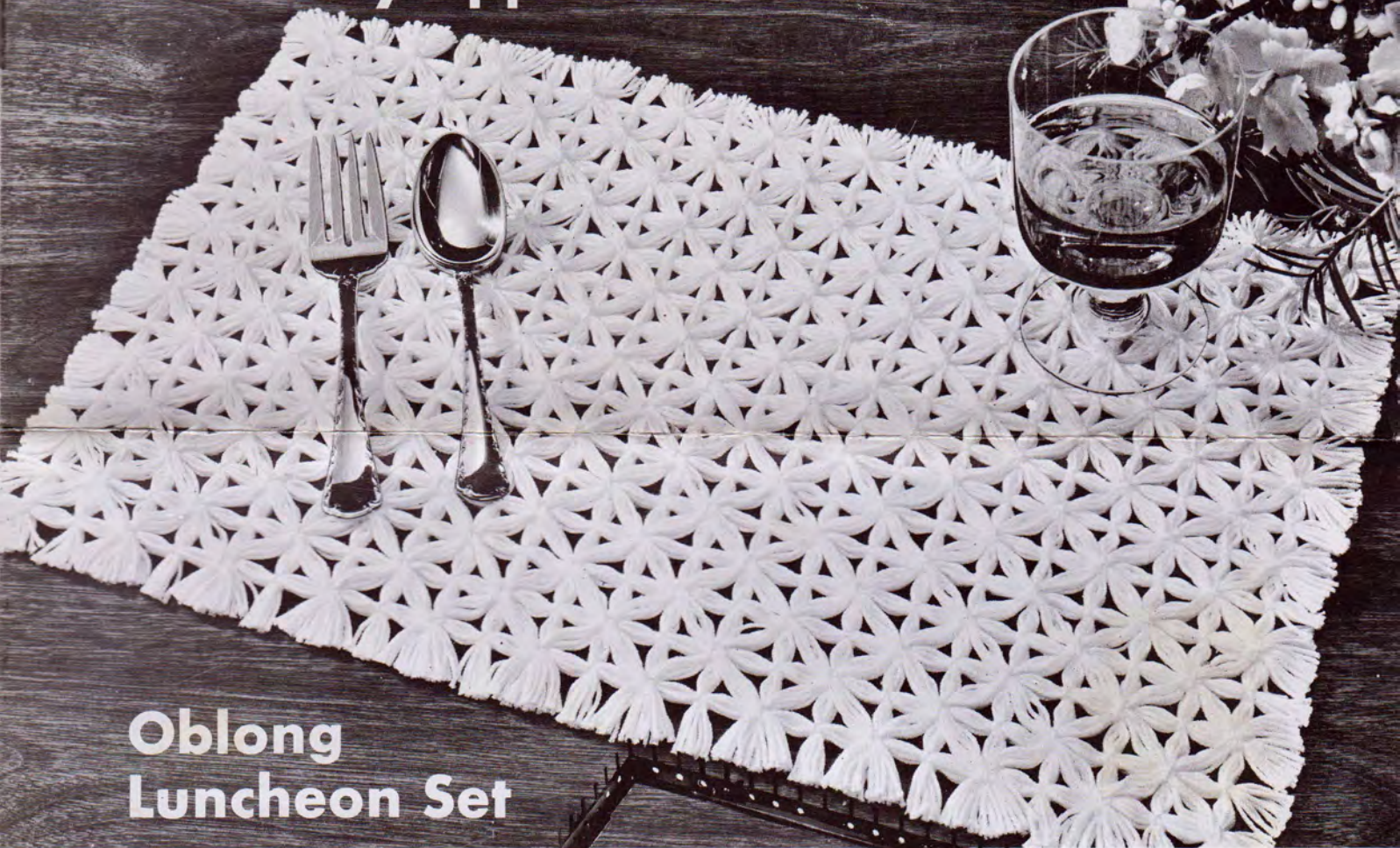
Your visits have helped keep Knitting-and.com online, providing free crafts and recipes since 1996.

There are hundreds of free patterns and crafts available and more added all the time!

**Note:** The pink watermark on the following pages will not show if you print this file.



For a beautifully and  
correctly appointed table



Oblong  
Luncheon Set  
made on  
the  
NEW



## **SPEED-O-WEAVE TWIN**

Square or Oblong Loom

<https://www.knitting-and.com>

NO. 817-T





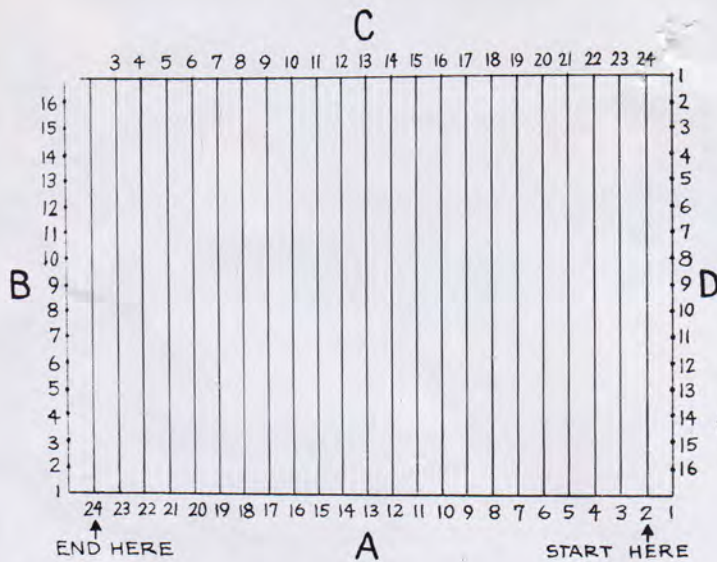


Fig. 1 This illustration shows loom wound in 1st direction for place mat.

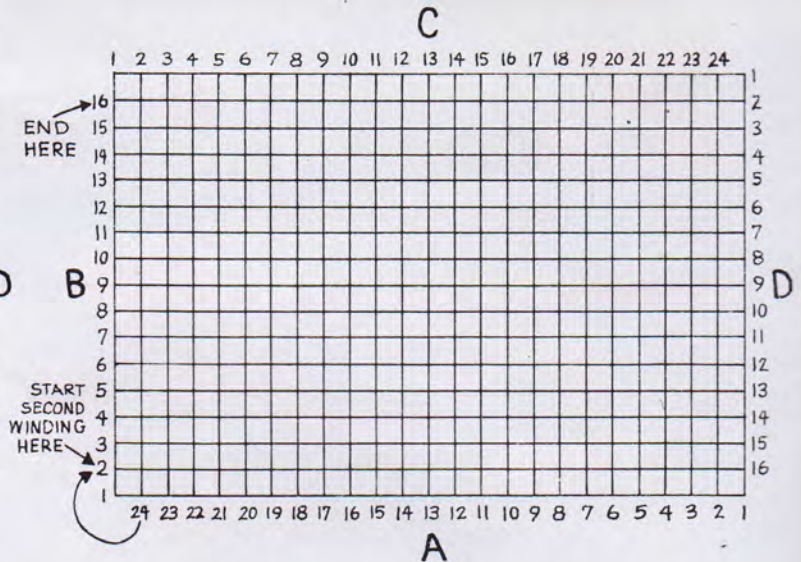


Fig. 2 This illustration shows loom wound in 1st and 2nd directions for place mat.

## General Instructions For Using Lily's New Speed

You will find Speed-O-Weaving on Lily's new Speed-O-Weave TWIN a fascinating, easy and delightful way to make a large and interesting variety of designs in squares and oblongs - requires no previous experience or skill. Squares, ranging in size from 4½ to 15 inches, and rectangles in almost any desirable size are possible. Either of which may be joined together to make larger articles as chair sets, table runners, dresser scarves, stoles, afghans, table cloths and bedspreads.

### ASSEMBLING THE LOOM

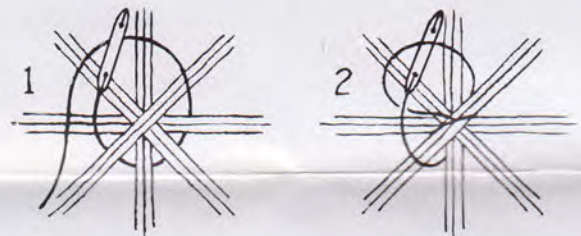
This new twin loom consists of four right angle sections and six extension sections, each made with prongs to hold the thread, and holes through which they are fastened together with bolts and wing nuts. The loom is assembled by lapping the right end of one section inside the left end of another and bolting together firmly. Insert bolts from inside of sections, through matching holes as near the center of the overlap as possible, and screw wing nuts on outside. Any desired size can be made by overlapping or extending the sections to the required length.

### WINDING AND TYING THE LOOM

Speed-O-Weaving is simply the winding of threads back and forth across the loom in several directions (see illustrations 1, 2, 3 and 4), and tying them where they cross (shown by dots on illustration 4), to form designs. On the illustrations given in the directions for making a design, each side of the loom is lettered and each prong numbered. The corner prongs are always No. 1. Before winding is begun, tie a string around "A" side to mark it. Begin the winding by tying the thread to a specified prong and winding it back and forth around a specified prong on an opposite side (these two prongs are called a pair) of the loom as many times as specified. Four times will make eight threads between prongs, six times will make 12 threads, etc. After winding is completed on 1st pair of prongs, take thread around **outside** of loom to **left** (clockwise) and wind around next specified pair, parallel to 1st pair. When this has been repeated across frame (fig. 1) take thread around corner and repeat the winding in a 2nd direction (fig. 2), then in a 3rd and 4th direction (figures 3 & 4). These windings are called a **round**. Instructions call for repeating the round.

This is done to give an even appearance - winding more than 12 threads at one time gives a lumpy appearance. Always wind threads tight enough so they will not sag. When all windings are completed, tie them together at "intersections". An intersection is any place lines of threads cross.

The "tying" of the loom is done with a shuttle that is supplied with each loom. Tie the thread around the groove in the shuttle and wind on as much thread as it will conveniently hold, leaving a foot hanging loose. Turn the loom over and tie from the back. Tie the loose end of shuttle thread to a corner "intersection" of threads (see dots on Fig. 4). Around this intersection of threads there are six openings which can be tied by means of "half-hitches".



A half-hitch is made by passing the shuttle down through one opening, bringing it up through the opening directly opposite and inserting it through the loop thus made. Pull the loop as tight as possible. Repeat half-hitches through remaining openings. Move on to next intersection, passing shuttle down through opening on far side of intersection and tie all openings. Tie all intersections.

When tying is completed, if article made is to be fringed, remove it from the loom by cutting the threads just inside prongs with scissors, or on outside of prongs with razor blade. Comb out fringe and trim evenly - if squares or rectangles are to be joined together for a larger article, thread a long strand of thread to a needle and working on outside of loom, make 3 buttonhole stitches through all loops on a corner prong, two buttonhole stitches through all loops around each prong to next corner, three stitches in corner prong, repeated around loom. Join to start of round and fasten. Remove from loom and lay 2 blocks side-by-side and working on back sew together with neat over-and-over stitches



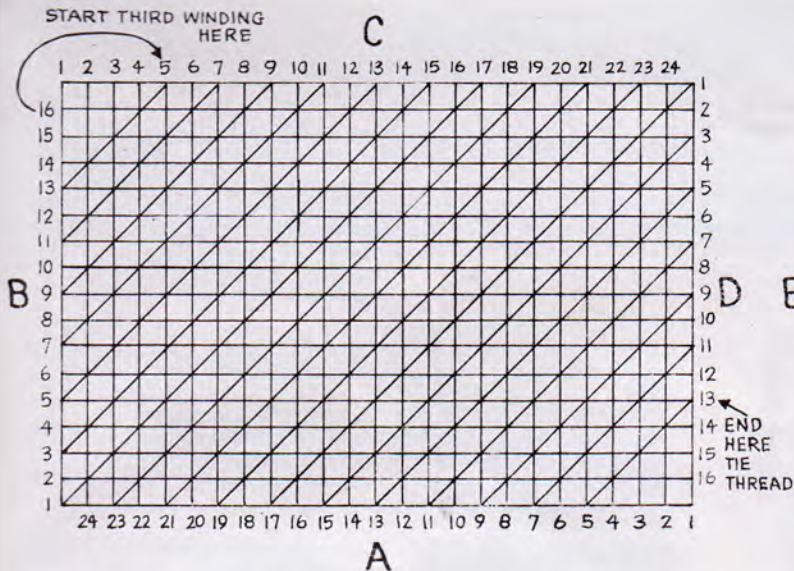


Fig. 3 This illustration shows loom wound in 1st, 2nd and 3rd directions for place mat.

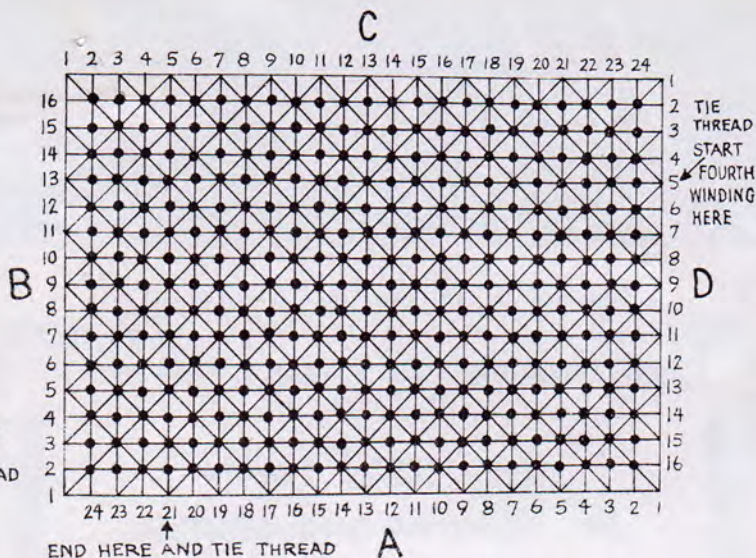


Fig. 4 This illustration shows loom wound in 1st, 2nd, 3rd and 4th directions for 1st and 2nd Rounds. It is now ready to be tied.

## Speed-O-Weave TWIN

through corner buttonhole stitches, then through next buttonhole stitches to end of block. Sew blocks together into strips, then sew strips together, exactly matching corners.

## OBLONG LUNCHEON SET

**LILY FROST-TONE MERCERIZED CROCHET COTTON, Art. 49:** 6 cones White, Cream, Ecreu or a color for a centerpiece and 4 place mats; or

**LILY DOUBLE QUICK MERCERIZED CROCHET COTTON, Art. 50:** 13 skeins White, Cream, Ecreu or a color for a centerpiece and 4 place mats.

1 - Lily Speed-O-Weave TWIN.

SIZE - 11" x 16½".

To form a rectangle, extend 2 long sides of Frame (A & C) to 18 inches and 2 ends (B & D) to 12 inches. Tie a string around "A" side to mark it. Hold Frame with "A" side facing you.

**NOTE:** Wind DOUBLE QUICK 3 times (6 threads) or FROST-TONE 6 times (12 threads) around each pair of prongs in 1st Round. Directions are given for DOUBLE-QUICK; changes for FROST-TONE are in parenthesis.

**1st ROUND:** Following Chart, tie thread to A-2 prong (see arrow).

**1st DIRECTION:** Wind thread 3 times (or 6 times for FROST-TONE, see NOTE above) across Frame to C-24 prong. **PATTERN:** Wind thread 3 times (or 6 times for FROST-TONE) around next pair of prongs to left. Repeat this PATTERN 21 times across Frame, having all lines parallel, ending on A-24 to C-2 prongs. Do not cut the thread as it can be carried to next winding.

**2d DIRECTION:** Take thread around corner and wind 3 times (6 times for FROST-TONE) lengthwise of Frame around B-2 to D-16 prongs. Repeat PATTERN 14 times across Frame, having all these lines parallel, ending on B-16 to D-2 prongs.

**3d DIRECTION:** Take thread around corner to C-5 prong and wind 3 times (6 times for FROST-TONE) across corner to B-13 prong. **PATTERN:** Skip 1 pair of prongs and wind 3 times (6 times for FROST-TONE) around next pair. Repeat PATTERN 15 times across Frame to diagonally opposite corner, having all lines parallel, ending on D-13 to A-5 prongs. Tie securely.

**4th DIRECTION:** Tie thread to D-5 prong and wind 3 times (6 times for FROST-TONE) across corner to C-21 prong. Repeat

**PATTERN** in 3d Direction 16 times across Frame to diagonally opposite corner, having all lines parallel, ending on A-21 to B-5 prongs. Tie securely.

**2d ROUND:** Repeat 1st Round except wind DOUBLE QUICK only twice (4 times for FROST-TONE) in all windings for a total of 10 DOUBLE QUICK threads or 20 FROST-TONE threads between each pair of prongs.

**TYING:** Follow instructions for "TYING": Wind thread on shuttle and working on back of Frame, tie all intersections (see dots on Chart). Cut threads on outside of prongs with scissors, comb out fringe and trim evenly. Pin mat right-side-down on a padded board. Steam and press dry thru a doubled cloth. Make five for a centerpiece and 4 place mats.



## BASIC SQUARE DESIGN

The above basic square design may be made smaller or larger, by closing or extending sides of loom, and used as pot holders, hot dish mats, centerpieces, etc., or joined together in any shape and size for large articles as table runners, stoles, afghans, bedspreads and tablecloths.

To make this 10 inch square design, join the right angle pieces together so each side measures 10½ inches, and wind two Rounds of threads as in luncheon set, following windings as shown in Fig. 5. First Direction begins on A-2 prong, ends on A-14; Second Direction begins on B-2 prong, ends on B-14, etc.

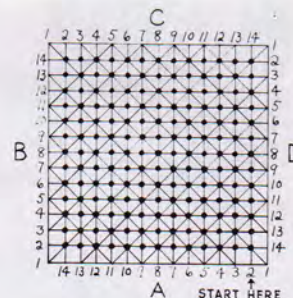


Fig. 5 This illustration shows the loom wound for the basic square design.





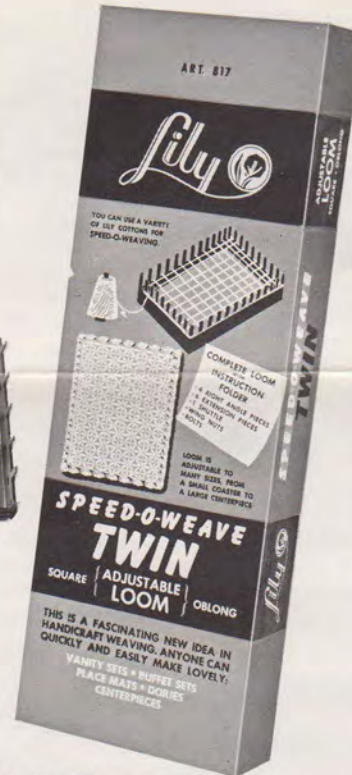
# SPEED-O-WEAVE

# LOOMS

## Adjustable to many sizes and shapes squares oblongs hexagons

### THE NEW TWIN for squares and oblongs

Loom consists of four right angles, six extension sections, adjusting bolts and shuttle—packed in box with design and instruction Leaflets.

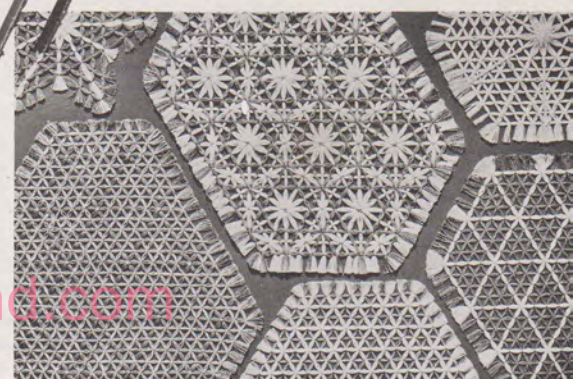


There is no limit to the beautiful designs now possible by combining the adjustable, interchangeable sections of Lily's original hexagon loom and its New Twin. If you do not have the hexagon loom, get one today and give your imagination free rein. You will be amazed and extremely proud of your own creations.

### THE ORIGINAL for hexagon designs

Loom consists of six obtuse angles, adjusting bolts and shuttle—packed in box with design and instruction book No. 95-S.

Instructions for making these and many other hexagon designs are contained in book No. 95-S.



LILY MILLS COMPANY  
Shelby, N. C.

<https://www.knitting-and.com>

PAMPHLET  
817-T

PRINTED IN U.S.A.

10M 4-70 PP