



Thank you

for downloading this pdf file from knitting-and.com!

Your visits have helped keep Knitting-and.com online, providing free crafts and recipes since 1996.

There are hundreds of free patterns and crafts available and more added all the time!

Note: The pink watermark on the following pages will not show if you print this file.

RUGS

NEEDLEPOINT


CROCHETED

HOOKEO

FLUFF



<https://www.knitting-and.com>

Lily  Design Book No. 54

10¢ IN U.S.A.

COVER DESIGN

CROCHETED RUG NO. 1

"SHOW YOUR COLORS"

MATERIALS—Lily Cotton Rug Yarn, Art. 241, or Lily Rug Worsted, Art 71, in desired colors and quantity for any size up to a room-size rug. Crochet hook size H-6.

Starting at one short end, make a chain several inches longer than desired width of rug. **ROW 1**—Sc in 2d ch from hook and in each ch across until row measures 2" short of desired width, being sure to have an even number of sc. Cut off remaining chain. Ch 1, turn. **ROW 2**—* Sc in next st, sc down at base of next st (long sc made). Repeat from * across, ending with long sc. Ch 1, turn. Repeat 2d row once. ** Cut yarn 3" long. Starting 3" from end of next color, draw it thru lp on hook (ch-1 made). Tie 3" ends of 2 colors tog. in a hard double knot and let ends hang on edge. **ROW 3**—Turn and repeat Row 2 once, twice or more times. Continue in same way, repeating from **, using a few colors, or as in illustration (in Cotton Rug Yarn), in every color yarn, is made. Make from one to 3 or 4 rows of each color, putting blending colors tog. and using more Beige, Gray, Browns, Peach, Salmon Rose and Black to separate the brighter colors.

For a small rug, continue for desired length. **Border** — In Dk. Brown, make 2 sc in 1st sc in last row, * sk next long sc,

2 sc in next sc. Repeat from * across, ending with 3 sc in end long sc. (1 sc between next 2 long sc down long side, 2 sc between next 2 long sc) repeated across, working over the yarn ends which were left hanging. 3 sc in corner sc. Repeat from * around. Make 1 sc in 1st corner, sl st in 1st sc and fasten off. **ROW 2**—In Dk. Green, make sc in each sc around, with 3 sc in center sc of each 3-sc group at corners. Fasten off. Repeat Row 2 in Black.

For a larger rug or a room-size rug, work rows in same way, crosswise, until strip is 25" to 30" long. Fasten off. Make additional strips for desired length of rug. **Joining**—Lay 2 strips side-by-side on a table and sew final row of one strip to starting row of other strip. Use one strand of yarn and go thru each st twice, making long stitches in a zigzag row to carry out the long sc pattern. If carefully done, the joinings are invisible. Repeat until all strips are joined. Then repeat Border.

For a rug of 7" blocks, ch 19, sk last ch, sc in remaining 18 ch. Ch 1, turn and repeat from Row 2 until block is square (about 23 rows). Fasten off and repeat Border, with the same number of sc on each side. Make required number of blocks for desired rug size. Sew tog. into strips, going thru one lp of each sc, turning blocks so rows are alternately crosswise and lengthwise of strip. Then sew strip tog. being careful to exactly match corners.

Steam rug on back with hot iron and wet cloth, then press dry thru a cloth.

Designs by Esther Parnell Hewlett

Photographs by Frank Hewlett



RUG MAKING MATERIALS

LILY COTTON RUG YARN, Art 241 — Soft, quick-working, 4-ply cotton yarn, in a range of 33 boil-proof colors. Useful for rugs in hooking, crocheting, knitting, needlepoint and fluff — 70-yard skeins. Use Lily Cotton Rug Yarn for easily-washed, bright-colored scatter rugs or room size rugs.

LILY RUG WORSTED, Art 71 — A long wearing worsted rug yarn especially constructed for making hooked rugs or pom pon and fluff rugs. Packed in one ounce skeins, in an 18 color range.

LILY RUG FOUNDATIONS—Available in correct sizes for Cross Stitch Needlepoint Rug page 4, Fluff Rug page 9, Pom Pon Rug page 8, Hooked Rug page 12, and Round Hooked Rug page 13.

LILY POM and TUFT FORM, Art. 421. A quick, neat way to make poms or fluffs for the beautiful kitten-soft Pom Rug shown on pages 8 and 9, and the Fluff Rug shown on page 9.

COPYRIGHT 1950 — LILY MILLS COMPANY

SHELBY, N. C.

First Edition

Printed in U.S.A.

<https://www.knittingand.com>

Crocheted Rug No. 2

"Confetti Colors"

ILLUSTRATION ON PAGE 9

MATERIALS—Lily Rug Worsted, Art. 71:—13-sks. Dk. Brown, 5-sks. Scarlet and 4-sks. each Yellow, Tan, Brown, Lt. Green and Dk. Green; or Lily Cotton Rug Yarn, Art. 241:—5-sks. Dk. Brown, and 2-sks. each Red, Yellow, Beige, Brown, Lt. Green and Dk. Green.

Crochet hook size H-6. Size 22"x36".
BLOCK—In Tan, ch 30. **ROW 1**—Sc in 4th ch from hook, (ch 1, sk 1 ch, sc in next ch) 13 times to end. Ch 2, turn. **ROW 2**—Sc between last 2 sc, (ch 1, sc between next 2 sc) 13 times across to end ch. Cut 2½" long. **ROW 3**—Starting 2½" from end of Brown, draw a lp of it thru lp on hook (turning ch-1 made), make a 2d ch, turn and letting ends of both colors hang loose at end of row, sc between last 2 sc, (ch 1, sc between next 2 sc) 13 times across to end ch-2. Ch 2, turn. Repeat Row 2. Repeating Rows 3 and 2, make 2 rows each in Scarlet, Yellow, Dk. Green, Lt. Green, Scarlet, Lt. Green, Dk. Green, Yellow, Scarlet, Brown and Tan. Use the right side of 2d row of each color for right side of rug. With Block wrong-side-up, tie each pair of yarn ends tog. tightly in a hard, double knot across edge of Block. Thread each end to a large needle and weave back thru an adjoining row.

Edge—With Block right-side-up, sc in Dk. Brown in ch-2 at start of final Tan row, * (2 sc between next 2 sc) 13 times, sc in corner, 2 sc in each stripe down side (26 sc), * sc in corner. Repeat from * to *. Sl st in 1st sc. Fasten off.

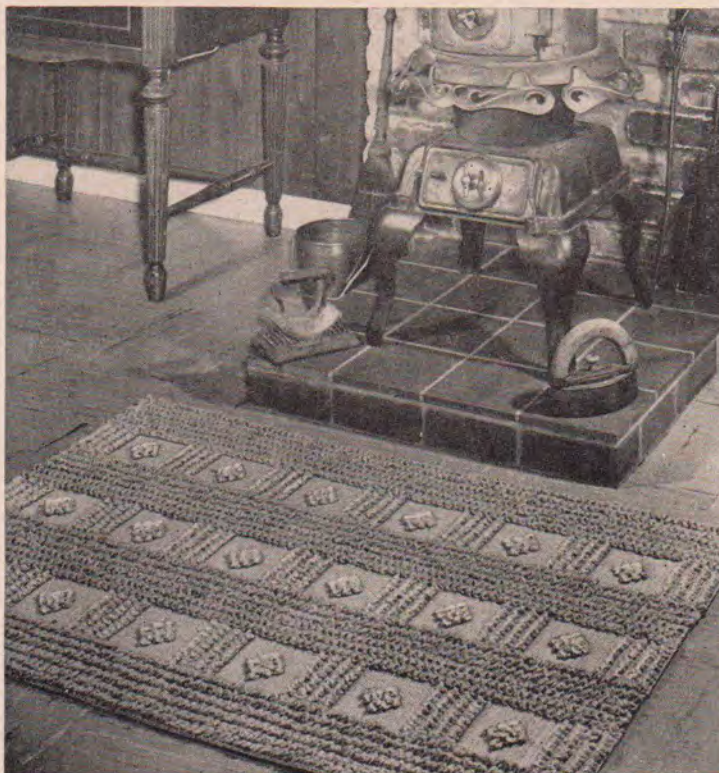
Make 15 Blocks and sew tog. 3 x 5, alternating direction of rows in Blocks crosswise and lengthwise of rug. Sew Blocks tog. into rows; then sew the rows tog. going thru one lp of each st and being careful to exactly match corners.

Edge—3 sc in Dk. Brown in one corner, sc in each sc around, with 3 sc in each corner. Join. Ch 1, turn. **ROW 2**—Sl st in each sc around. Fasten off. Stretch and pin rug right-side-down in true shape on a large board or table. Steam and press dry thru a cloth.

FLUFF FRINGE—Wind 2 strands Dk. Brown 7 times around a ½" card. Cut at one edge. Using a long strand threaded to a dull-pointed needle, take a small stitch thru edge of rug, drawing end down to 1½". Take a 2d st in same st, leaving a loop between sts. Slip a group of strands thru loop, pull the strand down tightly and tie in hard, double knot. Cut ends even with tuft. Repeat in next 4th st to right. Rub with hand to fluff fringe. Tie fringe between Blocks and around edge of rug.

MATERIALS—Lily Cotton Rug Yarn,

"Design by Texture" CROCHETED RUG NO. 3 "SIMPLE LINES"



Art. 241:—33-sks; or Lily Rug Worsted, Art. 71:—89-sks. with crochet hook size H-6.

Size—In Lily Rug Yarn, 40"x60", slightly smaller in Rug Worsted.

BAND—Ch 19, sc in 2d ch from hook, * draw out lp ½" long, Y O and draw thru long lp, insert hook in single back strand of long lp, Y O and draw thru, Y O and draw thru the 2 lps on hook (Knot St made). Make a 2d Knot St (Knot St Lp made). Sc in next 2 ch. Repeat from * 7 times. Make another Knot St Lp, sc in end ch. Ch 1, turn. **ROW 2**—Sc in last sc, (hold next Knot St Lp down in front, sc in next 2 sc between Lps) 8 times, hold next Lp down in front, sc in end sc. Ch 1, turn. **ROW 3**—Sc in 18 sc. Ch 1, turn. **ROW 4**—Repeat Row 3. **ROW 5**—Sc in last sc, (a Knot St Lp, sc in next 2 sc) 8 times, a Knot St Lp, sc in end sc. Ch 1, turn. Repeat from Row 2 twice (4 rows of Knot St Lps). Repeat Row 2 again, * then repeat Row 3 six times. **ROW 21**—Sc in 9 sc, a Knot St Lp, sc in remaining 9 sc. Ch 1, turn. **ROW 22**—Sc in 9 sc, hold Knot St Lp down in front, sc in remaining 9 sc. Ch 1, turn. **ROW 23**—Sc in 7 sc, (a Knot St Lp, sc in next 2 sc) twice, a Knot St Lp, sc in remaining 7 sc. Ch 1, turn. **ROW 24**—Sc in 7 sc, (hold Lp down, sc in 2 sc between Lps) twice, hold Lp down, sc in 7 sc. Ch 1, turn. **ROW 25**—Sc in 5 sc, (a Knot St Lp, sc in next 2 sc) 4 times, a Knot St Lp, sc in 5

sc. Ch 1, turn. **ROW 26**—Sc in 5 sc, (hold Lp down, sc in 2 sc between Lps) 4 times, hold Lp down, sc in 5 sc. Ch 1, turn. Repeat Rows 23, 24, 21 and 22; repeat Row 3 six times, then Row 5. Repeat from Row 2 five times, then repeat from Row 2 to * again—completing the 7th 4-row band of Knot St Lps.

Edge—Working down long side of Band, make (sc in 5 rows, sk next row) repeated across to corner. Ch 1, turn. **ROW 2**—Sc in last sc, (a Knot St Lp, sc in next 2 sc) repeated across to corner, ending with only 1 sc. Ch 1, turn. **ROW 3**—Sc in last sc, (hold Knot St Lp down in front, sc in next 2 sc between Lps) repeated across, ending with sc in end sc. Ch 1, turn. **ROW 4**—Sc in each sc across. Ch 1, turn. **ROW 5**—Repeat Row 4. Repeat Rows 2, 3, 4, 5, 2 and 3. Fasten off. Repeat Edge on other side of Band.

Make 3 Bands. Sew tog. going thru one lp of each sc.

SIDE BORDER—Starting with wrong-side-up, repeat Rows 4, 5, 2 and 3 of "Edge" three times on each long side of rug. Across ends make a row of sl sts, holding edge in tightly. Stretch and pin rug right-side-down in true shape on a large, padded board or table. Steam and press dry thru a cloth. This design can be made into a larger or room-size rug by increasing the length of Bands in pattern, and by making more Bands.

CROSS STITCH NEEDLEPOINT RUG NO. 4



"Queen Mary"

MATERIALS—Lily Rug Worsted, Art. 71:—7-sks. Yellow, 5-sks. Tan, 3-sks. Dk. Brown, 2-sks. Red and 1-sk. each Maroon, Rose Pink, Emerald Green, Lt. Green, Royal Blue and Lt. Blue. Lily Foundation, Art. 145-NP—size 27"x 40".

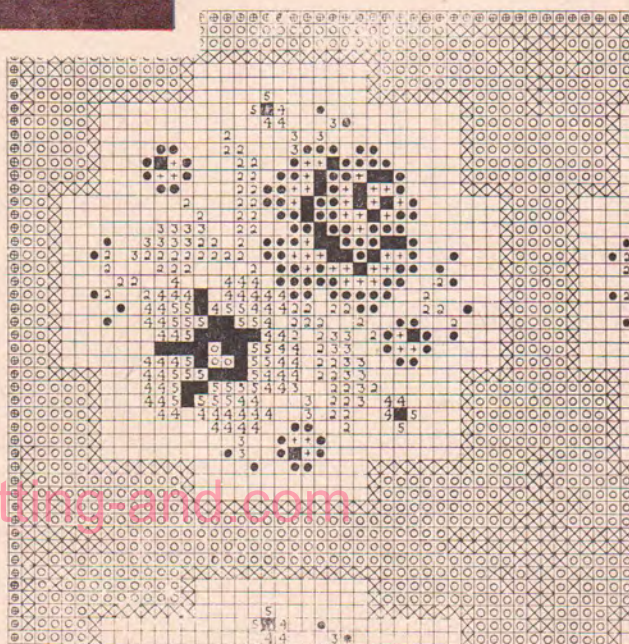
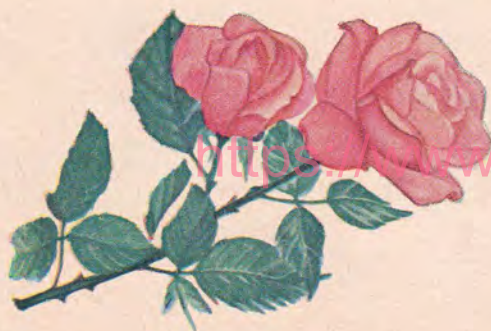
The rug foundation is marked in squares, each representing a cross stitch. Symbols are placed in squares corresponding to color symbols listed on side of rug. Squares without symbols are to be worked in Yellow background color.

Always work 1st half of all crosses in one direction, then work the 2d half in opposite direction, using one strand of yarn threaded to a large needle. Do not pull yarn too tightly in order to insure full coverage of canvas.

Rug can be made as large as desired by sewing 2 or more foundations together. In this case, omit the Dk. Brown border row on sides which are to be joined. Embroider and hem each section, then overcast tog. on wrong side, matching pattern exactly.

Stretch and pin rug right-side-down in true shape on a padded table or board. Steam and press dry thru a cloth.

- | | |
|-------------------|-----------------------|
| ○ - TAN | 4 - ROYAL BLUE |
| ● - RED | 5 - LT. BLUE |
| ■ - MAROON | X - DK. BROWN |
| + - ROSE PINK | ⊙ - DK. BROWN BORDER |
| 2 - EMERALD GREEN | ∴ - YELLOW BACKGROUND |
| 3 - LT. GREEN | |



ROUND RUG IN CROCHETED NEEDLEPOINT NO. 5

"Radiance Rose"

MATERIALS—Lily Rug Worsted, Art. 71:—7-sks. Pink, 28-sks. Lt. Green and 1-sk. each Emerald Green, Maroon, Dusty Rose and Rose Pink; or Lily Cotton Rug Yarn, Art. 241:—3-sks. Peach, 11-sks. Lt. Green and 1-sk. each Emerald Green, Wine, Dusty Rose and Salmon Rose.

Crochet hook size H-6. Size — 35".

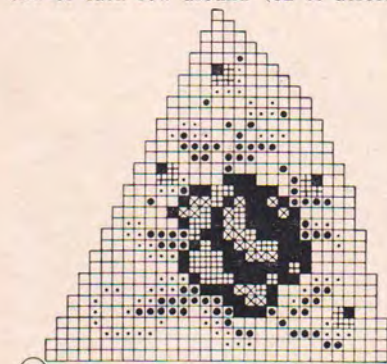
CENTER—In Pink (or Peach), ch 2, 6 sc in 2d ch from hook, sl st in 1st sc. Ch 32, sk last ch, sc in remaining 31 ch, sl st in next sc on ring. Ch 1, turn. **ROW 2**—Sk sl st, sc in next 31 sc. Ch 1, turn. **ROW 3**—Sc in each sc of last row. Ch 1, turn. **ROW 4**—Sk last sc, sc in each remaining sc. Ch 1, turn. **ROW 5**—Repeat Row 4. Ch 1, turn. * Repeat Rows 4 and 3 once and Row 4 twice. Repeat from * twice (thru Row 17). Repeat Row 4 eight times (thru Row 25). **ROW 26**—Sk last sc, sc in each sc across to 3d from end, draw up a lp in each of 2 end sc, Y O and draw thru all 3 lps on hook (a 2-sc decrease). Ch 1, turn. **ROW 27**—Sk sc-decrease, sc in each remaining sc. Ch 1, turn. Repeat Rows 26 and 27 twice (thru Row 31). Sk last sc, a sc-decrease in 2 end sc. ** Ch 1, turn, sc in sc-decrease, sc in end of each row down to center (31 sc in row), sl st in next sc on ring. Ch 1, turn. Beginning with Row 2, repeat five times to complete circle (6 triangles), ending final section at **. Fasten off. Sew 1st and last sections tog.

BORDER—Sc in Pink (or Peach) in end of Row 1 of one section, sc in end of each row around (32 sc across

each section, 192 sc in row). Sl st in 1st sc. Fasten off. **ROW 2**—Sc in Lt. Green in same sc, sc in next 2 sc, 2 sc in next sc (a widening), (sc in next 3 sc, 2 sc in next sc) repeated around (48 widenings). Sl st in 1st sc. **ROW 3**—Ch 2, turn, dc in back lp of sl st, dc in back lp of each st around to 2d from end. Holding back the last lp of each dc on hook, make 2 dc in end st, Y O and draw thru all 3 lps on hook (a Cluster made). Sk 1st ch-2, sl st in both lps of 1st dc. Ch 2, turn. **ROW 4**—Y O twice, insert hook in back lp of sl st and down at back into remaining lp of st directly below in previous row, Y O and draw thru these 2 lps, (Y O and draw thru 2 lps) 3 times (tr completed). In same way, make a tr thru back lp of each dc and down at back thru remaining lp of st directly below in previous row. When drawing yarn thru 1st 2 lps on hook,

pull up tightly to give ribbed effect. Sk 1st ch 2, sl st in both lps of 1st tr. **ROW 5**—Repeat Row 3. **ROW 6**—Repeat Row 4, making * 19 tr, then widen in next st by making 2 tr thru same top and bottom lps. Repeat from * around (12 widenings). Sk 1st ch-2, sl st in both lps of 1st tr. **ROW 7**—Repeat Row 3. **ROW 8**—Repeat Row 4 but widen in every 12th st. Repeat Row 3. **ROW 11**—Repeat Row 4 but widen in every 13th st. Repeat Row 3. **ROW 12**—Repeat Row 4 but widen in every 21st st. Repeat Row 3. **ROW 14**—Repeat Row 4 but widen in every 14th st. Repeat Row 3. **ROW 16**—Repeat Row 4 but widen in every 22d st. Repeat Row 3. **ROW 18**—Ch 1, turn and repeat Row 1 except make sc instead of tr. **ROW 19**—* Ch 5, sk 3 sc, sc in both lps of next 2 sc. Repeat from * around (69 lps). **ROW 20**—7 sc in each lp. Join

(Cont'd. on Page 7)



- CENTER OF RUG
- - LT. GREEN
 - - EMERALD GREEN
 - - WINE
 - - DUSTY ROSE
 - - ROSE PINK

<https://www.knitting-and.com>

"Design by Applique"
Nursery Rug No. 6

*"Mary's
Little
Lamb"*

MATERIALS—Lily Cotton Rug Yarn, Art. 241:—13-sks. Lt. Blue, 2-sks. Delft Blue, 3-sks. Dk. Blue and 2-sks. White. Crochet hook size H-6. Size—25"x40".

CENTER—Starting at one short end with Lt. Blue, ch 58. **ROW 1**—Y O, insert hook in 3d ch from hook and draw a lp thru, Y O, insert hook in next ch and draw a lp thru, Y O and draw thru 5 lps on hook (a group st made). * Y O, insert hook in same ch where last lp was drawn thru, and draw a lp thru, Y O, insert hook in next ch and draw a lp thru, Y O and draw thru 5 lps on hook (another group st made). Repeat from * across (55 group sts). Hdc in same end ch. Ch 1, turn. **ROW**

2—Y O, draw up a lp in last hdc, Y O, draw up a lp in next group st, Y O and draw thru 5 lps on hook. * Y O, draw up a lp in same group st, Y O, draw up a lp in next group st, Y O and draw thru 5 lps on hook. Repeat from * across (55 group sts). Hdc in same end st. Repeat Row 2 thru Row 80. Use right side of Row 1 as right side of rug. Ch 1, turn. **Border**—3 sc in last hdc, * sc in next 54 sts, 3 sc in end st, sc in next row down long side, (2 sc in next row, sc in next 3 rows) repeated across, * 3 sc in corner. Repeat from * to *. Sl st in 1st sc. Ch 1, sc in same sc. **ROW 2**—* Make hdc, dc, tr, dtr, tr, dc and hdc all in back lp of next (corner) sc. In both lps, sc in next sc, (hdc in next st, dc and 2 tr in next, tr and dc in next, hdc in next, sc in next) repeated across. Repeat from * around. Sl st in 1st sc. Fasten off. Hereafter pick up only the back lp of each sc. **ROW 3**—Turn, 3 sc in Delft Blue in center dtr at one corner, * sc in next 3 sts, sk sc between shells, sc in next 3 sts, 3 sc in next (center) tr. Repeat from * around, except at corners, make 5 sc in center dtr. End with 2 sc in 1st corner, sl st in 1st sc. Ch 1, turn. **ROW 4**—3 sc in one

lp of sl st, sc in next 4 sc, * sk 2 sc in angle, sc in next 3 sc, 3 sc in next (center) sc, sc in next 3 sc. Repeat from * around, with 4 sc up each side and 5 sc in center sc of each corner scallop. End with 2 sc in 1st corner, sl st in 1st sc. Fasten off. **ROW 5**—Turn, 3 sc in Dk. Blue in one lp of center sc at one corner, sc in next 5 sc. Repeat Row 4 from *, except make 5 sc up each side and 5 sc in center sc of each corner scallop. ** Ch 1, turn and make another row around with one more sc on each side of corner scallops than in previous row. Repeat from ** twice. Fasten off.

LAMB—Body—Starting at tail end, ch 8 in White, sc in 2d ch from hook, * draw out lp $\frac{1}{2}$ " long, Y O and draw thru long lp, insert hook in single back strand of long lp, Y O and draw thru, Y O and draw thru 2 lps on hook to make sc (Knot St made). Make a 2d Knot St (Knot St Lp made). Sc in next 2 ch. Repeat from * twice. A Knot St Lp, sc in same end ch. Ch 1, turn. **ROW 2**—Sc in last sc, * hold next Knot St Lp down in front, sc in next 2 sc between Lps. Repeat from * twice. Hold next Lp down, 2 sc in end sc. Ch 1, turn. **ROW 3**—Sc in last sc, (a Knot St Lp, sc in next 2 sc) 3 times, (a Knot St Lp, sc in next sc) twice. Ch 1, turn. **ROW 4**—Sc in last sc, hold next Knot St Lp down in front, sc in next sc between Lps, (hold next Lp down, sc in 2 sc between Lps) 3 times, hold next Lp down, 3 sc in end sc. Ch 1, turn. **ROW 5**—Sc in last sc, (a Knot St Lp, sc in next 2 sc) 4 times, (a Knot St Lp, sc in next sc) twice. Ch 1, turn. **ROW 6**—Sc in last sc, hold next Knot St Lp down, sc in next sc, (hold next Lp down, sc in next 2 sc) 4 times, hold next Lp down, sc in end sc. Ch 1, turn. Repeat Rows 5 and 6 eight times. **ROW 23**—Sk last sc, sc in next sc, (a Knot St Lp, sc in next 2 sc) 3 times, a Knot St Lp, sc in next sc, sl st in next. Ch 2, turn. **ROW 24**—(Hold next Lp down, sc in next 2 sc) 3 times, hold next Lp down, sc in end sc. Ch 1, turn. **ROW 25**—Sk last sc, sc in next sc, a Knot St Lp, sc in next 2 sc, (a Knot St Lp, sc in next sc) twice, sl st in next sc. Ch 2, turn. **ROW 26**—Hold next Lp down, sc in next sc, hold next Lp down, sc in next 2 sc, hold next Lp down, sc in end sc. Fasten off.

Tail—In White, ch 2, (sc, a Knot St Lp, sc) all in 2d ch from hook. Ch 1, turn. **ROW 2**—Sc in last sc, hold Lp down, 2 sc in end sc. Ch 1, turn. **ROW 3**—Sc in last sc, (a Knot St Lp, sc in next sc) twice. Ch 1, turn. **ROW 4**—Sc in last sc, (hold Lp down, sc in next sc) twice. Ch 1, turn. Repeat Rows 3 and 4 three times. Fasten off.

Leg—In White, ch 4, sc in 2d ch from hook, (a Knot St Lp, sc in next ch) twice. Ch 1, turn. Repeat Rows 4 and 3 of Tail 4 times, and Row 4 again. Fasten off. Make 4 Legs. Sew 2 by 1st Row to final row of Body. Sew other 2 to opposite bottom corner of Body. Sew (Cont'd. on Page 14)



<https://www.knitting-and.com>

"Design by Texture"

BATH ROOM RUG NO. 7

"Good... from every angle"

MATERIALS—Lily Cotton Rug Yarn, Art. 241:—14-sks. desired color; or Lily Rug Worsted, Art. 71:—38-sks. desired color. Crochet hook size H-6. Size—24" x 38".

BLOCK—Ch 15, sk last ch, sc in next 13 ch, sl st in end ch, * ch 14, sk last ch, sc in next 13 ch, sl st in same st with 1st sl st. Repeat from * twice. Ch 1, turn. **ROW 2**—Sk sl st and last sc, * sc in both lps of next 11 sc, 3 sc in end sc, 3 sc in 1st st on other side, sc in next 11 sts, sk 1st sc on next bar and repeat from * around. End with sl st in 1st sc. Fasten off. Hereafter pick up only the back lp of each sc throughout. **ROW 3**—Sk next 11 sc. Mark the next (corner) sc. Turn, sc in marked sc, * sc in next 11 sc down to angle, sk 2 sc in angle, sc in next 12 sc out to center sc at next corner (24 sc in row). Mark right side of this row for right side of rug. Ch 1, turn. **ROW 4**—Sc in each sc to 2d from angle (1 less than last row), sk 2 sc in angle, sc in each remaining sc. Ch 1, turn. Repeat Row 4 nine times (4 sc in final row). Ch 1, turn, sk last 3 sc, sl st in end sc. Fasten off. Turn, sc in center sc at another corner and repeat from * in Row 3 until all 4 corners are filled out. Make 3 Blocks and tack tog. cornerwise into a straight row for Center.

FILL-IN BLOCK—With right-side-up, sc in side corner of middle block, sc in each row and st down to angle (26 sc), 26 sc across side of next (end) Block to corner. Ch 1, turn and repeat Row 4 twenty-four times (4 sc in final row). Ch 1, turn, sk 3 sc, sl st in end sc. Fasten off. Repeat in 3 other sps between Blocks.

CORNER BLOCK—With right-side-up, make 54 sc across one side of an end Block and adjoining Fill-in Block. Ch 1, turn. **ROW 2**—Sk last sc, sc in each remaining sc across to 3d from end, draw up a lp in next sc, draw up a lp in end sc, YO and draw thru the 3 lps on hook (a decrease). Ch 1, turn. Repeat this row 24 times (4 sc in final row). Ch 1, turn, sk 3 sc, sl st in end sc. Fasten off. Repeat on other 3 corners.

To fill out triangle in middle of each long side, make 26 sc across each Fill-in Block. Ch 1, turn. **ROW 2**—Sk last sc, sc in each remaining sc across to 2d from angle, sk 2 sc in angle, sc in each remaining sc across to 3d from end, a sc-decrease in 2 end sc. Repeat this row 11 times (4 sc in final row).

Ch 1, turn, sk 3 sc, sl st in end sc. Fasten off.

BORDER—With right-side-up, make 2 sc in one corner, (sc in next 3 rows, 2 sc in next row) repeated around with 3 sc in each corner. End with one more sc in 1st corner, sl st in 1st sc. Ch 1, turn. **ROW 2**—2 sc in sl st, sc in each sc around, making 3 sc in center sc of each 3-sc group at corners. End with one more sc in 1st corner, sl st in 1st sc. Ch 1, turn. Repeat Row 2 11 times. Fasten off.

FRINGE—Sc in corner, (ch 2, sk 2 sc, sc in both lps of next 2 sc) repeated across end. Fasten off. Cut 5 strands, each 7½" long. Double these strands to make a loop. Insert hook up from

underneath thru a ch-2 lp and draw loop thru. Draw loose ends thru loop. Make a fringe in each ch-2 loop across. Trim ends evenly. Complete opposite end to correspond.

Stretch and pin rug right-side-down in true shape on a large, padded board or table. Steam and press dry thru a cloth.

POM PON—Wind 2 strands of yarn 15 times around a ½" card. Cut at one edge. Tie a 7" strand around center of strands. Holding tie strands, rub pom to fluff into a ball. Make 3. Tie one in center of each Center Block.

"RADIANCE ROSE"

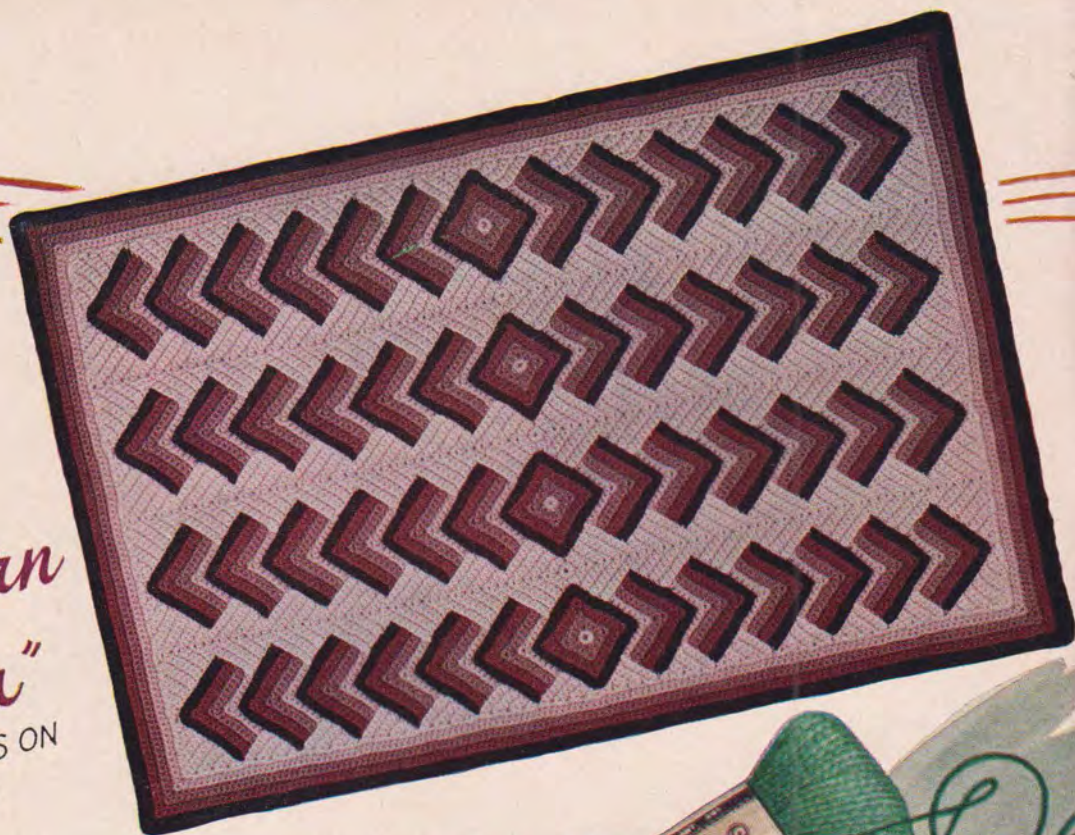
(Cont'd. from Page 5)

and fasten off.

EMBROIDERY—Following Chart, embroider design in cross stitches in each section of Center, using one strand of yarn threaded to a dull-pointed needle. Stretch and pin rug right-side-down on a large, padded board or table. Steam and press dry thru a cloth.



*"Modern
Color"*
DIRECTIONS ON
PAGE 10



"Harmony"
DIRECTIONS ON
PAGE 14



"Weddi"
DIRECTION



"Poppy Garden"

DIRECTIONS ON
PAGE 10



"Ring"

DIRECTIONS ON PAGE 11



"Confetti Color"

DIRECTIONS ON
PAGE 3

<https://www.knitting-and.com>

"Design by Color" **Crocheted Rug No. 8** **"Modern Color"**

ILLUSTRATION ON PAGE 8

MATERIALS—Lily Rug Worsted, Art. 71:—15-sks. Pink, 9-sks. Maroon, 8-sks. Old Rose, and 7-sks. each Rose Pink and Black; or Lily Cotton Rug:—6-sks. Salmon Rose, 4-sks. Wine, and 3-sks. each Dusty Rose, Rose Pink and Black.

Crochet hook size H-6.

Size—26" x 39" in wool. Slightly larger in cotton.

COLORED BAND—Center Square—Starting at center in Rose Pink, ch 2, 8 sc in 2d ch from hook, sl st in 1st sc. Cut 3" long. Hereafter pick up only the back loop of each sc. **ROW 2**—Turn, in Old Rose (or Dusty Rose) make 2 sc in 1 sc, (sc in next sc, 3 sc in next) 3 times, working over yarn end left from last row, sc in next 2 sc, sl st in 1st sc. Ch 1, turn. **ROW 3**—2 sc in sl st, (sc in next 3 sc, 3 sc in next sc) 3 times, sc in next 4 sc, sl st in 1st sc. Cut 3" long. **ROW 4**—Turn, in Maroon (or Wine) make 2 sc in center sc of a 3-sc group at one corner, (sc in next 5 sc, 3 sc in next sc) 3 times, working over yarn end left from last row, sc in next 6 sc, sl st in 1st sc. Ch 1, turn. **ROW 5**—2 sc in sl st, (sc in next 7 sc, 3 sc in next sc) 3 times, sc in next 8 sc, sl st in 1st sc. Cut 3" long. **ROW 6**—Turn, in Black make 2 sc in center sc at one corner, (sc in next 9 sc, 3 sc in next sc) 3 times, working over yarn end left from last row, sc in next 10 sc, sl st in 1st sc. Fasten off on right side of this row. Mark the wrong side of Black row as right side of rug. **ROW 7**—In this row pick up only the front loop of each sc. Without turning and starting at center sc at one corner, sk 7 sc along one side of square, sc in Rose Pink in next 5 sc, * 3 sc in next (center) sc at corner, sc in next 5 sc. Ch 1, turn. **ROW 8**—Picking up only the back lp of each sc again, sc in 6 sc, 3 sc in next (corner) sc, sc in 6 sc. Cut 3" long. **ROW 9**—Turn and working over Rose Pink end, make sc in Dusty Rose in each sc of last row with 3 sc in center sc at corner. Ch 1, turn. **ROW 10**—Sc in each sc of last row with 3 sc in center sc at corner. Cut 3" long. Repeat Rows 9 and 10 in Maroon (or Wine), then repeat Row 9 in Black and fasten off on right side of Black row. **ROW 14**—Without turning, sk 1st 7 sc in Black row. Picking up only the front lp of each sc, make sc in Rose Pink in next 5 sc. Repeat from * in Row 7 five times, ending final (6th) triangle with Black row. **2d Half**—With Black row of Center Square right-side-up, work 2d Half of Band out from opposite side of Center Square, repeating from Row 7. Make 4 Colored Bands. **PLAIN BAND**—Starting in center, in Pink (or Salmon Rose), ch 2, 8 sc in

2d ch from hook, sl st in 1st sc. Hereafter pick up only the back loop of each sc. **ROW 2**—Ch 1, turn, sc in sl st, sc in next sc, 3 sc in next sc, sc in next 2 sc. Ch 1, turn. **ROW 3**—Sc in each sc around, making 3 sc in center sc of 3-sc group at corner. Ch 1, turn. Repeat Row 3 five times. Fasten off on right side of last row. Mark the wrong side of last row for right side of rug. **ROW 9**—In this row pick up only the front loop of each sc. With last row right-side-up, sk 1st 7 sc, sc in front lps of next 2 sc, 3 sc in next (corner) sc, sc in next 2 sc. Ch 1, turn. Repeat from Row 3 thru 6 blocks, then repeat again thru 6 rows on 7th block. Ch 1, turn. **ROW 7**—Sc in 6 sc, draw up lps in next 2 sc, Y O and draw thru 3 lps on hook (sc-decrease made). Ch 1, turn. **ROW 8**—* Sk sc-decrease, sc in each remaining sc. Ch 1, turn. **ROW 9**—Sc in each sc to 3d from end, sc-decrease in 2 end sc. Ch 1, turn. Repeat from * once. Ch 1, turn, sk last sc, sc in next 2 sc. Ch 1, turn, sc-decrease in 2 sc. Fasten off. Turn, sk one (center) sc on last full row of 7th block, sl st in next sc, ch 1, sc in remaining 7 sc. ** Ch 1, turn, sc in each sc to 3d from end, sc-decrease in 2 end sc. Ch 1, turn, sk decrease, sc in each remaining sc across. Repeat from ** twice. Fasten off. With Band wrong-side-up, make sc in same sc on center ring at end of Row 2. Sc in next sc, 3 sc in next, sc in next 2 sc. Ch 1, turn. Repeat from Row 3 to complete 2d half of Band. Make 3 Bands.

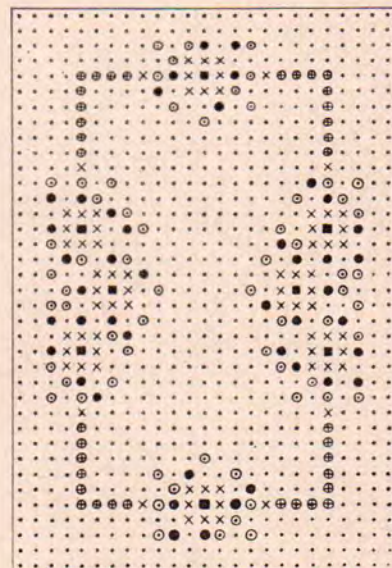
HALF-BLOCK BAND—Starting in center, in Pink (or Salmon Rose), * ch 2, sc in 2d ch from hook. Ch 1, turn. Hereafter pick up only the back lp of each sc. **ROW 2**—2 sc in sc. Ch 1, turn. **ROW 3**—Sc in last sc, 2 sc in next sc. Ch 1, turn. **ROW 4**—2 sc in last sc, sc in each remaining sc. Ch 1, turn. **ROW 5**—Sc in each sc across with 2 sc in end sc. Ch 1, turn. Repeat Rows 4 and 5 again (7 sc in Row 7). Without cutting yarn, repeat from * thru 7 triangles. * Ch 1, turn, sk last sc, sc in each remaining sc. Ch 1, turn, sc in each sc across to 3d from end, sc-decrease in 2 end sc. * Repeat from * to * once. Ch 1, turn, sk last sc, sc in 2 sc. Ch 1, turn, sc-decrease in 2 sc. Fasten off. **2d Half**—With straight edge of row of triangles on right, points on left side, make sl st in starting st at base of 1st triangle, ch 2, sc in 2d ch from hook. ** Ch 1, turn, 2 sc in sc. Ch 1, turn, 2 sc in last sc, sc in end sc. Ch 1, turn, sc in 2 sc, 2 sc in end sc. Ch 1, turn. Repeat Rows 4, 5 and 4 of 1st Half of this Band. Fasten off. Without turning, make sc in front lp of 1st sc at start of last row. Then picking up only the back loops again, repeat from ** thru 7 triangles. Ch 1, turn, sc in 5 sc, sc-decrease in 2 end sc. Repeat from * to * twice. Ch 1, turn, sk last sc, sc in next sc. Fasten off. Make 2 Half-Block Bands. Sew 4 Colored Bands and 3 Plain Bands tog., alternately. Pin tog., first, lap. (Cont'd. on Page 15)

FLUFF RUG NO. 9 **"Poppy Garden"**

ILLUSTRATION ON PAGE 9

MATERIALS—Lily Rug Worsted, Art. 71:—2-sks. each Emerald Green and Brown, 3-sks. each Scarlet and Lt. Green, and 30-sks. Yellow; or Lily Cotton Rug Yarn, Art. 241:—1-sk. each Emerald Green and Med. Brown, 2-sks. each Red and Lt. Green, and 16-sks. Yellow.

Lily Foundation Art. 145/0, size 27" x 40". Lily Pom and Tuft Form, Art. 421. **WORSTED YARN RUG**—To make tufts on Lily Pom and Tuft Form, cut 4 tie strings 5" long. Place these in the 2d slot from the post and in every 4th slot thereafter. Wind 2 strands of yarn 3½ times around Form, making 14 strands. Tie the 5" tie-strings and cut tufts apart.



Following Chart, tie Yellow tufts on small dots of background, tie Brown tufts on the large circles of border lines, Lt. Green tufts on the dotted circles, Emerald Green tufts on the large dots and Scarlet tufts on the crosses. On the large square dot in center of each flower, tie a mixed tuft:—Using Yellow tie strings, wind one strand Brown 3 times around Form. Then wind one strand Yellow 4 times around Form on top of Brown (14 strands). Tie and cut apart.

When completed, turn the edge of canvas back twice and hem down.

COTTON YARN RUG—Cut tie-strings 7" long. Wind 2 strands 5½ times around Form (22-strands). Repeat as for Worsted Yarn Rug. For the mixed tufts, wind 2 strands Brown twice around Form, then wind 2 strands Yellow 3 times around Form on top of Brown (20 strands). Tie and cut apart.

Pom Pon Rug No. 11

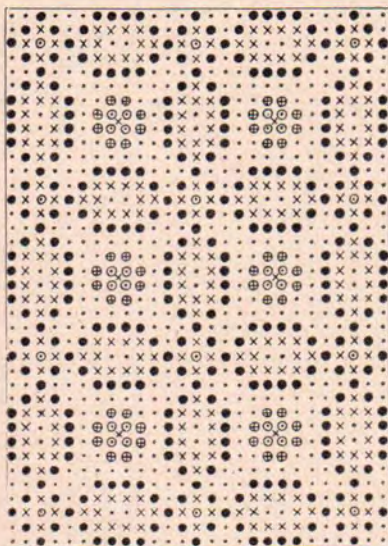
"Wedding Ring"

ILLUSTRATION ON PAGE 8

MATERIALS—Lily Cotton Rug Yarn, Art. 241:—4-sks. Natural, 5-sks. Emerald Green, 6-sks. Lt. Green and 1-sk. each Salmon Rose and Red; or Lily Rug Worsted, Art. 71:—8-sks. White, 10-sks. Dk. Green, 13-sks. Lt. Green and 2-sks. each Rose Pink and Scarlet. Lily Rug Foundation Art. 145/R size 27" x 40".

Lily Pom and Tuft Form, Art. 421.

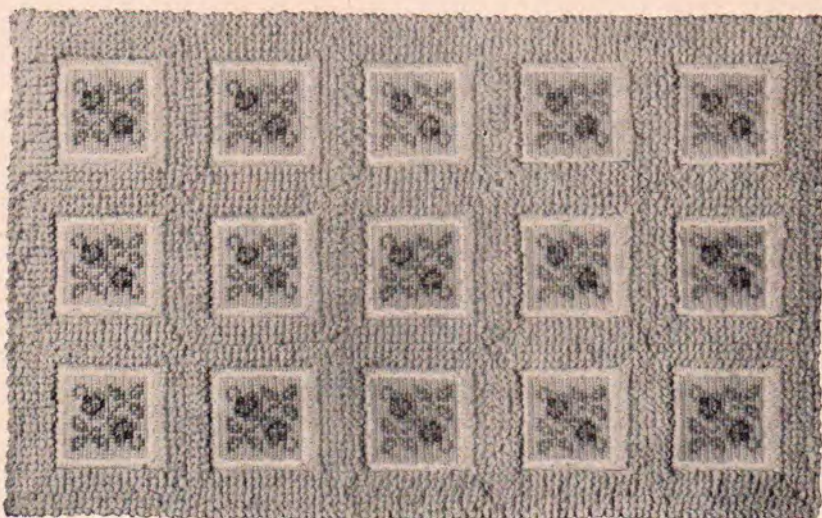
COTTON YARN RUG—To make Poms, cut 8 tie-strings 7 inches long. Using Lily Pom and Tuft Form and beginning with the 1st slot next to the post, place a tie-string in every other slot. Wind 2 strands $5\frac{1}{2}$ times around Form, making 22 strands. Tie the 7 inch tie-strands and cut Poms apart. Holding tie-strands firmly, close to top of Pom, rub it around and around on the canvas foundation to fluff into a round ball.



Following Chart, tie Lt. Green Poms on small dots of background, tie Emerald Green Poms on the large dots, Natural Poms on the crosses, Salmon Rose Poms on large circles and Red Poms on dotted circles. On the large cross in center of each large flower, tie a Half-Pom made by winding one strand of Natural $5\frac{1}{2}$ times around Form (11 strand Half-Poms).

When completed, turn the edge of canvas back twice and hem down.

WORSTED YARN RUG — Cut tie-strings 6 inches long. To make Poms, wind 2 strands $4\frac{1}{2}$ times around Form, making 18 strands. Repeat as for cotton yarn rug, tying White Poms on crosses, Rose Pink Poms on circles and Scarlet Poms on dotted circles.



Crocheted Rug No. 12

"Dramatic Texture"

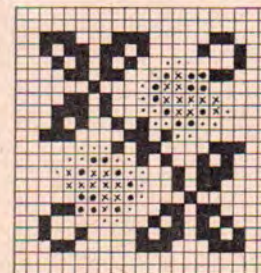
MATERIALS—Lily Rug Yarn, Art. 241 (70-yd. skeins):—28-sks. Rose Pink, 1-sk. each Med. Green, Maroon, Dusty Rose and Lt. Dusty Rose, and 2-sks. Cream. Crochet hook size 0.

Size—25" x 42".

BLOCK—In Rose Pink, ch 23, 22 sc on chain. (Ch 1, turn, 22 sc) repeated thru Row 22. Ch 1, turn, 2 sc in last sc, sc in next 20 sc, 3 sc in end sc, (make 20 sc across next side, 3 sc in corner) repeated around. End with 1 sc in 1st corner, sl st in 1st sc. Fasten off. Turn, 2 sc in Cream in center sc at one corner, * (a long sc over next sc, inserting hook down at base of sc into row below) twice, sc in next 2 sc. Repeat from * 4 times, long sc over next 2 sc, 3 sc in next (corner) sc. Repeat from * around. End with 1 sc in 1st corner, sl st in 1st sc. Fasten off. **Border**—Turn and make 2 sc in Rose Pink in center sc at one corner, * make 24 sc across side, 3 sc in next (corner) sc. Repeat from * around. End with 1 sc in 1st corner, sl st in 1st sc. **ROW 2**—Ch 1, turn, 1 sc in sl st, * pull out lp on hook $\frac{1}{2}$ " long, insert hook in single back strand of long lp, yarn over and pull thru, yarn over and pull thru the 2 lps on hook, completing sc (one Knot St made). Make a 2d Knot St, sc in same corner st, sc in next sc, (make 2 Knot Sts, sc in next 2 sc) 13 times to corner, 2 Knot Sts, 1 sc in same corner st. Repeat from * around. End with 2 Knot Sts, sl st in 1st sc (15 Knot St lps on each side). **ROW 3**—Ch 1, turn, 2 sc in sl st, (hold next Knot St lp down tight in front, sc in 2 sc between lps) repeated around,

with 3 sc in 1 sc between 2 corner lps. End with 1 sc in 1st corner, sl st in 1st sc. Repeat Row 2 (17 lps on each side), Row 3, Row 2 (19 lps on each side), and Row 3. Cut 18" long and use to sew Blocks together.

With Row 22 of center square at top of Chart, embroider rose design in cross stitches on each square, using one strand threaded to a large, dull-pointed needle.



□-Dusty Rose ■-Med. Green
■-Maroon x-Lt. Dusty Rose

Make 5 Blocks and sew together into a band, going thru both lps of sc, working on back. Make 2 more bands, then sew bands together, exactly matching corners. With rug wrong-side-up, make sc in one corner and repeat Border Row 2 around rug, beginning at *. Be careful that all Knot St lps are directly above those in previous rows. Repeat Rows 3 and 2 twice, then repeat Row 3 again, except make sl sts instead of sc. Fasten off.

Stretch and pin rug right-side-down in true shape on a padded board or table. Steam and press dry thru a cloth.

"Trailing Vine"



MATERIALS—Lily Rug Worsted, Art. 71:—18-sks. Rose Pink, 14-sks. Pink, 3-sks. Lt. Green, 2-sks. Dk. Green and 1-sk. each Emerald Green, Royal Blue, Lt. Blue, Maroon, Old Rose, Brown and Yellow; or Lily Cotton Rug Yarn, Art. 241:—7-sks. Salmon Rose, 5-sks. Peach and 1-sk. each Dk. Green, Emerald Green, Lt. Green, Dk. Blue, Lt. Blue, Wine, Dusty Rose, Brown and Yellow.

Lily Foundation Art. H-42 size 27" x 40". "BLUENOSE" Hooker.

Stretch burlap taut on rug frame. Set Hooker to make $\frac{1}{2}$ " loops. Follow instructions included with Hooker carefully.

GAUGE—Leave 2 threads of burlap between loops and 2 threads of burlap between the rows of loops. First, hook line between border and center section in Dk. Green, leaving only one thread of burlap between lps. Next make the flower:—Hook 4 or 5 lps in Maroon (or Wine) close tog. in center circle of each flower.

No. 1—Flowers—Hook outside line of each petal in Royal (or Dk. Blue), other 2 lines of each petal in Lt. Blue.
No. 2—Flowers—Hook outside line of each petal in Maroon (or Wine), inside and center lines of each petal in Old Rose (or Dusty Rose).

No. 3—Flowers—Hook outside line of each petal in Brown, other 2 lines of each petal in Yellow.

Outline leaves and make stems in Lt. Green. Make center line in leaves in Emerald Green. Hook a single row of loops around center circle in each flower, between petals and around outside of petals, in background color,—Pink (or Peach) for center section, Rose Pink (or Salmon Rose) on border section. Go around leaves and stems with one row of background color. Fill in Center with straight rows crosswise in Pink (or Peach).

Border—Using Rose Pink (or Salmon Rose), hook corners first:—Starting at Dk. Green line, hook along outside edge of border to corner, turn corner and hook up to next Dk. Green line and cut. Continue with parallel lines until corner is filled out in a miter. Hook the other border sections lengthwise of each section, starting at outside edge.

Cut burlap $1\frac{1}{2}$ " outside edge rows, turn back twice $\frac{1}{8}$ " outside base of edge row, and hem down on back. Stretch and pin right-side-down in true shape on a large board or table. Steam and press dry thru a cloth. Paint back with shellac to hold loops firm. Line back with canvas or burlap to increase wear.

ROUND HOOKED RUG NO. 14

"Spring Garden"



MATERIALS—Lily Rug Worsted, Art. 71:—14-sks. Lt. Blue, 9-sks. Royal Blue, 2-sks. each Yellow and Emerald Green, and 1-sk. each Lt. Green, Maroon, Old Rose, Rose Pink and Pink; or Lily Cotton Rug Yarn:—5-sks. Lt. Blue, 4-sks. Dk. Blue, and 1-sk. each Yellow, Emerald Green, Lt. Green, Wine, Dusty Rose, Salmon Rose and Peach.

Lily Foundation Art. H-31 size 30" round. "Bluenose" Hooker.

Stretch burlap taut on rug frame. Set Hooker to make $\frac{1}{2}$ " loops. Follow instructions included with Hooker carefully. Arrangement of colors is indicated on stamped foundation by symbols and key letters as given on Chart.

GAUGE—Leave 2 threads of burlap between loops and 2 threads of burlap between the rows of loops. Hook flowers first, outlining each color section first, then filling in. Make the ribs in leaves in Lt. Green, bal. in Emerald Green. Make the center of small flowers in Emerald Green, center lines in Maroon and the petals in Yellow. Go around all motifs with one row and fill in all spaces in center flower design, in Lt. Blue background color. Outline both sides of wide border first, then fill in solid, with Royal (or Dk. Blue). Make the border scrolls of 3 parallel rows of Royal (or Dk. Blue). Hook 2 rows of Lt. Blue between scrolls and wide border. Go around inside of scrolls with a row in Lt. Blue, then fill in all the background in straight rows in Lt. Blue.

Cut burlap $1\frac{1}{2}$ " outside edge rows, turn back twice $\frac{1}{8}$ " outside base of edge row, and hem down on back. Stretch and pin right-side-down in true shape on a large board or table. Steam and press dry thru a cloth. Paint back with shellac to hold loops firm. Line back with canvas or burlap to increase wear.

"MARY'S LITTLE LAMB"

(Cont'd. from Page 6)

final row of Tail to top corner of Row 1 of Body.

Head—In White, ch 2, 3 sc in 2d ch from hook. Ch 1, turn. **ROW 2**—Sc in last sc, a Knot St Lp, sc in next 2 sc, a Knot St Lp, sc in same end sc. Ch 1, turn. **ROW 3**—Sc in last sc, hold next Lp down, 2 sc in next 2 sc, hold next Lp down, 2 sc in end sc. Ch 1, turn. **ROW 4**—Sc in last sc, (a Knot St Lp, sc in next 2 sc) twice, hold next Lp down, 2 sc in end sc. Ch 1, turn. **ROW 5**—Sc in last sc, (hold next Lp down, sc in next 2 sc) twice, hold next Lp down, 2 sc in end sc. Ch 1, turn. **ROW 6**—Sc in last sc, (a Knot St Lp, sc in next 2 sc) 3 times, a Knot St Lp, sc in same end sc. Ch 1, turn. **ROW 7**—Sc in last sc, (hold next Lp down, sc in next 2 sc) 3 times, hold next Lp down, 2 sc in end sc. Ch 1, turn. **ROW 8**—Sc in last sc, (a Knot St Lp, sc in next 2 sc) 4 times, a Knot St Lp, sc in same end sc. Ch 1, turn. **ROW 9**—Sc in last sc, hold next Lp down, sc in next 2 sc, (hold next Lp down, sc in next 2 sc in next) twice, hold next Lp down, 2 sc in end sc. Ch 1, turn. **ROW 10**—Sc in last sc, (a Knot St Lp, sc in next 2 sc) 6 times, a Knot St Lp, sc in same end sc. Ch 1, turn. **ROW 11**—Sc in last sc, (hold next Lp down, sc in next 2 sc) 6 times, hold next Lp down, sc in end sc. Fasten off.

Ear—In White, ch 6, sc in 2d ch from hook, * hdc in next ch, 2 dc in next, hdc in next, * 3 sc in end ch. Repeat from * to * on other side of ch. Sc in end st. Fasten off. Make two. Sew to top corners of Head.

Foot—In Dk. Blue, ch 6, sk last 4 ch, dc in next 2 ch. Fasten off. Make 4. Sew by last dc to end of each Leg.

Nose—In Dk. Blue, ch 3, sk last ch, sc in next ch, hdc in next. Fasten off. Sew to Row 1 of Head.

Eye—In Dk. Blue, ch 4, dc in 4th ch from hook, ch 3, sl st in same ch. Fasten off. Make two. Sew close to each side of Head between 3d and 4th rows of Lps.

Long Base Line—In Dk. Blue, ch 60, * sk last ch, sc in next 2 sc, hdc in each ch to 3d from end, sc and sl st in 2 end ch. Fasten off.

Short Base Line—Start with ch 30 and repeat Long Line from *. Make two. Sew on rug as in illustration on page 6. Sew Lamb above Long Line.

Flower—In Dk. Blue, ch 2, 8 sc in 2d ch from hook. Sl st in 1st sc. Fasten off. **ROW 2**—Sc in White in 1 sc, * ch 5, sl st in 2d ch from hook, sc, hdc and sc in bal. of ch, sc in next sc on ring. Repeat from * 7 times. Fasten off. Make 6 Flowers.

Leaf—In Delft Blue, * ch 10, sk last ch, sl st in next ch, hdc in next, dc in next 2 ch, hdc in next ch, sl st in

next. Repeat from * 3 times. Sl st in next ch-3, ** ch 7, sk last ch, sl st, hdc, 2 dc. hdc and sl st in bal. of ch-7, sl st in next ch-3. Repeat from ** twice. Fasten off. Make 4 Leaves.

Stem—In Delft Blue, ch 34, sk last ch, sl st in next 25 ch, ch 35, sk last ch, sl st in next 30 ch, ch 14, sk last ch, sl st in next 13 ch, sl st in next 4 ch, sl st in remaining 8 ch. Fasten off. Make 2 Stems.

Following illustration, sew 3 Flowers, 2 Leaves and 1 Stem on each end of rug above Short Base Lines. Sew Stem wrong-side-up on left end.

Stretch and pin rug right-side-down in true shape on a large, padded board or table. Steam and press dry thru a cloth.

"Design by Applique" Crocheted Rug No. 10

"Harmony"

COLOR ILLUSTRATION

ON PAGE 8

MATERIALS—Lily Rug Worsted, Art. 71:—15-sks. Rose Pink, 27-sks. Pink, and 1-sk. each Old Rose, Lt. Blue, Royal Blue and Lt. Green; or Lily Cotton Rug Yarn, Art. 241:—6-sks. Salmon Rose, 10-sks. Peach, and 1-sk. each Lt. Blue, Dk. Blue, Lt. Green, and Dk. Peach or Dusty Rose. Crochet Hook size H-6. Size—25" x 42" in Worsted Yarn (as illustrated),—slightly larger in Cotton Yarn.

1st HALF—In Rose Pink (or Salmon Rose), ch 92, sk last 4 ch, hdc in next 2 ch, sc in next ch, sl st in next, * sc in next, hdc in next, hdc and dc in next ch, ** dc in next 2 ch, dc and hdc in next ch, hdc in next ch, sc in next, sl st in next. Repeat from * 8 times and from * to ** once more. Ch 1, turn. **ROW 2**—Hereafter pick up only the back loop of each sc throughout. Make 2 sc in last hdc, * sc in next 3 sts, sk sl st in angle, sc in next 3 sts, 2 sc in next dc, sc in next 2 dc, 2 sc in next dc. Repeat from * across, ending with 2 sc in end ch-4. Drop and let hang. Do not cut. Mark the right side of this row as right side of rug. **ROW 3**—Draw Pink (or Peach) thru lp on hook (turning ch-1 made), turn and working over starting end of Pink, make 2 sc in last sc, * sc in next 3 sc, sk 2 sc in angle, sc in next 3 sc, 2 sc in next sc, ** sc in next 2 sc, 2 sc in next sc. Repeat from * across, ending row at **. Ch 1, turn. **ROW 4**—2 sc in last sc and repeat Row 3 beginning at *. Repeat Row 4 twice (4 rows in Pink). Drop and let hang. Do not cut. **ROW 5**—Draw up Rose Pink from 5th row below and thru

lp on hook, turn and make 2 rows. Drop this color. **ROW 9**—Draw up Pink from 3d row below and thru lp on hook, turn and make 4 rows. Continue, alternating 2 rows Rose Pink with 4 rows Pink, thru 9th band in Rose Pink (counting Rows 1 and 2 as 1st band). Cut Rose Pink and fasten off on back. **End Band**—Draw up Pink thru lp on hook, turn, sc in last sc, * hdc in next 2 sc, holding back the last lp of each dc, make dc in next 4 sc, Y O and draw thru the 5 lps on hook (a Cluster-decrease made), hdc in next 2 sc, sc in next 4 sc. Repeat from * across, ending with sc in end sc. Ch 3, turn. **ROW 2**—Work following rows thru both lps. Make dc in last sc, dc in next 6 sts, * (dc in next 2 sc) made into a Cluster-decrease, dc in next 16 sts. Repeat from * across, ending with 6 dc, a 2-dc Cluster in end sc. **ROW 3**—Ch 3, turn, dc in last dc and in each dc across. Do not work into end ch-3. Repeat Row 3 seven times. Fasten off.

2d HALF—With rug wrong-side-up and working into other side of starting ch, join Rose Pink to 1st ch, ch 3, hdc in same ch, hdc in next ch, sc in next, sl st in next. Repeat Row 1 beginning at *. Continue, repeating 1st Half. At end, do not fasten off.

EDGE—Ch 1, turn, 3 sc in last dc, * sc in each dc across, 3 sc in end st. Continue down long side with 2 sc in each dc-row, 1 sc in each sc-row, * 3 sc in corner. Repeat from * to * and join. Ch 1, turn. **ROW 2**—Sl st in each sc around. Fasten off.

FLOWER—In Old Rose (or Dk. Peach or Dusty Rose), ch 2, 7 sc in 2d ch from hook, sl st in back lp on 1st sc, * ch 4, holding back the last lp of each dc, make 4 dc in 4th ch from hook (Cluster made), ch 3, sl st in Cluster for a p, ch 4, sl st at base of Cluster, sl st in next sc on ring. Repeat from * 6 times. Fasten off. Turn wrong-side-up. In Pink (or Peach), make a French Knot at base of each petal and one in center, using one strand wrapped 3 times around needle. Make 3 flowers for each end of rug.

SMALL FLOWER—In Lt. Blue, ch 2, 6 sc in 2d ch from hook, sl st in 1st sc, (ch 3, sl st in same sc, sl st in next sc) 6 times. Fasten off. Make a Dk. Blue Knot at base of each petal, wrapping one strand once around needle. Make 6 Flowers for each End Band.

LEAF STEM—In Lt. Green, ch 34, * a 4-dc Cluster in 4th ch from hook, a ch-3 p, ch 4, sl st at base of Cluster. * Fasten off. **Leaf**—In Lt. Green, ch 4 and repeat from * to * in Leaf Stem, ch 1 and fasten off. Make 12 for each End Band.

Following illustration, sew flowers and leaves on End Bands, sewing leaves and stems wrong-side-up.

Stretch and pin rug right-side-down in true shape on a large, padded board

or table. Steam and press dry thru a cloth.



FLUFF FRINGE—Wind 2 strands Rose Pink 7 times around a $\frac{1}{2}$ " card. Cut at one edge. Using a long strand threaded to a dull-pointed needle, take a small st thru edge of rug, drawing end down to $1\frac{1}{2}$ ". Take a 2d st in same st, leaving a lp between sts. Slip a group of strands thru lp, pull the strand down tightly and tie in a hard, double knot. Cut ends even with tuft. Repeat in next 4th st to right around edge of rug. Also tie fringe on final band of Rose Pink next each End Band, putting a tuft between scallops and 2 tufts around each scallop. Rub fringe with hands to fluff.

MODERN COLOR NO. 8 (Cont'd. from Page 10)

ping top sc-row of each triangle over ends of rows on side of adjoining triangle. Use a strand of Pink (or Peach) and working on back, go thru only the front lp of each sc. This hides the stitches and if carefully done, no sewing will be visible on right side. Sew a Half-Block Band in same way on each long side of rug.

BORDER—With right-side-up, make 3 sc in Pink (or Peach) in one corner, (sc in next 3 rows, 2 sc in next row) repeated around, with 3 sc in each corner. Join and fasten off. Hereafter pick up only the back lp of each sc. **ROW 2**—Turn, 2 sc in Rose Pink in center sc at one corner, * sc in each sc around, making 3 sc in center sc at each corner. 1 sc in 1st corner, sl st in 1st sc. * Ch 1, turn. **ROW 3**—2 sc in sl st. Repeat Row 2 from * to *. Fasten off. Repeat Rows 2 and 3 in Dusty Rose, in Maroon and in Black.

Stretch and pin rug right-side-down in true shape on a large, padded board or table. Steam and press dry thru a cloth.

DEFINITIONS AND ABBREVIATIONS

CROCHET:

Chain Stitch (ch)—Start with a slip knot on hook. * Thread over and draw thru loop on hook. Repeat from * until ch is desired length.

Slip Stitch (sl st)—Insert hook in work, catch thread and draw thru work and loop on hook at same time.

Single Crochet (sc)—With a loop on hook, insert hook in work, catch thread and pull thru work, thread over again and draw thru the 2 loops on hook.

Half Double Crochet (hdc)—Make like dc as far as *, then thread over and draw thru all 3 loops on hook at once.

Double Crochet (dc)—Thread over, insert hook in work, catch thread and pull thru work, making 3 loops on hook. * Thread over and draw thru 2 loops, thread over and draw thru remaining 2 loops.

Treble Crochet (tr)—Thread over twice, insert hook in work, catch thread and pull thru work, making 4 loops on hook. Work off in groups of two as in dc.

Double Treble (dtr)—Thread over three times and work off as in dc, two loops at a time.

Skip (sk)

Yarn Over (Y.O.)

CROSS STITCH:

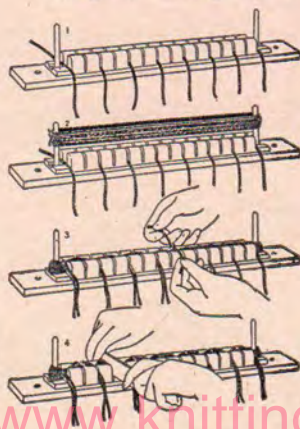
In the first row of single stitches, bring needle up at lower right hand corner; down at upper left hand corner; repeat across row. On return row, bring needle up at lower left hand corner and down at upper right hand corner. In working rows of cross stitches, work across the row from right to left forming the first slanting stitch, then work from left to right to complete the stitch.

RUG HOOKING:

With an automatic hooker or a punch needle, work from the wrong side of the rug, using the hooker to push loops through the burlap foundation. Be sure that the yarn runs freely through the needle and does not catch. Always insert needle vertically, bringing end of yarn on the right side or underside of foundation. Withdraw needle just clear of the material. Never lift needle above foundation. Just slide and insert again. In hooking, loops are formed on the right or underside of rug. If needle is accidentally raised too high, pull yarn back as it was before and make stitch over again. Keep your burlap foundation stretched tight on the rug hooking frame for best results. Although the hooked rugs illustrated on pages 12 and 13 are not clipped, you may clip yours if you prefer. This makes a soft, velvety surface. Clip with sharp scissors while the rug is still in the frame.

POMS AND TUFTS

To make tufts on the pom and tuft form, cut four tie-strings 5" long from Lily Rug Yarn. Place these in the second slot from the post, and in every fourth slot thereafter. Wind two strands of Lily Rug Yarn around the slot posts $5\frac{1}{2}$ times (22 strands), (with worsted yarn, $3\frac{1}{2}$ times making 14 strands). Press into the groove, and tie a firm single knot with each tie string. Cut through the third slot from each end first—and make one cut through the center slot. Remove end tufts from posts and cut through loop-ends with scissors.



Remove end tufts from posts and cut through loop-ends with scissors.

To make pompons, cut eight tie-strings 7" long from Lily Rug Yarn and beginning with the first slot next to the post place the tie-strings in every other slot. Loop 2 strands Lily Rug Yarn around the posts $5\frac{1}{2}$ times (22 strands) (with worsted yarn, $4\frac{1}{2}$ times, making 18 strands). Press the strands down into the groove and tie a firm single knot with each tie-string. With sharp knife cut through yarn in the groove between each tie string, cutting the two ends first. Remove, cut through end poms, and fluff up by gently hitting on table edge.

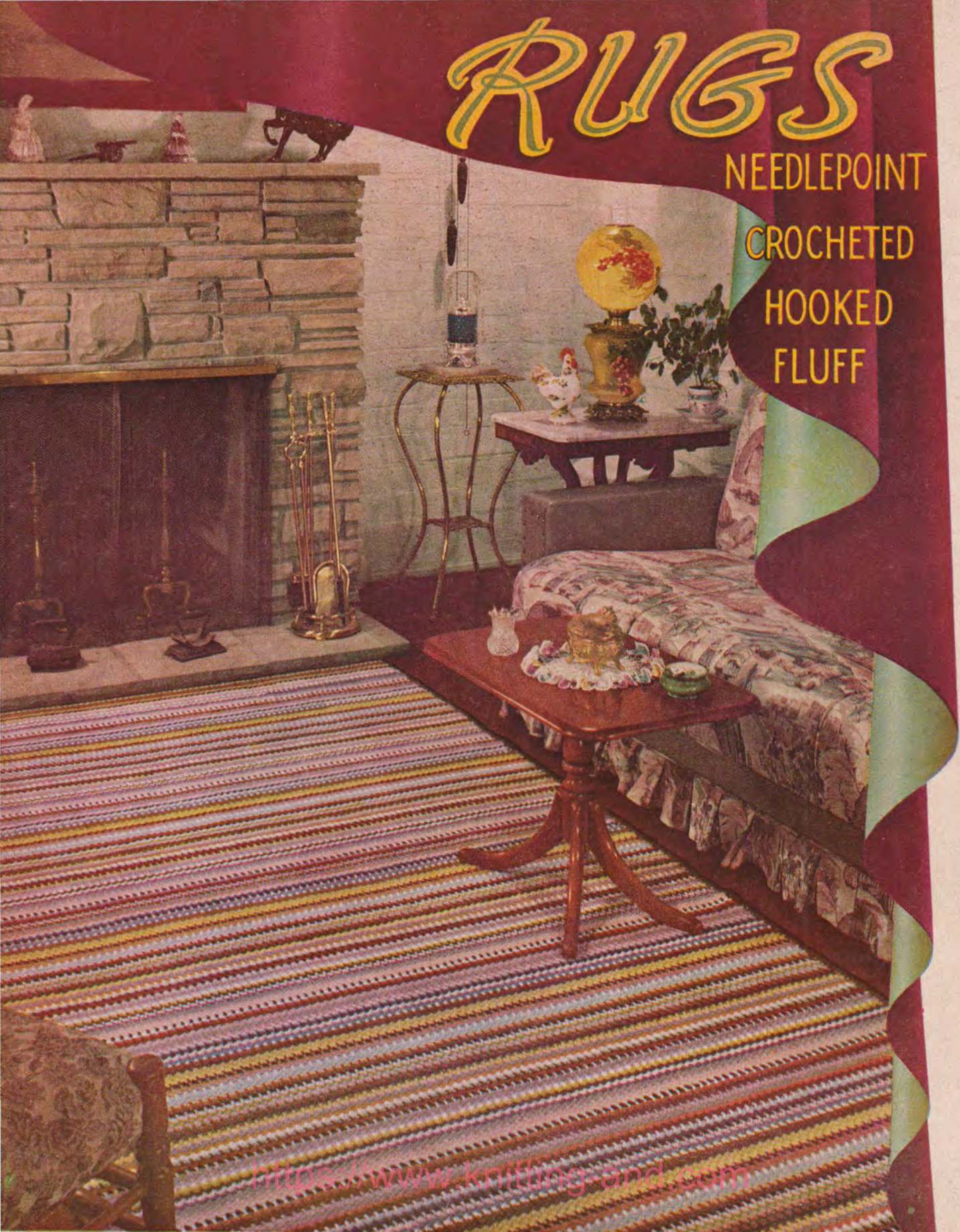
RUGS

NEEDLEPOINT

CROCHETED

HOOKE

FLUFF



<https://www.knitting-and.com>

Lily Design Book No. 54

10¢ IN U.S.A.