



Thank you

for downloading this pdf file from Knitting-and.com!

Your visits have helped keep Knitting-and.com online, providing free crafts and recipes since 1996.

There are hundreds of free patterns and crafts available and more added all the time!

Note: The pink watermark on the following pages will not show if you print this file.

Pom-Pom and FLUFF RUGS



made with
Lily 
RUG YARN



10¢

BOOK 800

<https://www.knitting-and.com>

"SHIP" TUFTED RUG

MATERIALS—Lily Fast Color Rug Yarn, Art. 241: 12 skeins Lt. Blue, 5 skeins Dk. Blue, 7 skeins Natural and 1 skein Red. Lily Foundation, Art. 145-SS, 27" x 40".

Fill in the large dots of border, waves and masts with tufts in Dk. Blue. Tie tufts in Red to the large circles on hull and pennant. Make the tufts on crosses on sails and clouds in Natural. Fill in background solidly in Lt. Blue tufts.

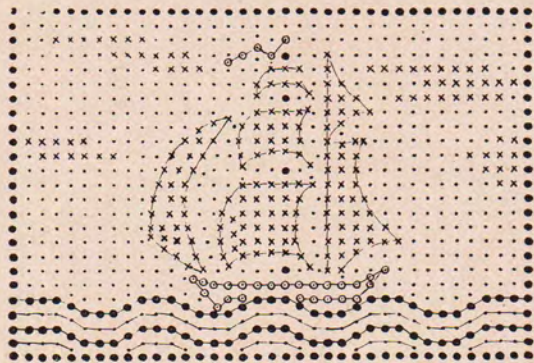
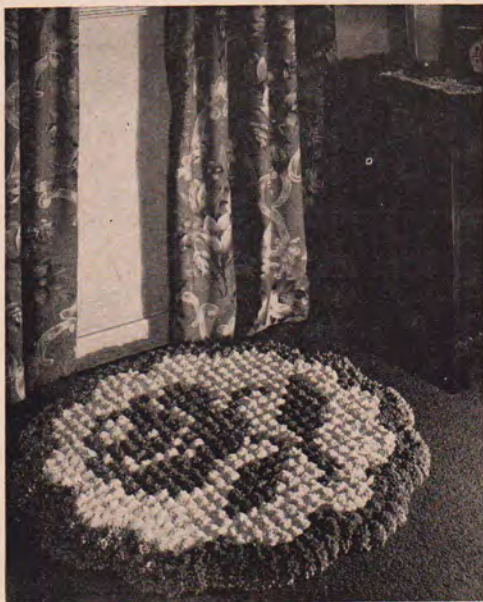


Diagram for "Ship" Rug

"Ship" Rug illustrated in color on cover



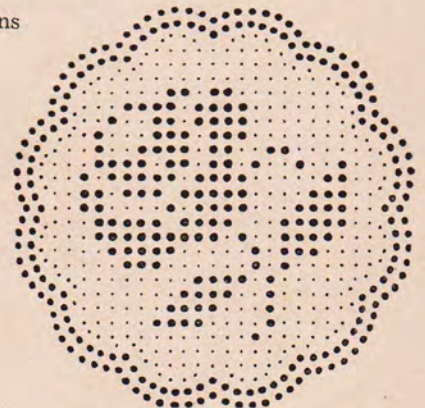
"ROSE" TUFTED RUG

MATERIALS — Lily Fast Color Rug Yarn, Art. 241: 9 skeins each Cream and Dusty Rose. Lily Foundation, Art. 146-Y, 30" round.

Fill in the large dots of design with tufts in Dusty Rose. Then cover background solidly with Cream tufts.

This rug shown in color on front cover

Diagram for "Rose" Rug



"MOSAIC"

POM PON RUG

MATERIALS — Lily Fast Color Rug Yarn, Art. 241: 9 skeins Wine, 5 skeins Dusty Rose, 3 skeins each Emerald Green and Cream, and 1 skein Lt. Green. Lily Foundation, Art. 145-CC, 27" x 40".

Fill in the large dots of border and flower with Poms in Wine. Make the stems and outline the leaves (large circles) in Emerald Green. Fill in leaves (crosses) in Lt. Green. Fill in the background with the stars in Cream and the small dots in Dusty Rose.

This rug shown in color on front cover

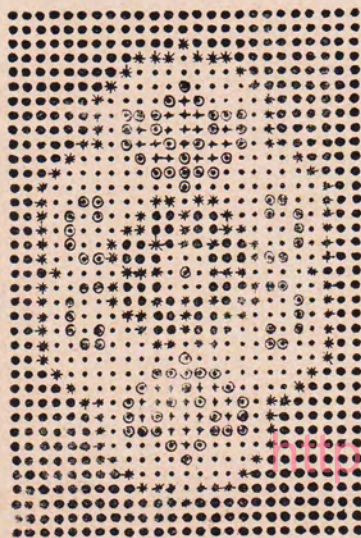


Diagram for "Mosaic" Rug



"SCOTTY" TUFTED RUG

MATERIALS—Lily Fast Color Rug Yarn, Art. 241, 9 skeins Lt. Blue, 5 skeins Black, 2 skeins Beige, 2 skeins Brown, Lily Rug Foundation, Art. 146-S, (30-inch round).

DIRECTIONS—Tuft the large dots on Scotty and border in Black. Make the dots marked with small crosses in foreground and the eye and collar of Scotty in Beige. Tuft the large circles in foreground and the nose of Scotty in Brown. Fill in small dots of sky in Lt. Blue.

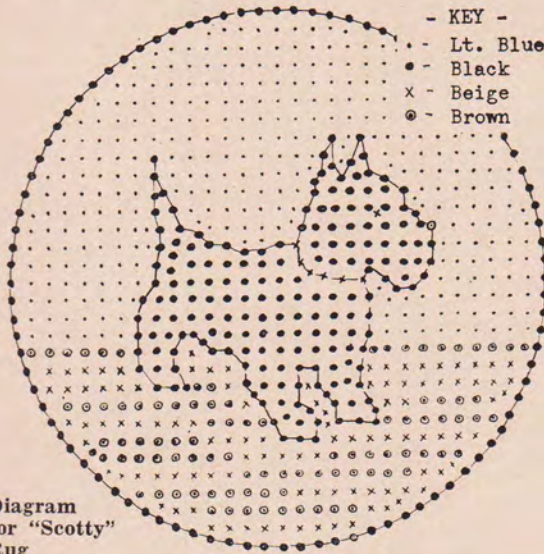


Diagram for "Scotty" Rug



Rug shown in color on Page 4

"SPRING FLOWERS" BATHROOM SET

MATERIALS—Lily Fast Color Rug Yarn, Art. 241:

FOR RUG—10 skeins Rose Pink, 1 skein Turquoise, 3 skeins Natural. Lily Foundation Art. 142-R. (22" x 30")

FOR SEAT COVER—5 skeins Rose Pink, 1 skein Turquoise, 1 skein Natural Lily Foundation, Art. 148-R.

Following diagram, tie Turquoise tassels to large dots, and tie Natural tassels to dots marked with a small cross. Fill in background with Rose Pink tassels.

TOILET SEAT COVER—Follow instructions for the tufting of rug. When tufting is finished, cut canvas $\frac{3}{4}$ inch from outside row of tufting, turn back twice and hem down. With a single of Rose Pink, work around curved edges with button hole stitches, spacing them about $\frac{3}{4}$ inch apart. With a No. H-6 crochet hook and Rose Pink yarn, join to 1st stitch at one corner, ch 4, 1 dc in next st, (ch 1, dc in next st) repeated around to other back corner. **Row 2**—Ch 3, turn, 1 dc in last 1-ch space, (ch 1, 1 dc in next 1-ch space) repeated around. Fasten off. Thread a double strand of Rose Pink thru 2d row of crochet, letting ends extend out at back of ties. Note This Rug and Seat Cover can be made with either Tufts or Pom Pons.

This Rug is also made with Pom Pons—as shown on Page 4

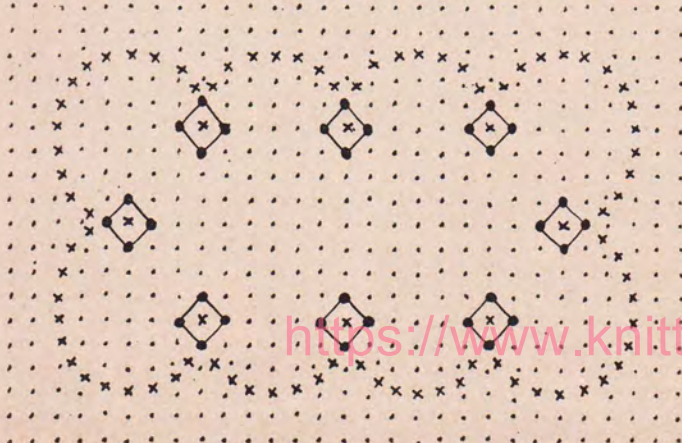


Diagram for the "Spring Flowers" Set

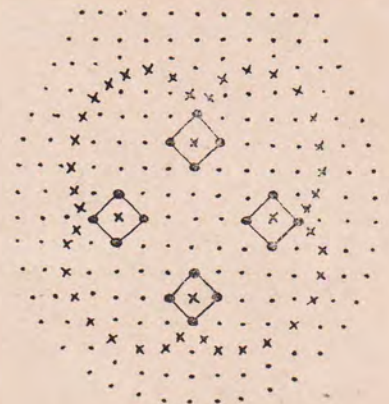


Diagram for Seat Cover



Rug shown in color on Page 4

<https://www.knitting-and.com>

"SCOTTY" TUFTED RUG

(Directions for making on Page 3)



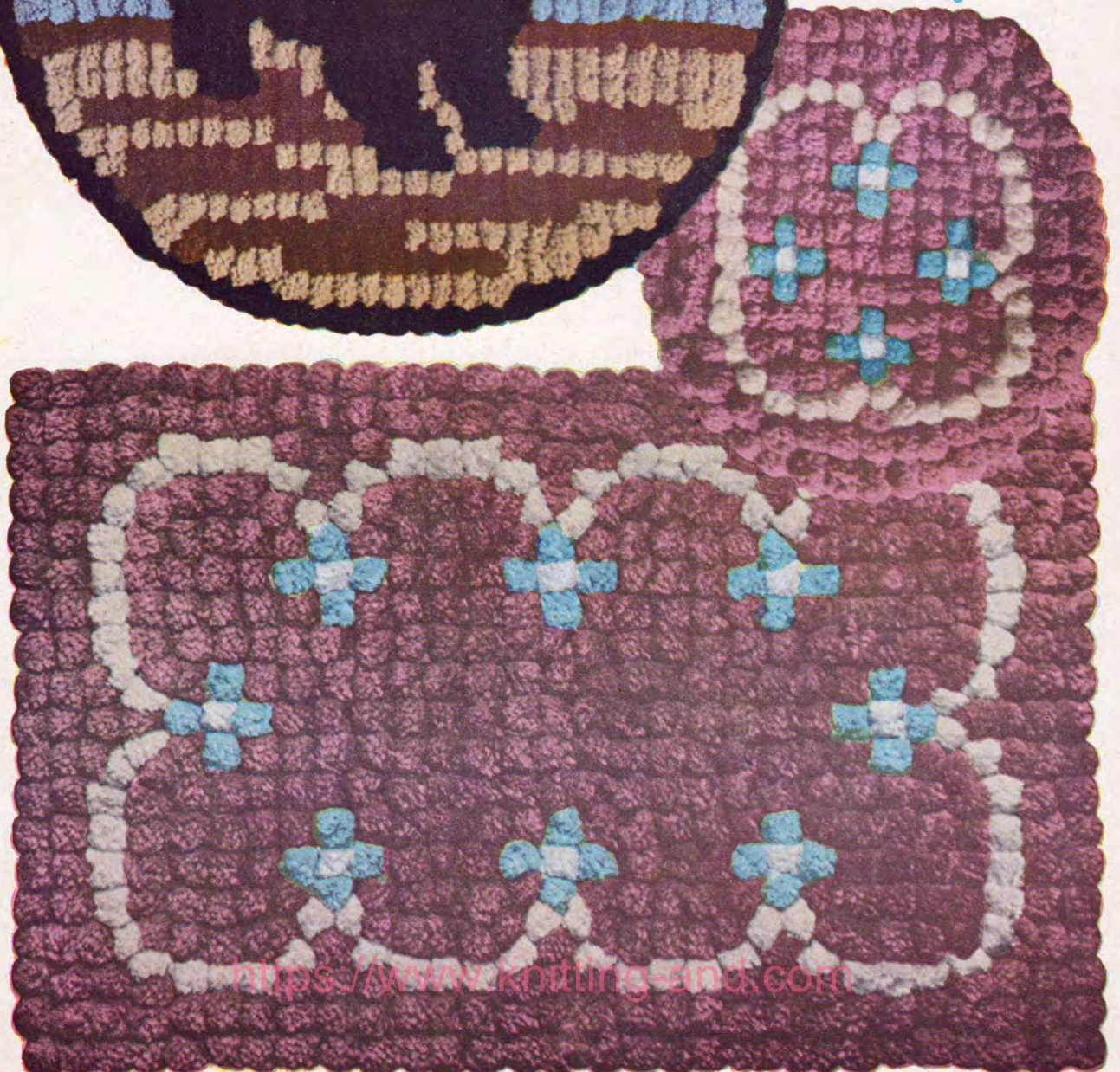
"SPRING FLOWERS"

BATH SET

(MADE WITH POM PONS)

(Directions for making
on Page 3)

Illustration of this
Rug on Page 3 shows
it made with tufts.



<https://www.knitting-and.com>

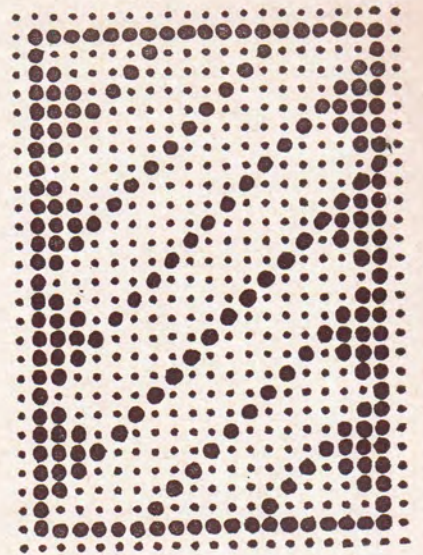
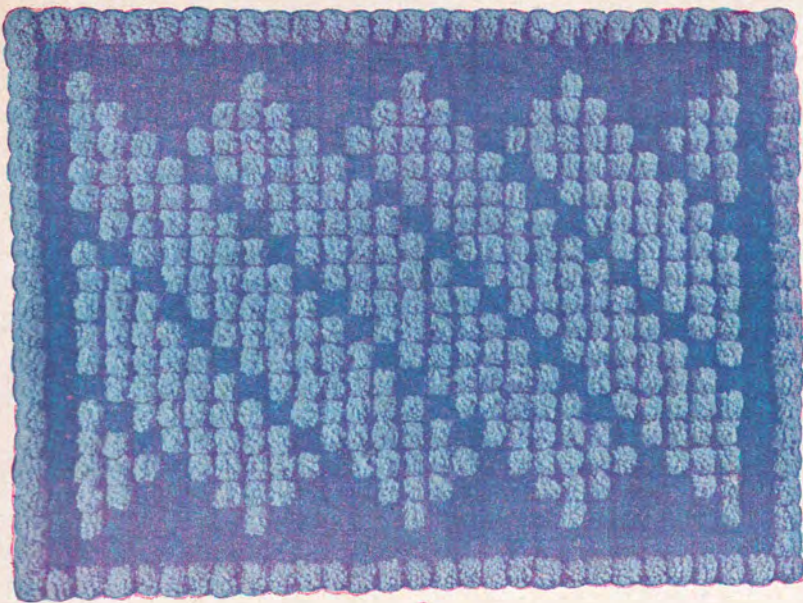


Diagram for "Simplicity Rug"

"SIMPLICITY" POM PON RUG

MATERIALS—Lily Fast Color Rug Yarn, Art. 241, 8 skeins Lt. Blue and 4 skeins Dk. Blue. Lily Foundation, Art. 142-BB, 22" x 30".

Fill in the large dots of design with Poms in Dk. Blue. Then cover background solidly with Lt. Blue Poms.



"RAINBOW" POM PON RUG

(Directions for making on Page 6)

<https://www.knitting-and.com>

"QUILT BLOCK"

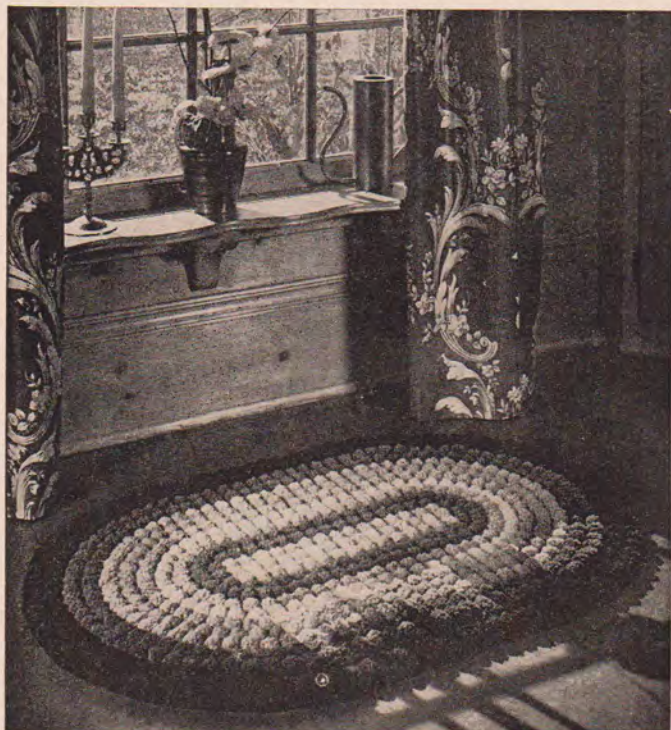
POM PON RUG

(Shown in color on Page 8)

MATERIALS—Lily Fast Color Rug Yarn, Art. 241: 4 skeins each Natural and Lt. Green, and 5 skeins Emerald Green. Lily Foundation, Art. 142-Z, 22 x 30 inches.

Fill in the large dots of design with Poms in Emerald Green, the crosses in Natural, and the small dots of background in Lt. Green.

Diagram for "Quilt Block" Rug



"RAINBOW" POM PON RUG

(Shown in color on Page 5)

MATERIALS—Lily Fast Color Rug Yarn, Art. 241: 2 skeins Orange, 1 skein Yellow, 5 skein Dk. Blue, and 4 skeins each Lt. Blue and Black. Lily Foundation, Art. 145-X, 27 x 40 inches.

Fill in the small dots with Poms in Lt. Blue, large dots in Dk. Blue, stars in Yellow, large circles in Orange, and crosses in Black.

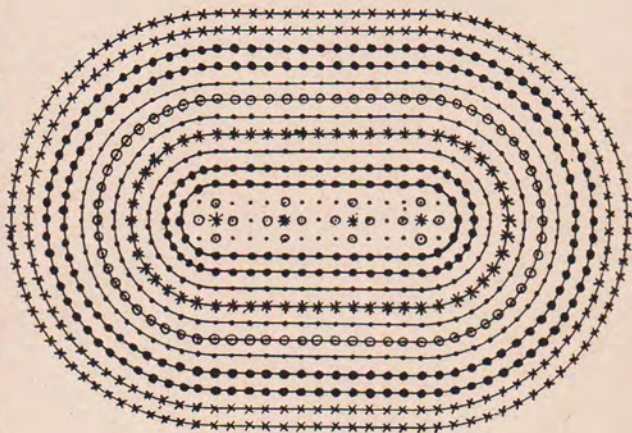


Diagram for "Rainbow" Rug

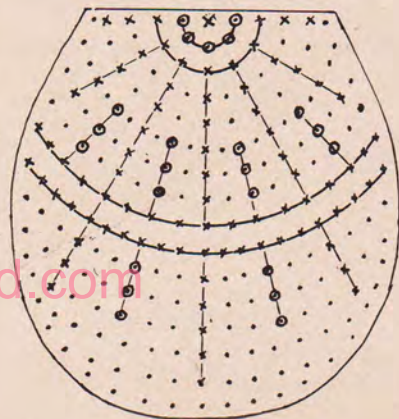
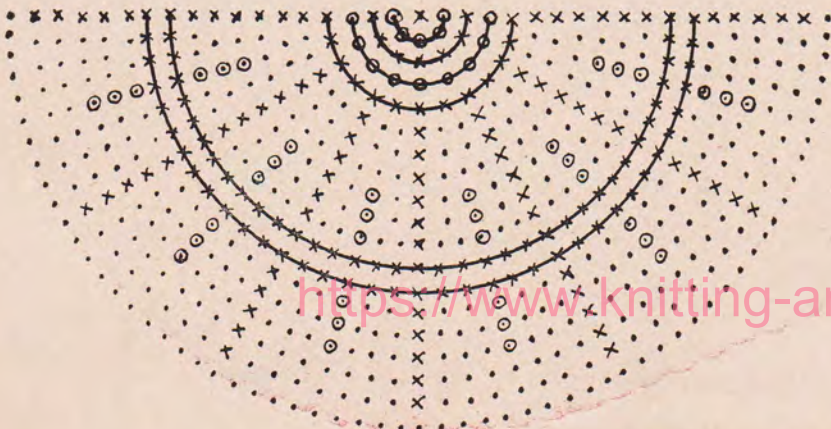


Diagram for "Fan" Bathroom Set

"INDIAN" POM PON RUG

(Shown in color on Page 9)

MATERIALS—Lily Fast Color Rug Yarn, Art. 241: 5 skeins Black, 9 skeins Gray, 2 skeins Red, and 1 skein each Natural and Dk. Blue. Lily Foundation, Art. 145-AA, 27" x 40".

Fill in the large dots with Poms in Black and the small dots of background in Gray. Make the crosses in Red, the stars in Dk. Blue, and fill in the large circles of center background in Natural.

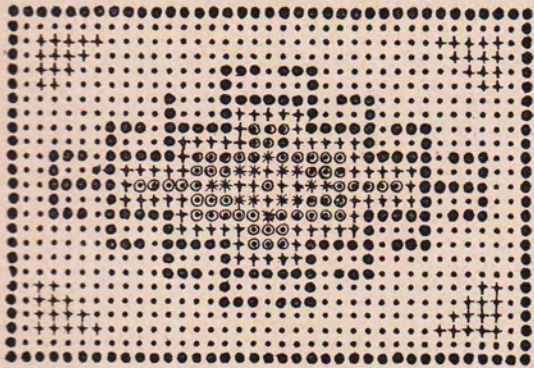
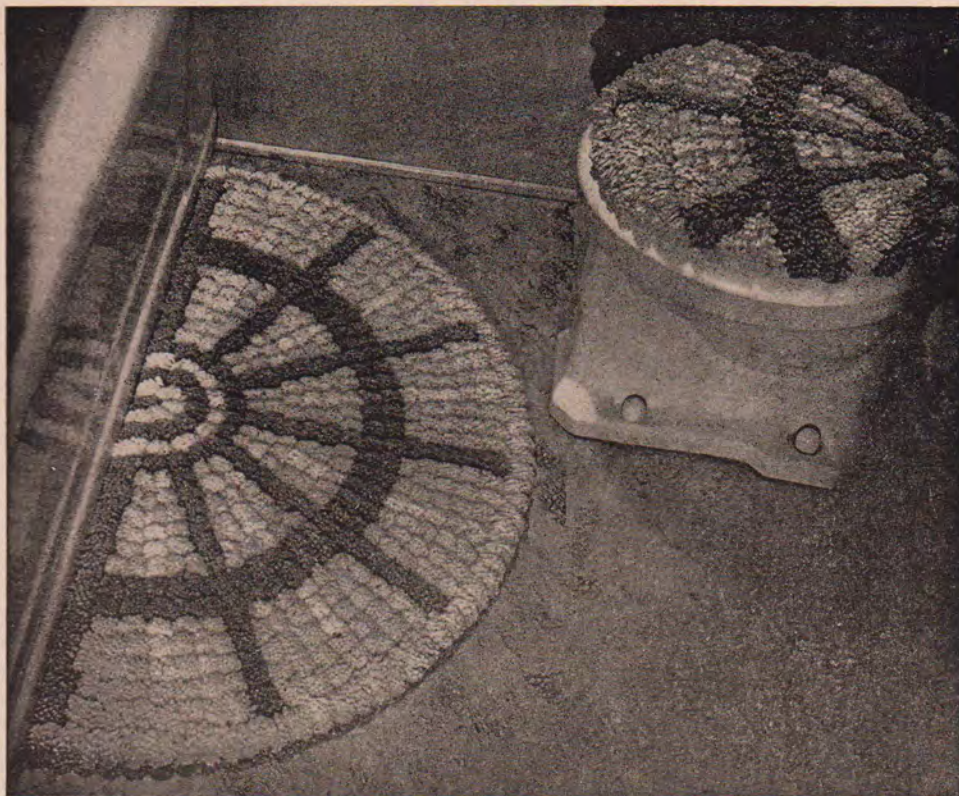
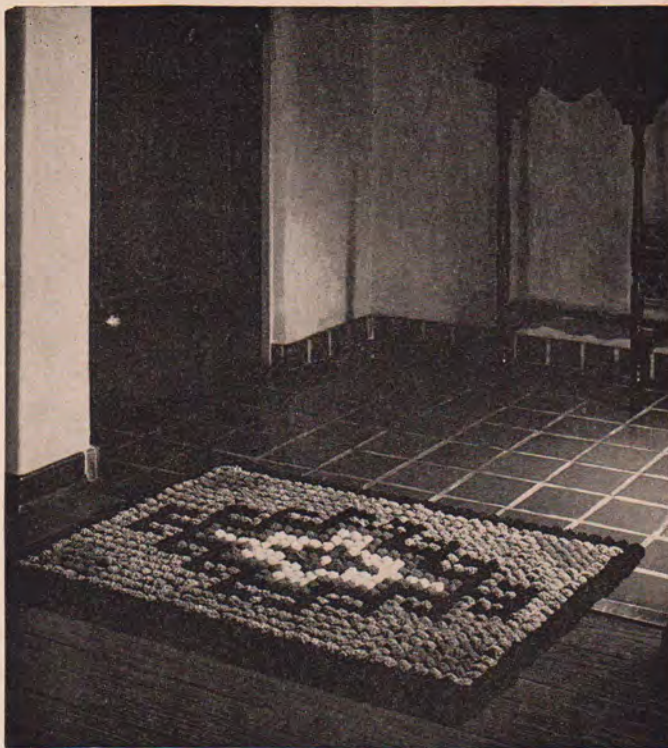


Diagram for "Indian" Rug



"FAN" DESIGN TUFTED BATHROOM SET

(Shown in color on Page 8)

MATERIALS—Lily Fast Color Rug Yarn, Art. 241:

11 skeins Peach
6 skeins Turquoise
2 skeins Natural

Lily Rug Foundation, Art. 147-U, Size 20"x40".

Lily Toilet Seat Foundation, Art. 148-U

Lily Viking Crochet Hook, Size H-6.

Lily Pom Pon and Tuft Form

This is sufficient for the Set of Rug and Seat Cover.

Tuft the dots marked with small crosses in Turquoise, large dots in Natural, and fill in the background in Peach.

SEAT COVER—When tufting is finished, turn edge of foundation back in a narrow hem under outside row of tufts. Using a single strand of Peach, work a row of buttonhole stitches over hem around curved edge, making stitches about $\frac{3}{8}$ inch apart. With crochet hook and Peach yarn, join to 1st stitch at one back corner, ch 4, 1 dc in next st, (ch 1, 1 dc in next st) repeated around to other back corner. Ch 3, turn, 1 dc in last 1-ch space, (ch 1, 1 dc in next 1-ch) repeated around. Fasten off. Run a double strand of Peach thru last row of crochet and use ends to tie cover on seat.

Rugs You Can Make in a Few Hours

. . . . and add so much charm and color to your home! These rugs are all easy to make — with Lily's Rug Yarn. Washable too. When you feel the urge to cheer up a dark corner or add a bit of fresh color in front of a favorite chair — make a rug. Nothing quite takes the place of scatter rugs in making a room "cozy" and they are so inexpensive.

When you've made your selection from the many stunning colors of Rug Yarn—spend a few pleasant hours making the rug — and then sit back and admire your handiwork.



<https://www.knitting-and.com>

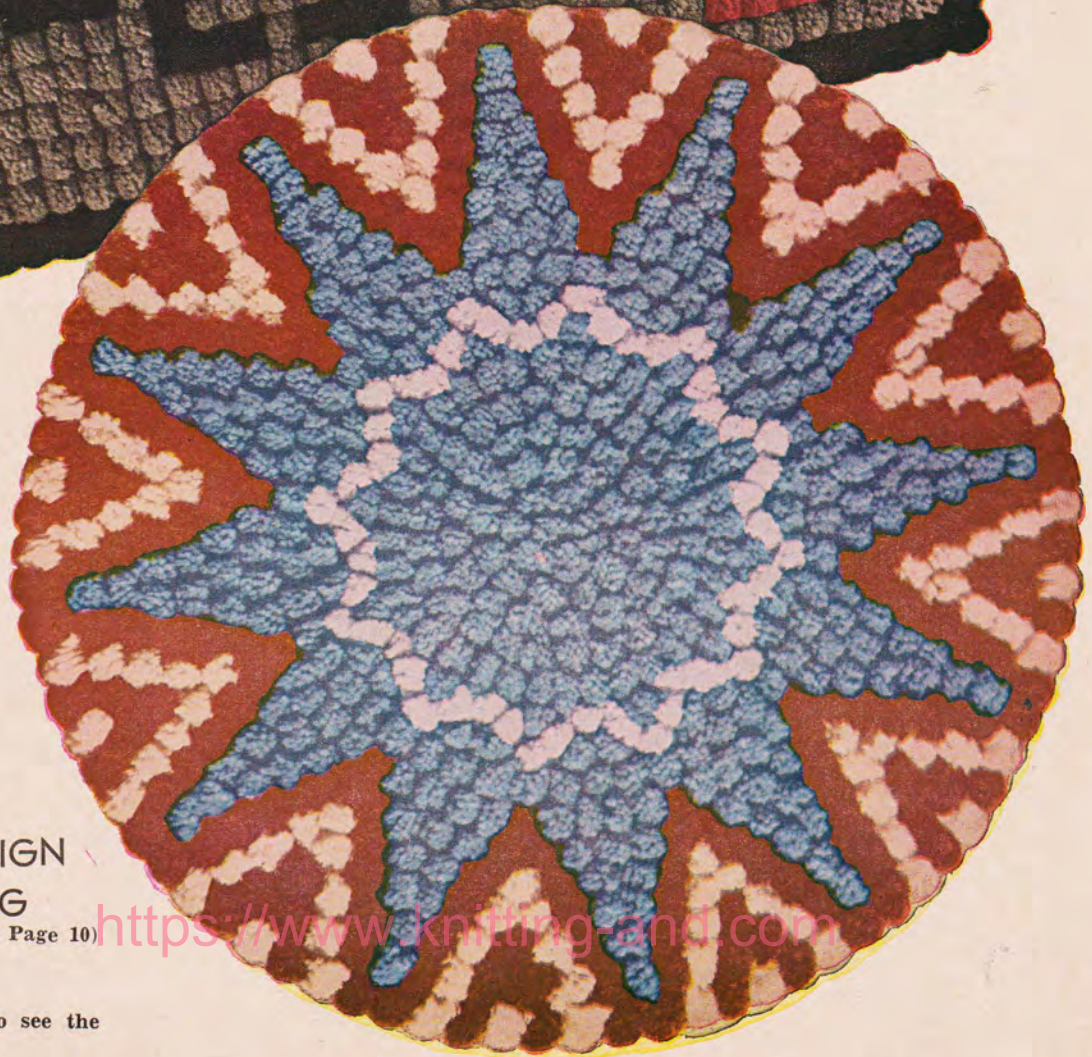
NOTE: If a particular design in this book appeals to you—but the colors shown are not suitable for your wide range of beautiful colors in Lily Rug Yarn (Art. 241) and select the colors you like



"INDIAN" POM PON RUG

(Directions for making
on Page 7)

QUILT
"LOCK"
POM PON RUG
Directions for making on
Page 6)



"STAR" DESIGN
TUFTED RUG
Directions for making on Page 10)

your color scheme—ask to see the
make for your rug.

<https://www.knitting-and.com>

"STAR" TUFTED RUG

(Shown in color on Page 9)

MATERIALS—Lily Fast Color Rug Yarn, Art. 241: 5 skeins Natural, 6 skeins Emerald Green, and 9 skeins Lt. Green. Lily Foundation, Art. 146-T, 30" round. Tuft the dots marked with small crosses in Emerald Green, the large dots in Natural, and fill in the background with tufts in Lt. Green. (This rug is shown in another attractive color combination on Page 9).

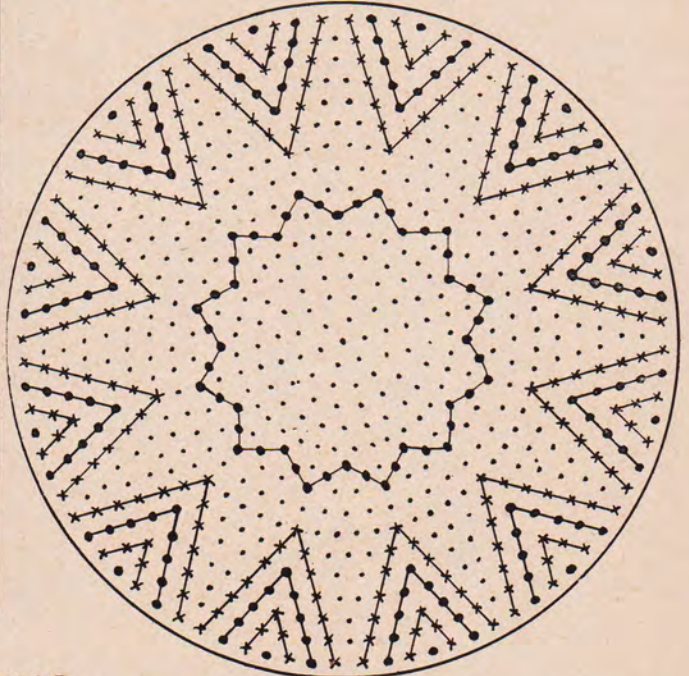


Diagram for "Star" Rug

"LINKED CIRCLES" TUFTED RUG

(Shown in color on Page 12)

MATERIALS—Lily Fast Color Rug Yarn, Art. 241: 8 skeins Dk. Brown, and 6 skeins each Green and Rust. Lily Foundation, Art. 146-W, 30" round.

Fill in the large dots around outside of each circle with tufts in Dk. Brown. Tie Tufts in Rust to each cross around inside edge of each circle. Fill in background solidly in Green tufts. (Beige tufts for background make a lovely rug also).

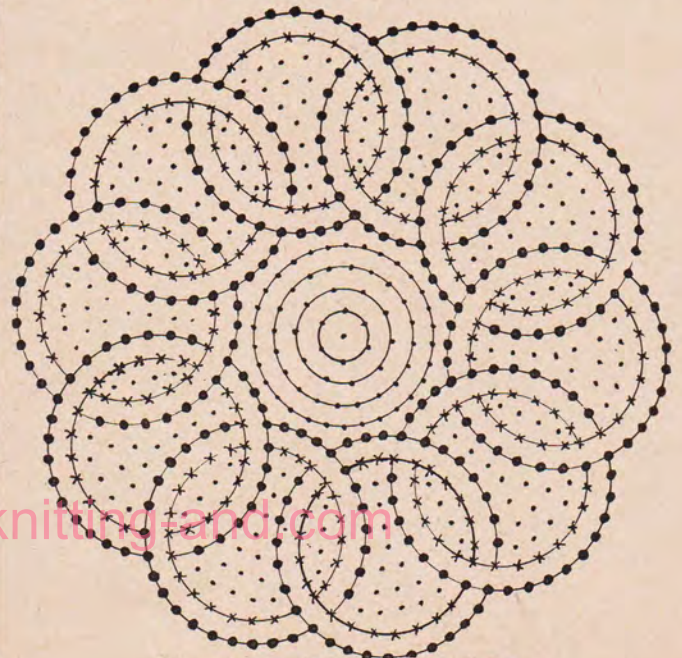


Diagram for "Linked Circles" Rug

"CLASSIC" TUFTED RUG

(Shown in color on Page 12)

MATERIALS—Lily Fast Color Rug Yarn, Art. 241: 10 skeins Dusty Rose, 13 skeins Wine. Lily Foundation, Art. 145-V, Size 27 x 40 inches. Lily Pom and Tuft Form. Tuft the small dots on pattern in Dusty Rose, and the large dots in Wine.

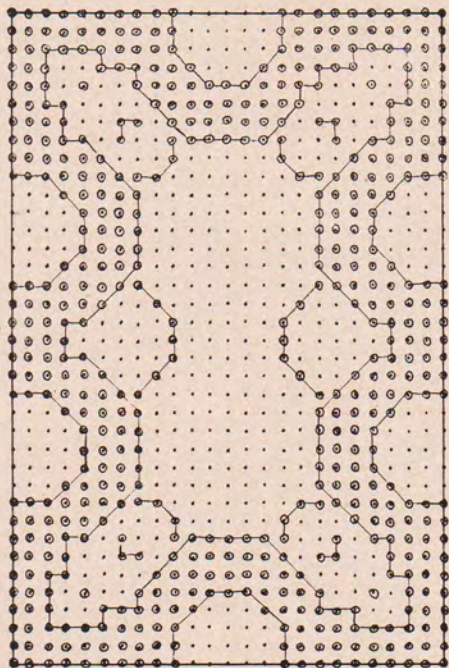
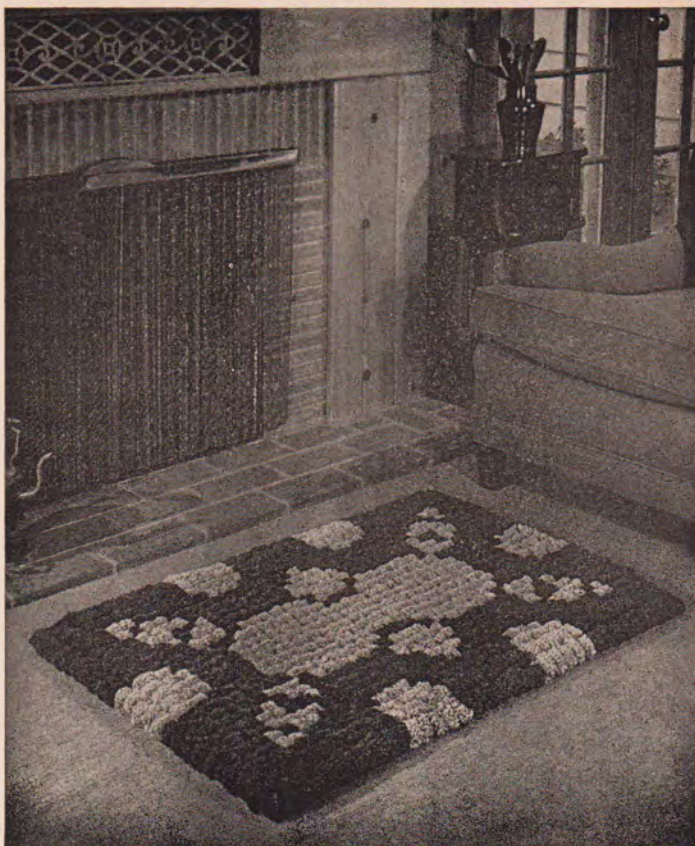


Diagram for "Classic" Rug



"COLONIAL" TUFTED RUG

(Shown in color on Page 12)

MATERIALS—Lily Fast Color Rug Yarn, Art. 241: 9 skeins Gray, 4 skeins Peach, 1 skein Dusty Rose. Lily Foundation, Art. 142-DD, (22" x 30").

Following diagram, tie Peach tassels to large dots, and tie Dusty Rose tassels to dots marked with a small cross. Fill in background with Gray tassels

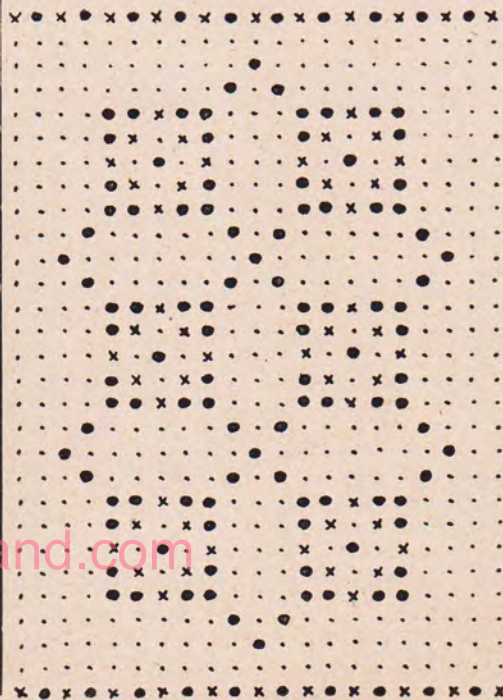


Diagram for "Colonial" Rug

<https://www.knitting-and.com>



"CLASSIC" DESIGN RUG

(Directions for making on
Page 11)

"LINKED CIRCLES" RUG

(Directions for making on Page 10)



Illustration of this
Rug on Page 11
shows Rug made
with tufts.

"COLONIAL" DESIGN RUG

(Directions for making on Page 11)

(Above illustration shows Rug made with Pom Pons)

<https://www.knitting-and.com>



No. 4

No. 2

Use the odds and ends of Lily Rug Yarn left over from your rugs and make these cute gadgets—POT HOLDERS to brighten up your kitchen, a bathroom PINCUSHION, CURTAIN TIE BACKS for bedroom or bathroom, and COASTERS for cold glasses or hot tea cups. Work out your own color schemes—as your yarn suggests. Use Lily Viking Crochet Hook Size 6-H.

No. 1 "Plaid" Pot Holder

(6 inches)

MATERIALS—26 yds. Color A, 7½ yds. Color B, 6 yds. Color C and 3½ yds. Color D.

With Color A ch 19, work 18 sc on ch, ch 1, turn.

Row 2—* 2 sc, 1 sc over next 2 sc, inserting hook at base of sc into row below (2 long sc). Repeat from * 3 times, 2 sc.

Row 3—Join Color B thru loop, turn and working over Color A and starting end of Color B, make long sc over last 2 sc, 2 sc, 2 long sc) 4 times. Cut Color B 3 inches from work.

Row 4—Draw up Color A thru loop, turn and working over end of previous color, repeat Row 2. Repeat Rows 3 and 4 alternately 8 times. Make Row 4 always in Color A, but make Row 3 in this order: Colors C, D, B, C, B, D, C and B.

Edge—With Color A work sc around edge, with 3 sc in each corner. Steam and press on wrong side. Sew a bone ring to one corner.

No. 2 "Pinwheel" Pot Holder

(6 inches)

MATERIALS—24 yds. Color A and 15 yds. Color B.

With Color A, ch 5, join, 8 sc in ring, sl st in back loop of 1st sc. **Row 2**—Ch 3, 2 dc in same st, 3 dc in each sc around, and join. Work bar of rows thru both loops.

Row 3—Ch 3, dc in same st, 2 dc in each dc and join.

Row 4—Ch 3, dc in same st, (3 dc, 2 dc in next st) repeated around and join.

Row 5—Ch 1, 1 sc in each dc. Join and fasten off.

Row 6—Join Color B, (ch 1, sl st in next sc) repeated around. Fasten off.

Pinwheel—With Color B, ch 2, 8 sc in starting st, sl st in back loop of 1st sc. Ch 10, skip last st, * 1 sc in next 2 sts, ch 3, sl st in last sc (a p), 1 sc in same st with last sc. Repeat from *. 1 sc in remaining 5 ch sts, sl st in next sc on ring. Ch 9, sl st back in 4th sc up previous scroll, ch 1. Repeat from * until 8 scrolls are completed. Fasten off. Join 1st and last scrolls and tack on front of Holder. Steam and press Holder on wrong side. Sew a bone ring to edge.

No. 3 "Rose" Pot Holder

(6½ inches)

MATERIALS—30 yds. Color A, 10 yds. Color B, 9 yds. Color C (Green) and 2 yds. Color D.

With Color A ch 20 and work 19 sc on ch.

Row 2—Ch 1, turn, 19 sc. Work 18 more rows. Fasten off.

Edging—With Color B work sc all around edges, putting 3 sc in each corner st. Repeat with Color C.

Following pattern, embroider Rose Design in cross stitches. Make Rose in Color B shaded with Color D, leaves in Green (Color C).

Steam and press Holder on wrong side.

Cover back with matching cloth. Sew a bone ring to top corner.

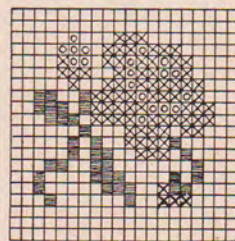


Chart for "Rose" Pot Holder Design

No. 4 "Basket Weave" Pot Holder

(6¼ inches)

MATERIALS—21 yds. Color A and 17 yds. Color B.

With Color A ch 2, 6 sc in starting st. Sl st in back loop of 1st sc. Cut yarn 3 inches from work and pull thru loop tight, to fasten off.

Row 2—With Color B make 3 sc in each sc, working over end of Color A. Fasten off. Work following rows thru both loops of sts.

Row 3—Join Color A with * 2 sc in 1st sc in any 3-sc-group, a long sc over next sc, inserting hook at base of sc into row below, 1 sc in next sc. Repeat from * 5 times. Join and fasten off.

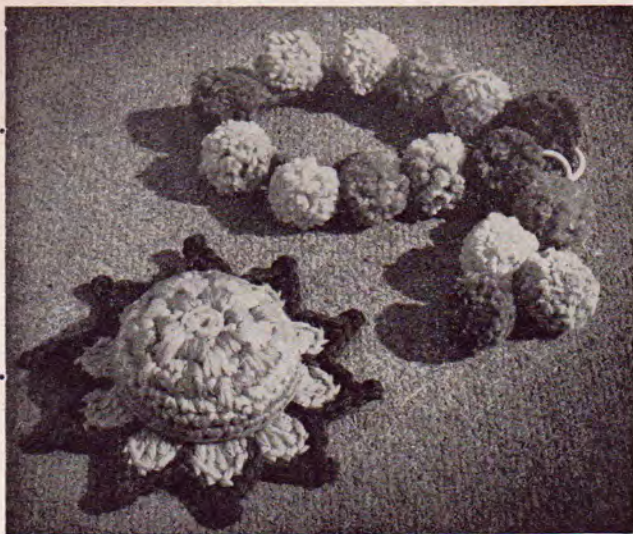
Row 4—With Color B make 1 sc in each st, with a 2-sc-widening in sc midway between long sc of last row. Fasten off.

Row 5—Join Color A with sc in the 2 sc of one widening, ** 1 sc in next sc, * 3 long sc at base of next sc, covering it and the next sc, 1 sc in next 3 sc. Repeat from * around. Fasten off. Repeat Row 4.

Row 7—Repeat Row 5 to **, sc in next 2 sc, * 3 long sc at base of next sc, covering it and next sc, 1 sc in next 5 sc. Repeat from * around. Fasten off. Repeat Row 4.

Row 9—Repeat Row 5 to **, sc in next 3 sc, * 3 long sc at base of next sc, covering it and next sc, 1 sc in next 7 sc. Repeat from * around. Fasten off. Repeat Row 4.

Row 11—Repeat Row 5 to **, sc in next 3 sc, * 5 long sc at base of next 2d sc, covering it and next 2 sc, 1 sc in next 7 sc. Repeat from * around. Fasten off. Steam and press Holder on wrong side. Sew a bone ring to edge.

No.
6

Bathroom Pincushion and "Pom Pon" Curtain Tie Back

No.
5

No. 5 Bathroom Pincushion

MATERIALS—6 yds. Color A, 10 yds. Color B, 13 yds. Lt. Green and 7 yds. Dark Green.

Cushion—With Color A, ch 2, 6 sc in starting st.

Row 2—(2 sc in back loop of next sc) 6 times. Sl st thru both loops of 1st sc. Cut yarn 3 inches from work and pull thru loop, tight, to fasten off. Make further rows thru both loops of sts.

Row 3—With Color B make (1 sc in 1 sc, 2 long sc over next sc, inserting hook at base of sc into row below) 6 times, working over yarn end left from last row. Sl st in 1st sc. Fasten off as before.

Row 4—With Color A, (sc in 2 long sc, 2 long sc over next sc) 6 times. Join and fasten off.

Row 5—With Color B, (sc in 2 long sc, sc in next sc, 2 long sc over next sc) 6 times. Join and fasten off.

Row 6—With Color A, (sc in 2 long sc, sc in next sc, a long sc over next sc, sc in next sc) 6 times. Join and fasten off.

Row 7—With Color B, make 1 sc in each sc. Join.

Row 8—Ch 1, 1 sc in each sc. sl st in 1-ch. Cut yarn 24 inches from work and pull thru loop, tight. Use this end to sew Cushion to Base.

Base—With Lt. Green repeat Rows 1 and 2, but do not fasten off.

Row 3—Ch 1, (2 sc in next sc, 1 sc in next) repeated around. Sl st in 1-ch.

Row 4—Ch 1, 1 sc in same place, (1 sc in next 2 sc, 2 sc in next sc) repeated around. Sl st in 1-ch.

Row 5—Ch 1, 1 sc in same place, (1 sc in 3 sc, 2 sc in next sc) repeated around. Sl st in 1-ch. Work bal. of rows in back loops only.

Row 6—Ch 1, * 1 hdc and 2 dc in next sc, 1 dc and 1 hdc in next sc, 1 sc in next sc. Repeat from * 9 times. Fasten off.

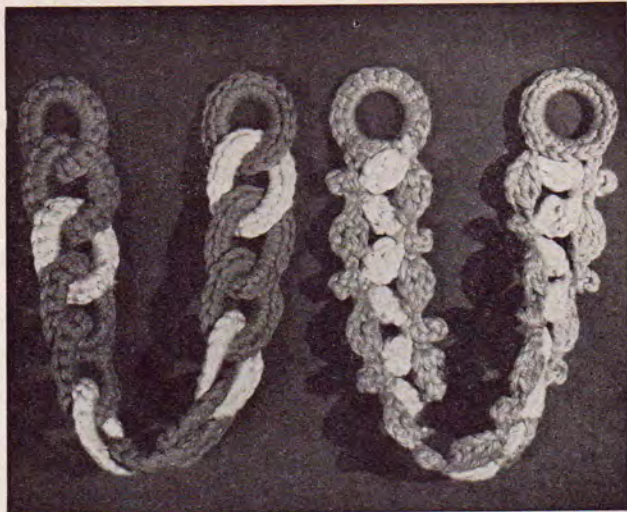
Row 7—With Dk. Green make 1 sc in 1st hdc on 1 petal, * 1 sc in next st, (2 sc, ch 3, sl st in last sc for a p, and 1 sc) in next st, 1 sc in next 2 sts, a long sc over next sc in angle between petals, 1 sc in next st. Repeat from * around. Fasten off. Steam and press Base on wrong side. Sew Cushion onto Base, leaving a 1/2" opening, thru which stuff Cushion with cotton. Close opening.

No. 6 "Pom Pon" Curtain Tie Back

MATERIALS—13 yds. Color A, 6 yds. Color B, and 5 yds. each of Colors C and D, for one Tie Back.

Band—With Color A ch 4, 1 sc in starting st, (ch 3, turn, sc in last sc) repeated for 12 inches. Fasten off. Steam and press Band. Sew a bone ring to each end.

Make 3 Poms of Color A and tie one at each end and one in center of Band. Make 4 Poms of Color B and 2 each of other 2 colors, and tie half of them on each half of Band. Using 12 inch tie strings, make 1 Pom in each color. Fasten at different lengths in a group at one end of Band.

"Linked Ring" Curtain
Tie Backs"Cluster" Curtain
Tie Backs

"Linked Ring" Curtain Tie Backs

MATERIALS—Lily Fast Color Rug Yarn, Art. 241: Partial skeins each of Peach, Dusty Rose and Gray. Lily Viking Crochet Hook Size H-6.

With Gray, ch 12, sl st in starting st, forming a ring. Cover ring with 18 sc. Cut yarn 6 inches from work, thread to a large needle and fasten off on back. With Dusty Rose, ch 12, insert starting end of chain thru 1st Ring from front to back, and make a sl st in starting st, 18 sc in ring and fasten off. Make the 3d ring in Peach, linking it thru Dusty Rose ring in same way. Be careful to keep rings right-side-up at all times. (Now continue, linking a Gray, Dusty Rose and Peach ring in order) 3 times, finishing row with a final Gray ring (13 rings in all). With sewing thread, tack rings together at top and bottom on back of each. Lay finished work right-side down on ironing board and steam with a wet cloth and hot iron, then press thru a dry cloth until perfectly dry.

No. 8 "Cluster" Curtain Tie Backs

MATERIALS—Lily Fast Color Rug Yarn, Art. 241: Partial skeins of Natural, Rose Pink and Turquoise. Lily Viking Crochet Hook, Size H-6. 2 celluloid or brass rings about 1 inch in size.

Band—With Natural, ch 4, 2 dc in starting st, holding the last loop of each dc on hook, thread over and draw thru all 3 loops on hook at once (a Cluster). (Ch 5, a 2-dc-Cluster in 4th st from hook) 14 times. Ch 1 and fasten off.

Row 2—Join Rose Pink to starting st of last row, * ch 5, a 2-dc-Cluster in 4th st from hook, ch 1, 1 sc between next 2d and 3d Natural Cluster, ch 4, sl st in sc for a p. Repeat from * 6 times. Ch 1, 1 dc into end st of 1st Row. Fasten off.

Row 3—Join Turquoise to same end st of 1st Row and work along opposite side of 1st Row, repeating last row.

Lay Band right-side-down on ironing board and steam with a wet cloth and hot iron, then press thru a dry cloth until perfectly dry.

Rings—Join Turquoise to one ring and cover it closely with sc. Fasten off and tack ring over one end of band. Repeat with 2d ring over opposite end.

Coasters (4 inches)

MATERIALS—9 yds. Natural and 8 yds. Color for 1 Coaster. With Natural, ch 2, 8 sc in starting st. Sl st in 1st sc. Cut yarn 3 inches from work and pull thru loop, tight, to fasten off. Work over this end in next row.

Row 2—1 sc with Color, (ch 1, 1 sc in next sc) 7 times, ch 1, sl st in 1st sc. Fasten off as before.

Row 3—With Natural make 2 sc in a 1-ch space, (ch 1, 2 sc in next 1-ch space) 7 times, ch 1, sl st in 1st sc. Fasten off.

Row 4—With Color repeat last row except make 3 sc in each 1-ch space.

Row 5—Join Natural to 2d sc in 1 group, (5 dc in next 1-ch space, sl st in 2d of next 3 sc) repeated around. Fasten off.

Row 6—Join Color to 1st dc on 1 shell, * (ch 1, sl st in next dc) 4 times, sl st in 1st dc on next shell. Repeat from * around. Join and fasten off. Steam and press on wrong side.

GENERAL INSTRUCTIONS FOR MAKING "FLUFF RUGS"

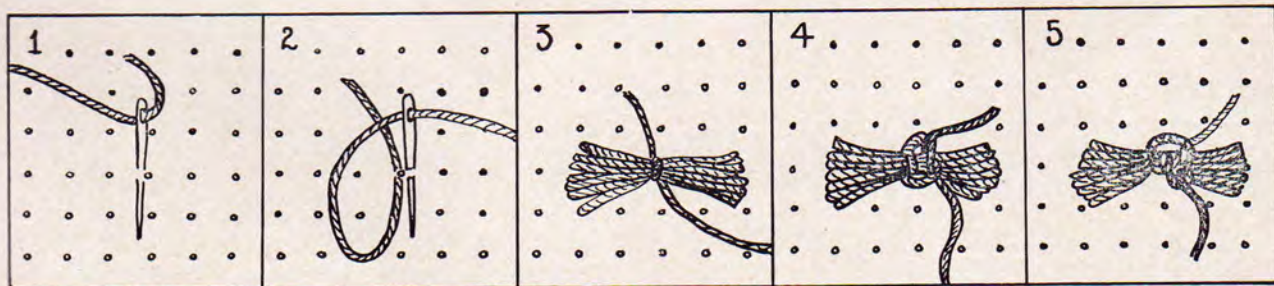
MATERIALS—Lily Fast Color Rug Yarn, Art. 241, 7-oz. stamped foundation material. Use any needle with eye large enough to carry yarn.

Cut the Rug Yarn into 3-inch lengths. Each tuft is made of 17 of these strands. To make the tufts, cut a strip of stiff cardboard 3 inches wide. If shorter tufts are desired, use cardboard 2 inches wide. This would reduce the amount of yarn specified in the Material instructions by one-third. Wind the Yarn around this card, placing strands side-by-side—not overlapped. Then cut along each edge with sharp scissors, lay out flat, and group into bunches of 17 strands each, keeping ends even.

NOTE: If you are making your tufts on the Lily Pom and Tuft Form follow these same directions for sewing to foundation material.

SEWING TO BACK—The position of each tuft is stamped with a dot on rug foundation. Use a strand of the yarn matching color of tuft for the stitching and tying thread. Start at one end of rug—at left end of 1st row. Make a small stitch lengthwise of rug close to left side of printed dot. Pull yarn thru until an end about 2¼ inches long is left. (Fig. 1). Bring yarn back and make a stitch on right side of dot—forming a loop of yarn (Fig. 2). Into this loop insert one of the tufts (17 strands). Pull loop down tight across the center of these strands (Fig. 3). Grasp both ends of the stitching thread, pull tight, and tie a square knot (Figs. 4 and 5). Trim ends of tying thread even with ends of tuft. Double tuft into a tassel, trim ends even, and press down above and to the left—out of the way. Repeat with next dot to right in same crosswise row. Then cover the next row, and continue until other end is reached—completing rug.

FINISHING INSTRUCTIONS—Turn edge of canvas back twice under outside row of tufts and hem down. Shake rug well.

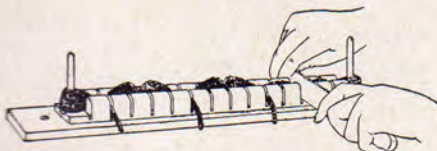


DIRECTIONS FOR USING LILY POM AND TUFT FORM WITH LILY RUG YARN

Directions for Sewing-on Finished Poms to Foundations

- A. Thread one end of tie-strings through rug needle, loop under foundation dot—and,
- B. With other end of tie-string, make one tie in a loose single knot
- C. Turn Poms over and tie firmly with double (square) knot, Trim tie-strings to match with poms in length.

Directions for making Tufts on Lily Pom and Tuft Form

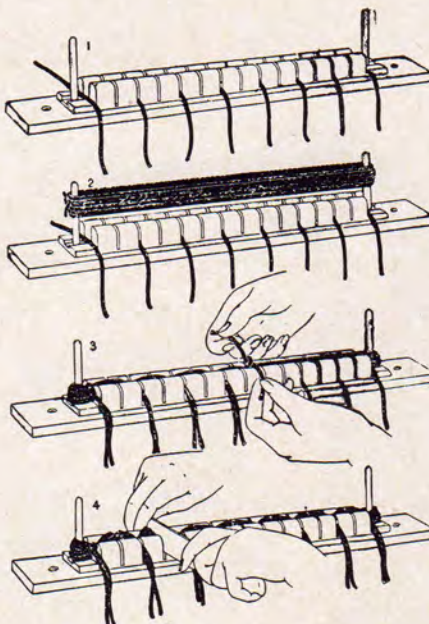


Drive posts into holes at each end of form. Using four tie strings—3½" long, place in second slot from post, and every fourth slot thereafter.

Use 11 turns, or 22 strands, of Lily Rug Yarn—wound loosely on posts. Press into the groove and tie as for making poms. Cut through the third slot from each end FIRST—and make one cut through the center slot. Remove end tufts from posts and cut through looped ends with scissors.

If tie-strings are centered in the groove and tightly tied, the ends will be the exact length of the tufts, which are now ready for sewing on foundation.

For Sewing to Foundation, follow same Directions given above for Fluff Rugs.



Sewing Poms to Foundations

For making Pom Poms

1. Drive posts into holes at each end of form. Cut eight tie-strings from Lily Rug Yarn—7" long—and beginning with the first slot next to the post, place the tie-strings in every other slot.
2. Loop Lily Rug Yarn around one post and wind back and forth around posts LOOSELY sixteen complete times, making a total of 32 strands. Tie-off at the starting end post.
3. Press all strands firmly down into groove and tie a firm single knot with each tie string.
4. With sharp knife cut through yarn in the groove at each slot between tie-strings, cutting the two ends first.
5. Remove poms looped around each post and with sharp scissors cut through middle of the loop. Remove other poms and fluff-up by gently hitting on table edge.

NOTE: If Directions are followed properly, there will be no wasted yarn.

Complete Directions for using Lily's Pom and Tuft Form is given you with the Form

—ASK YOUR DEALER TO SHOW YOU THIS FORM—



ART. 241

A FAST COLOR Rug Yarn of soft, 4-ply cotton construction. 80-yd. skeins. The perfect cotton yarn for making rugs and other household articles. Lily's Rug Yarn can be used also for crocheted rugs or any other type rug for which Candlewick Tufting Cotton is used. A complete range of colors to select from.

- R-4 Natural
- R-3 Cream
- R-90 Beige
- R-10 Yellow
- R-5 Peach
- R-20 Orange
- R-129 Rust
- R-120 Brown

- R-124 Dk. Brown
- R-36 Turquoise
- R-26 Lt. Blue
- R-29 Dk. Blue
- R-75 Purple
- R-1 Bleached

- R-46 Rose Pink
- R-49 Dusty Rose
- R-70 Lavender
- R-55 Lt. Green
- R-62 Emerald Green

- R-95 Red
- R-105 Wine
- R-2 Black
- R-58 Hunter Green
- R-28 Delft Blue

- R-41 Salmon Rose
- R-87 Gray
- R-23 Var. Rose and White
- R-13 Var. Blue and White

- R-21 Var. Green and White
- R-42 Dark Peach
- R-49.5 Light Dusty Rose

NOTE: When purchasing yarn to make your rugs, buy sufficient of each color to complete them, as the next lot of the same color may differ slightly in shade.

"TIGER SKIN" TUFTED RUG

MATERIALS—Lily Rug Yarn: 11 skeins Beige, 5 skeins Brown, Lily Foundation, Art. 145-EE, Size 27" x 40".

Tuft the dots marked with small crosses in Brown. Tuft the background dots in Beige. Fasten glass animal eyes in place, or tie a black tuft with a white center on each large circle for eyes.

Cut foundation 1 inch from tufting, turn edge back twice and hem down under outside row of tufts.

Diagram for "Tiger Skin" Rug



<https://www.knitting-and.com>

Lily Mills Company
SHELBY, NORTH CAROLINA