



Thank you

for downloading this pdf file from Knitting-and.com!

Your visits have helped keep Knitting-and.com online, providing free crafts and recipes since 1996.

There are hundreds of free patterns and crafts available and more added all the time!

Note: The pink watermark on the following pages will not show if you print this file.

Fluff Rugs



Thistle design
fluff rug
Instructions on
back cover

<https://www.knitting-and.com>

Book 600

PRICE 10¢

GENERAL INSTRUCTIONS FOR MAKING "FLUFF" RUGS

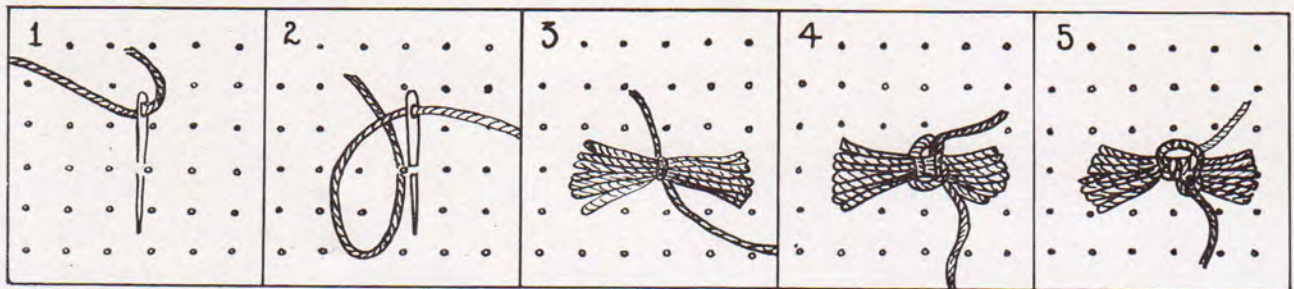
MATERIALS—Lily Fast Co'or Rug Yarn, Art. 241. 7-oz stamped foundation material. Use any needle with eye large enough to carry yarn.

Cut the Rug Yarn into 3-inch lengths. Each tuft is made of 17 of these strands. To make the tufts, cut a strip of stiff cardboard 3 inches wide. If shorter tufts are desired, use cardboard 2 inches wide. This would reduce the amount of yarn specified in the Material instructions by one-third. Wind the Yarn around this card, placing strands side-by-side—not overlapped. Then cut along each edge with sharp scissors, lay out flat, and group into bunches of 17 strands each, keeping ends even.

NOTE: If you are making your tufts on the Lily Pom and Tuft Form follow these same directions for sewing to foundation material.

SEWING TO BACK—The position of each tuft is stamped with a dot on rug foundation. Use a strand of the yarn matching color of tuft for the stitching and tying thread. Start at one end of rug—at left end of 1st row. Make a small stitch lengthwise of rug close to left side of printed dot. Pull yarn thru until an end about $2\frac{1}{4}$ inches long is left. (Fig. 1). Bring yarn back and make a stitch on right side of dot—forming a loop of yarn (Fig. 2). Into this loop insert one of the tufts (17 strands). Pull loop down tight across the center of these strands (Fig. 3). Grasp both ends of the stitching thread, pull tight, and tie a square knot (Figs. 4 & 5). Trim ends of tying thread even with ends of tuft. Double tuft into a tassel, trim ends even, and press down above and to the left—out of the way. Repeat with next dot to right in same crosswise row. Then cover the next row, and continue until other end is reached—completing rug.

FINISHING INSTRUCTIONS—Turn edge of canvas back twice under outside row of tufts and hem down. Shake rug well.



CHAIR PADS -- Fig Q



MATERIALS—Lily Fast Colos Rug Yarn, Art. 241: 3 skeins Lt. Blue, 2 skeins Dk. Blue. Lily Foundation, Art. 142-Q (22" x 30").

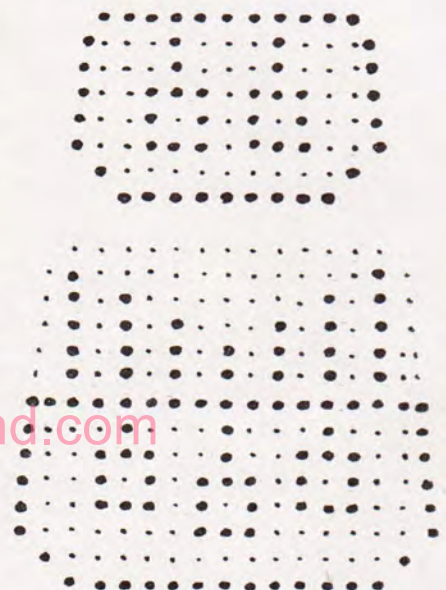
Following diagram, tuft the large dots of design in Dk. Blue, with the small dots in Lt. Blue.

Turn edge of foundation back in a narrow hem under outside row of tufts. Line each piece with Dk. Blue glazed chintz.

TIES—Cut 2 strands of Dk. Blue Yarn slightly more than double desired length of ties. Twist tightly, double, and twist in opposite direction. Tack center of this cord to corner of Pad. Tack a tie to each back corner of Seat Pad and to top corners of Back Pad.

KEY:

—Lt. Blue
●—Dk. Blue



"VICTORIAN" FLUFF RUG

Fig. G

MATERIALS—Lily Fast Color Rug Yarn, Art. 241: 4 skeins Dusty Rose, 12 skeins Wine. Lily Foundation, Art. 146-G (30" in diameter).

Fill in the large dots of design with tufts in Dusty Rose. Then cover background solidly with tufts in Wine.

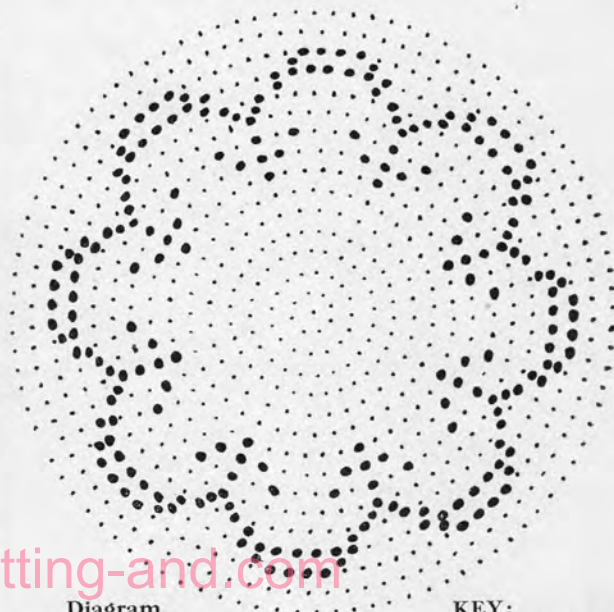


Diagram
"Victorian" Rug

KEY:
●—Dusty Rose
○—Wine

<https://www.knitting-and.com>



"LOTUS" BATHROOM SET

Fig. H

MATERIALS—Lily Fast Color Rug Yarn, Art. 241: 14 skeins
Dusty Rose, 5 skeins Natural,
Lily Viking Crochet Hook, Size H-6. Lily Foundation
Art. 145-H, (27" x 40") Toilet Seat Foundation, Art.
148-H. This is sufficient for the set of Rug and Seat
Cover.

Following diagram, fill in large dots of design with tufts
in Natural. Make background in Dusty Rose.

SEAT COVER—When tufting is finished, turn edge of
foundation back in a narrow hem under outside row of
tufts. Using a single strand of Dusty Rose, work a row of
button hole stitches over hem around curved edge, making
stitches about $\frac{3}{8}$ inch apart. With crochet hook and
Dusty Rose yarn, join to 1st stitch at one back corner,
ch 4, 1 dc in next st, (ch 1, 1 dc in next st) repeated
around to other back corner. Ch 3, turn, 1 dc in last 1-ch
space, (ch 1, 1 dc in next 1-ch) repeated around. Fasten
off. Run a double strand of Dusty Rose thru last row of
crochet and use ends to tie cover on seat.

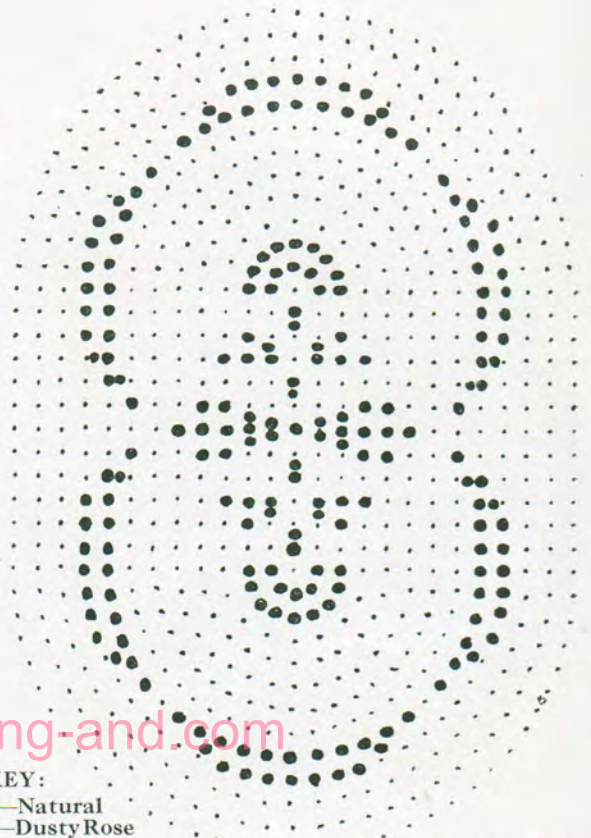
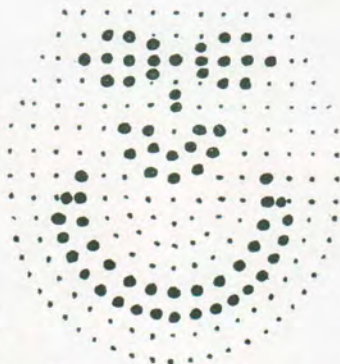


Diagram "Lotus" Design



"WOODLAND" FLUFF RUG

Fig. 1

MATERIALS—Lily Fast Color Rug Yarn, Art. 241: 2 skeins Dk. Brown, 2 skeins Natural, 2 skeins Rust, 6 skeins Beige. Lily Foundation, Art. 142-I, (22" x 30").

Fill in 2 large squares and 2 small squares forming center of rug, with tufts in Beige. Outline these squares with tufts in Dk. Brown. Fill in triangles around edge of rug with tufts in Natural, Rust and Beige, following diagram for placement of colors. When making these tufts and those in Dk. Brown, take the tying stitches **crosswise** of lines.

KEY:

- Dark Brown
- Natural
- ×—Rust
- Beige

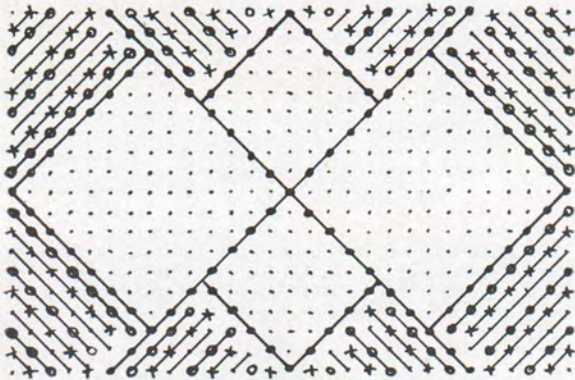


Diagram "Woodland" Design



Seat Cover—To Match "Lotus"
Design Rug on Page 4



<https://www.knitting-and.com>

"TILE" FLUFF RUG, Fig. J

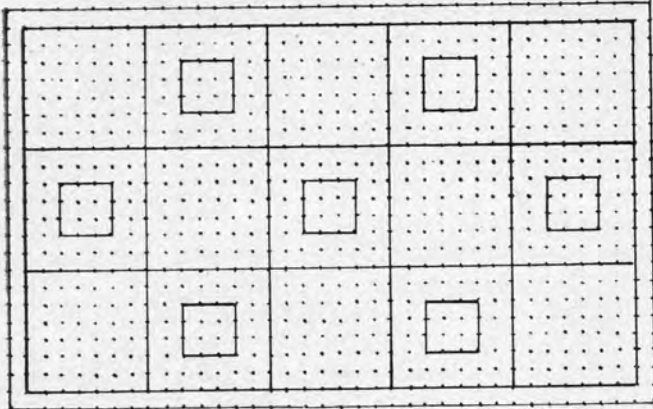


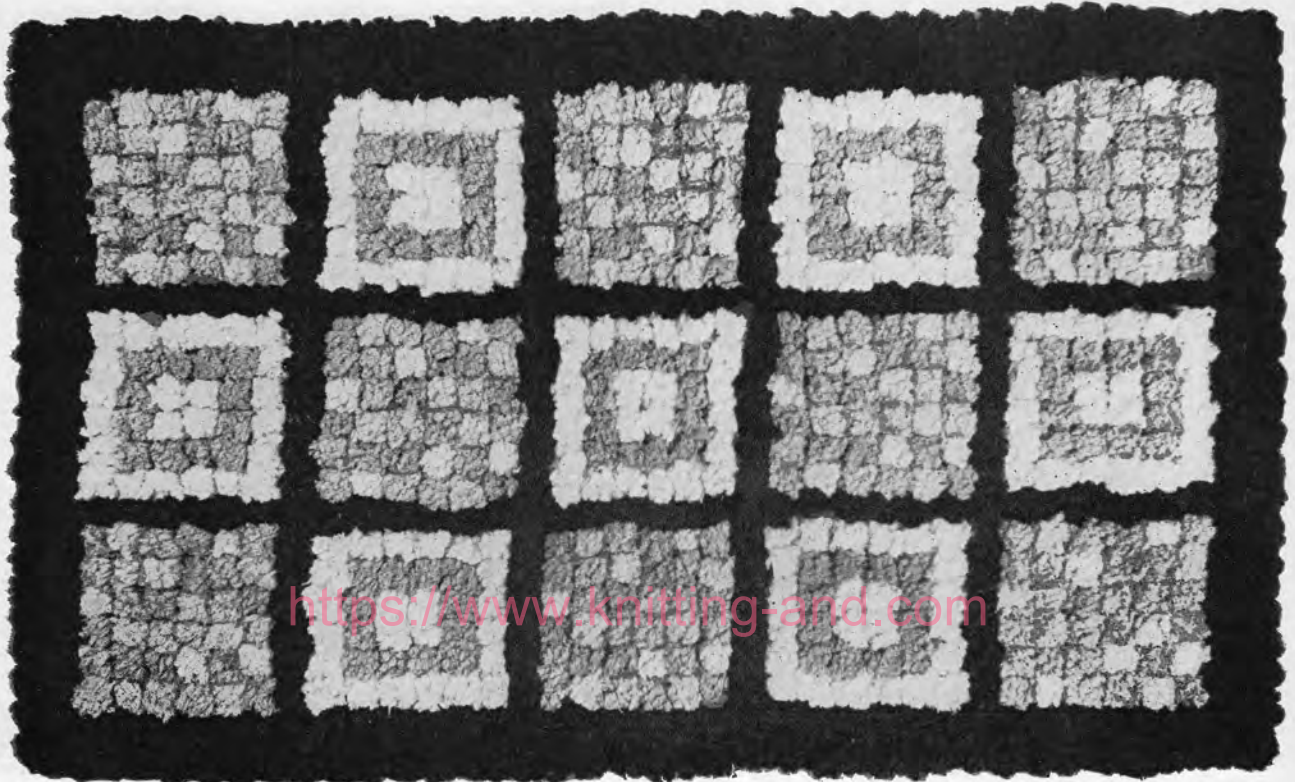
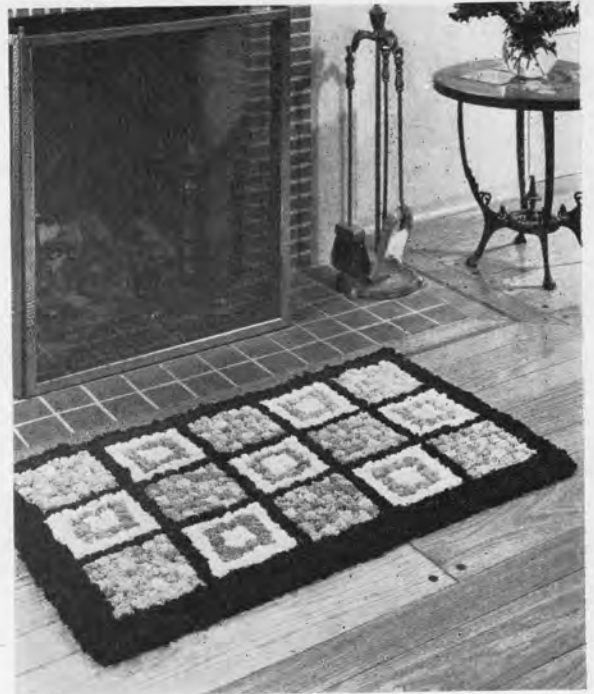
Diagram for "Tile" Design

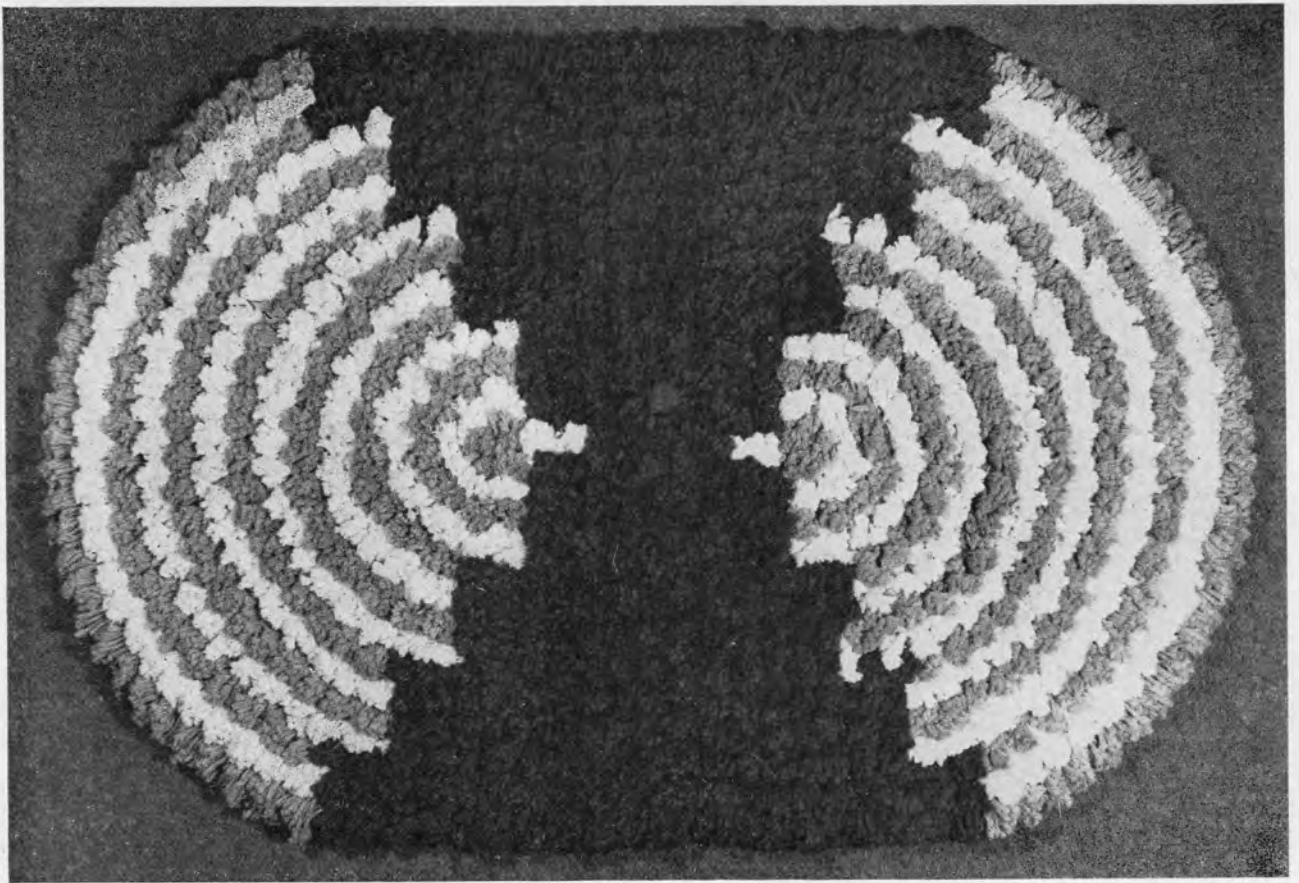
Blue	Peach	Green	Pink	Lav.	Green
Pink	Lav.	Yellow	Blue	Peach	Yellow
Peach	Green	Peach	Lav.	Pink	Blue
Blue	Pink	Blue	Yellow	Green	Lav.
Yellow	Lav.	Yellow	Peach	Lav.	Pink
Green	Pink	Peach	Green	Yellow	Blue

Detail for Filling in No. 1 Squares

MATERIALS—Lily Fast Color Rug Yarn, Art. 241: 7 skeins Black, 4 skeins Cream, 2 skeins Lt. Green, 1 skein each; Peach, Yellow, Rose Pink, Lt. Blue, Lavender. Lily Foundation, Art. 145-J, (27" x 40").

Tuft the lines in Black. Small squares in Lt. Green. Background of No. 2 square in Cream. See detailed diagram for filling in No. 1 squares.





"HOUR GLASS" FLUFF RUG, Fig. K

MATERIALS—Lily Fast Color Rug Yarn, Art. 241: 8 skeins Rust, 5 skeins Peach, 5 skeins Cream. Lily Foundation, Art. 145-K, (27" x 40").

Tuft the center section of rug in Rust. Tuft the curved lines on each end of rug alternately in Cream and Peach. (See diagram key).

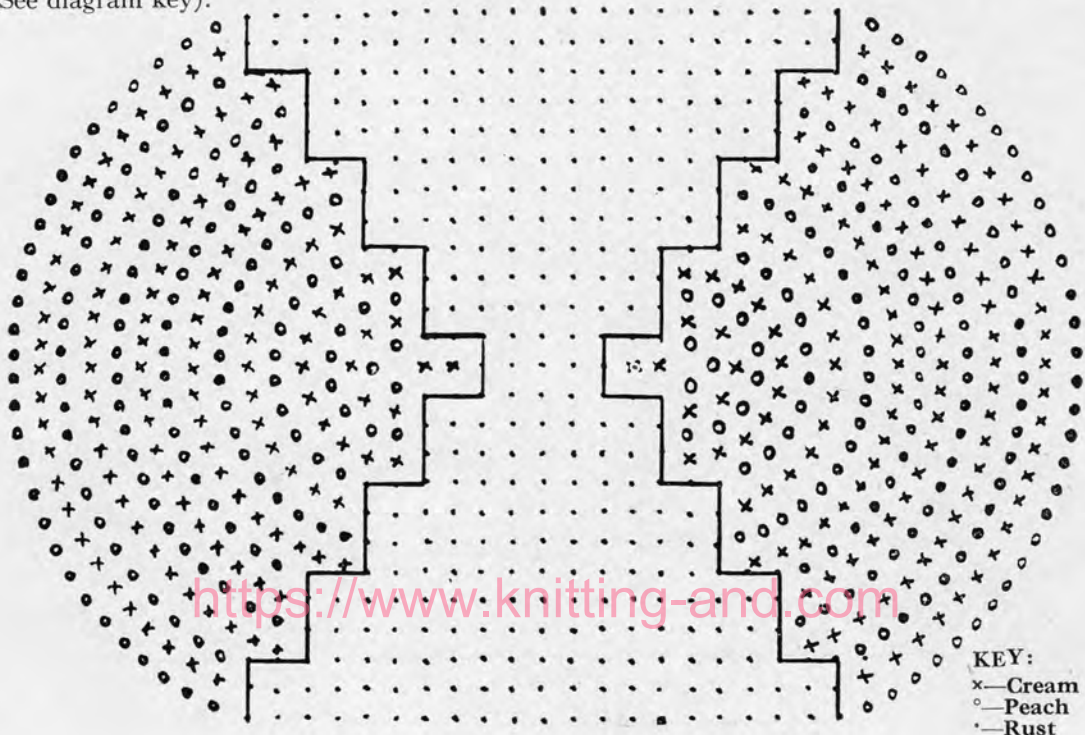


Diagram for "Hour Glass" Rug



"GARDEN LATTICE" FLUFF RUG, Fig. F

(Directions on Page Nine)

"GARDEN LATTICE" BATHROOM SET, Fig. F

MATERIALS—Lily Fast Color Rug Yarn, Art. 241: 15 skeins Cream, 4 skeins Green, 1 skein Orchid, 1 skein Purple. This is sufficient for the Set of Rug and Seat Cover.

For Rug Alone: 13 skeins Cream, 3 skeins Green, 1 skein Orchid, 1 skein Purple, Lily Foundation, Art. 145-F (27" x 40"). **For Seat Cover,** Art. 148-F. Lily Viking Crochet Hook, Size H-6.

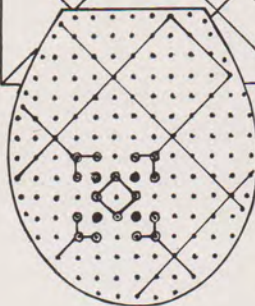
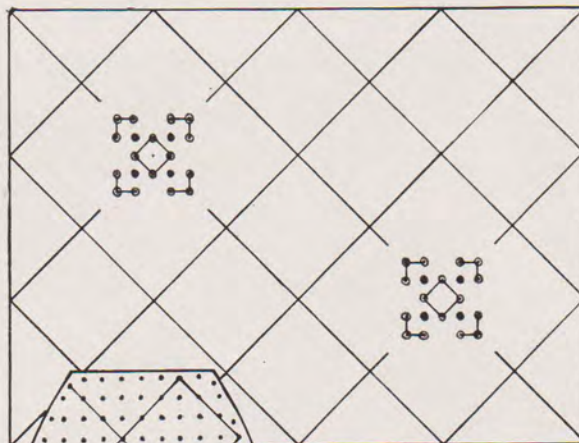
Following diagram, tie Green tufts to all the diagonal lines.

FLOWERS—Tie a Cream tuft to the dot in center. To the 4 dots in center small square, tie Orchid tufts. To the next 4 dots, tie Purple tufts. Fill in 12 dots around outside in Orchid tufts. Fill in background of rug in Cream.

TOILET SEAT COVER—Follow instructions for the tufting of rug. When tufting is finished, cut canvas $\frac{3}{4}$ inch from outside row of tufting, turn back twice and hem down. With a single strand of Cream, work around curved edge with buttonhole stitches, spacing them about $\frac{1}{4}$ inch apart. With a No. H-6 crochet hook and Cream yarn, join to first stitch at one corner, ch 4, 1 dc in next st (ch 1 dc in next st) repeated around to other back corner.

Row 2—Ch 3, turn, 1 dc in last 1-ch space, (ch 1, 1 dc in next 1-ch space) repeated around. Repeat this row once and fasten off.

Cord—Cut a strand of Cream about 3 times the distance around, crochet. Twist this strand very tight, double and twist in opposite direction. Run this cord thru the 3rd row of crochet.

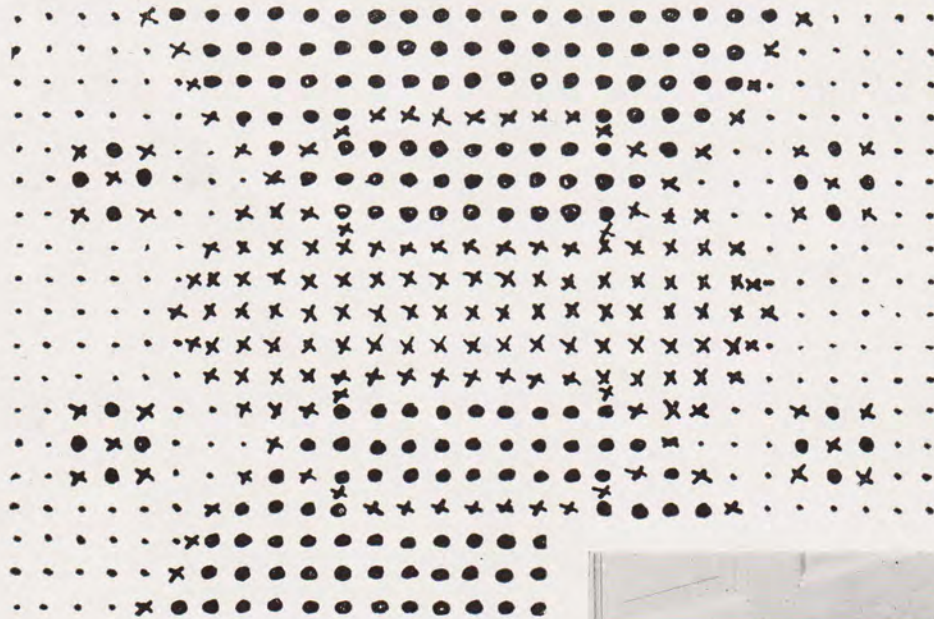
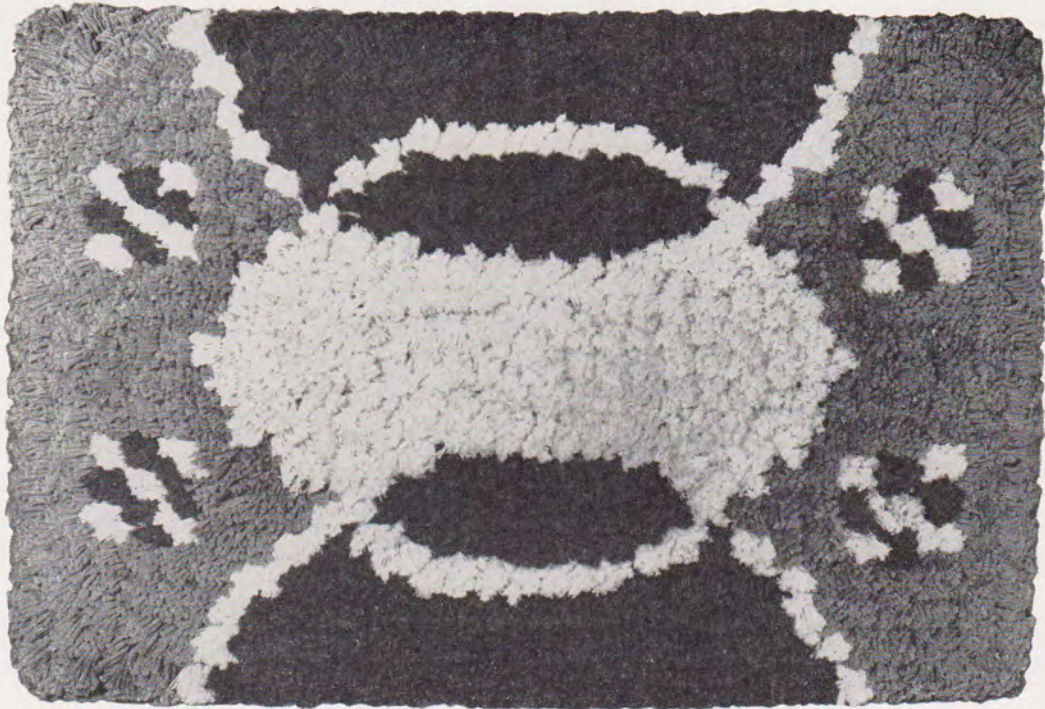


Foundation Material for this Rug will show "Dots" for each Tuft—Like Seat Cover Diagram.

KEY:

- Orchid
- Purple
- Cream





KEY:
 •—Light Green
 ●—Dk. Green
 ×—Cream

"FORMAL GARDEN" FLUFF RUG, Fig. L

MATERIALS—Lily Fast Color Rug Yarn, Art. 241:
 4 skeins Cream, 4 skeins Lt. Green, 5 skeins Dk.
 Green. Lily Foundation, Art. 142-L, (22" x 30").

Following diagram, tuft the large dots in Dk. Green,
 small dots in Lt. Green and the crosses in Cream.

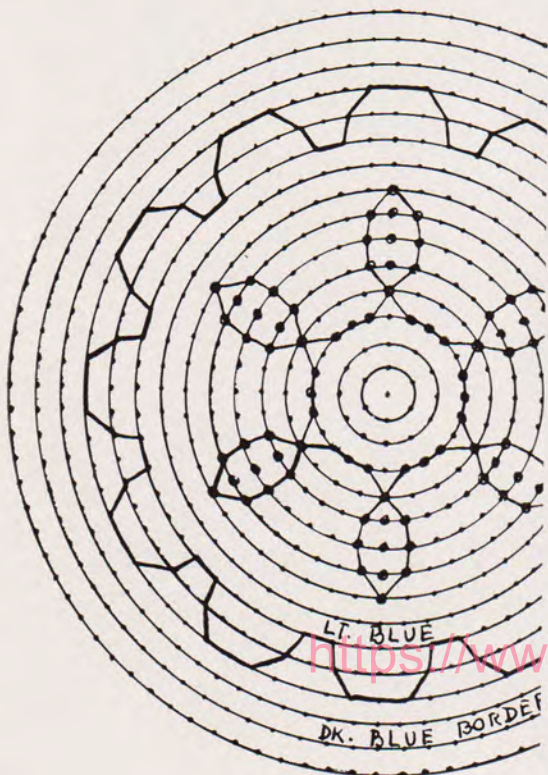
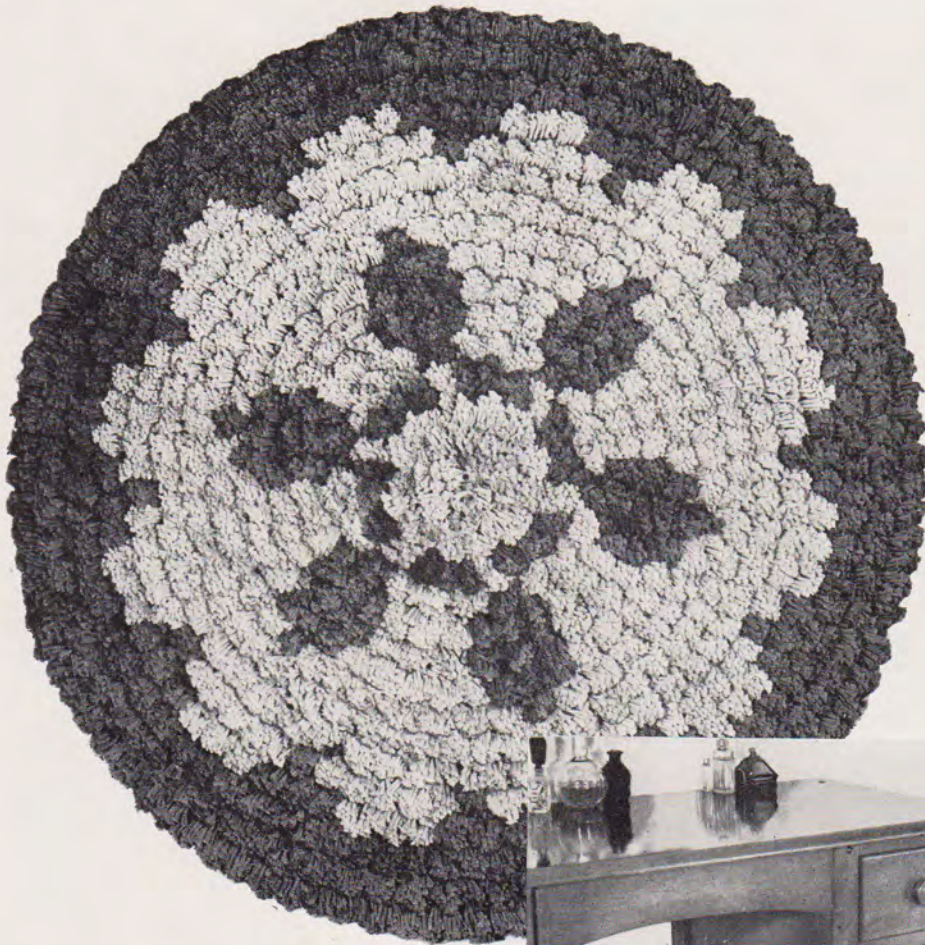


"DAHLIA" FLUFF RUG

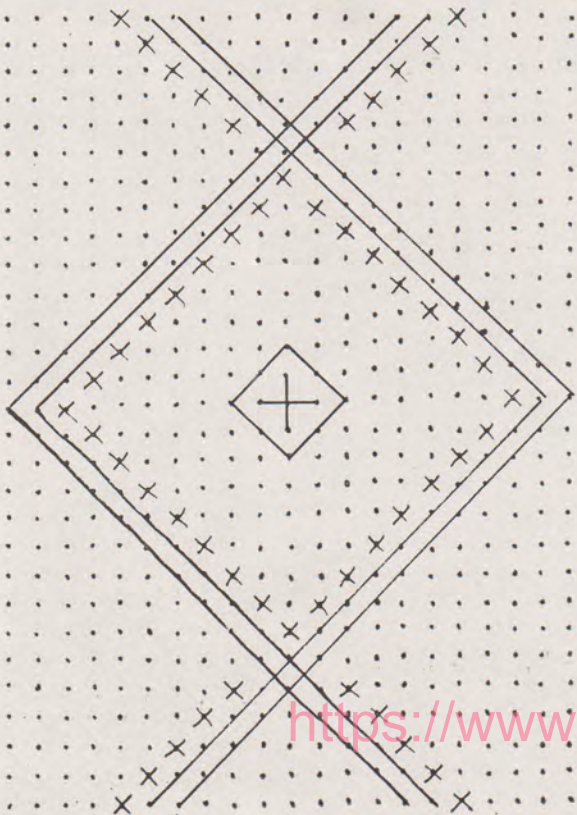
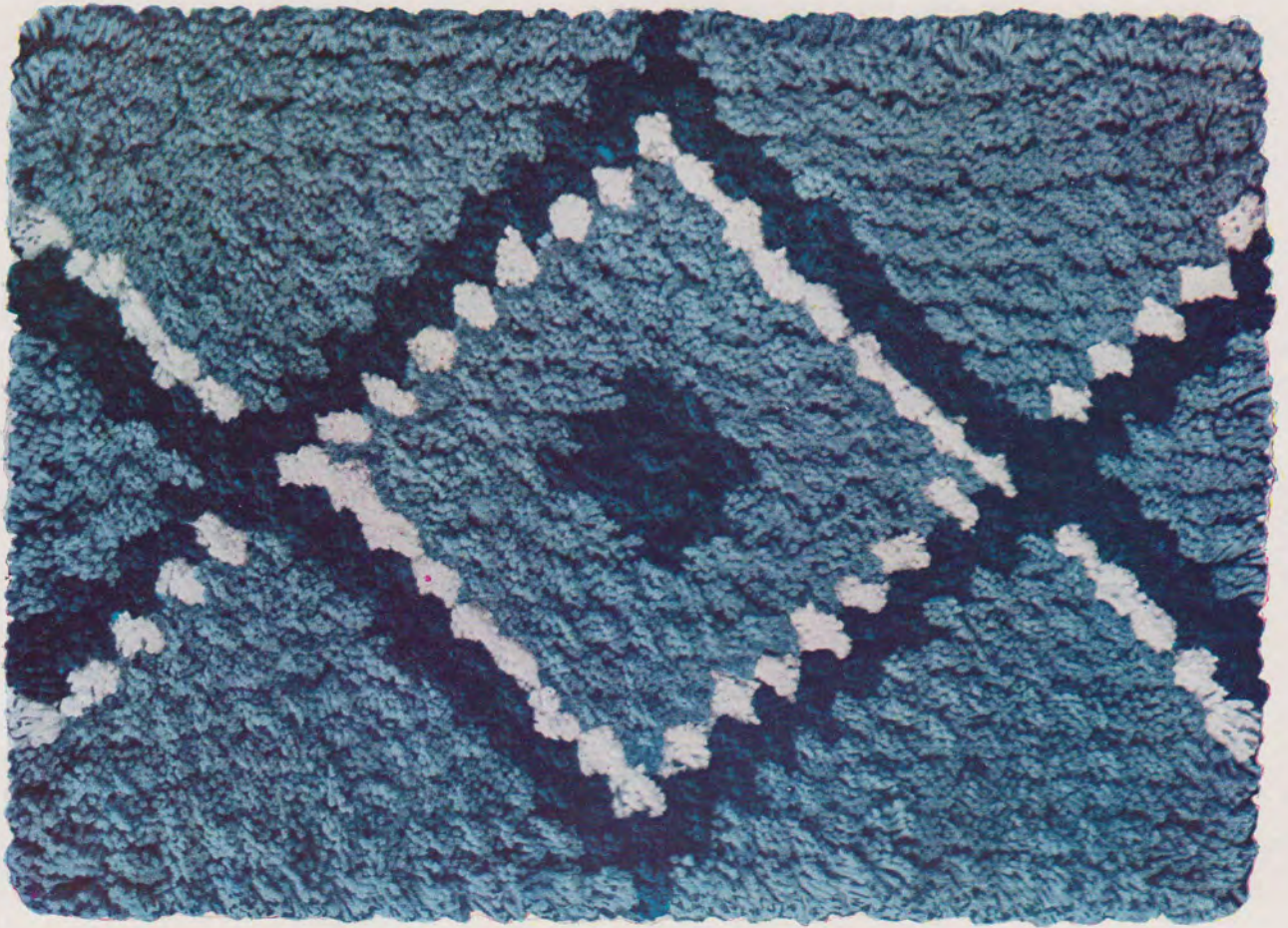
Fig. E

MATERIALS — Lily Fast Color Rug Yarn, Art. 241: 5 skeins Lt. Blue, 9 skeins Dk. Blue. Lily Foundation, Art. 146-E (30" in diameter).

Following diagram, fill in entire background of center Dahlia design with tufts in Lt. Blue. To the large dots in center design, tie tufts in Dk. Blue. Fill in border outside of dahlia petals with tufts in Dk. Blue.



<https://www.knitting-and.com>



"DIAMOND" FLUFF RUG

Fig. M

MATERIALS—Lily Fast Color Rug Yarn, Art. 241: 8 skeins Lt. Blue, 3 skeins Dk. Blue, 1 skein Bleached. Lily Foundation, Art. 142-M, (22" x 30").

Following diagram, fill in black lines with Dk. Blue tassels—Tie a Bleached tassel to dots marked with a small cross. Fill background in with Lt. Blue tassels. Large square outlined in two rows of Dk. Blue, center small square in Dk. Blue solid. Inside edge of large square in Bleached and outside of continued sides of large square also Bleached.

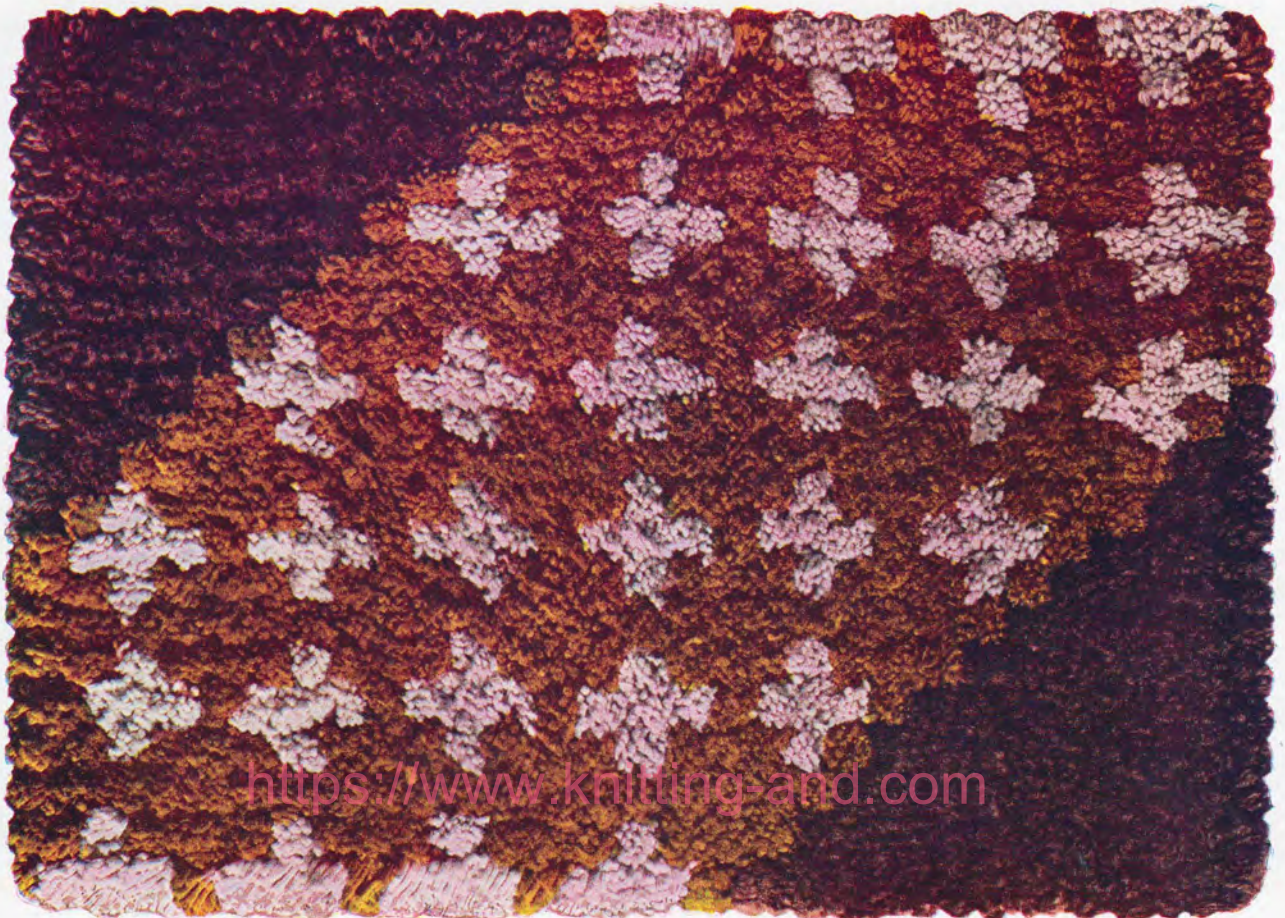
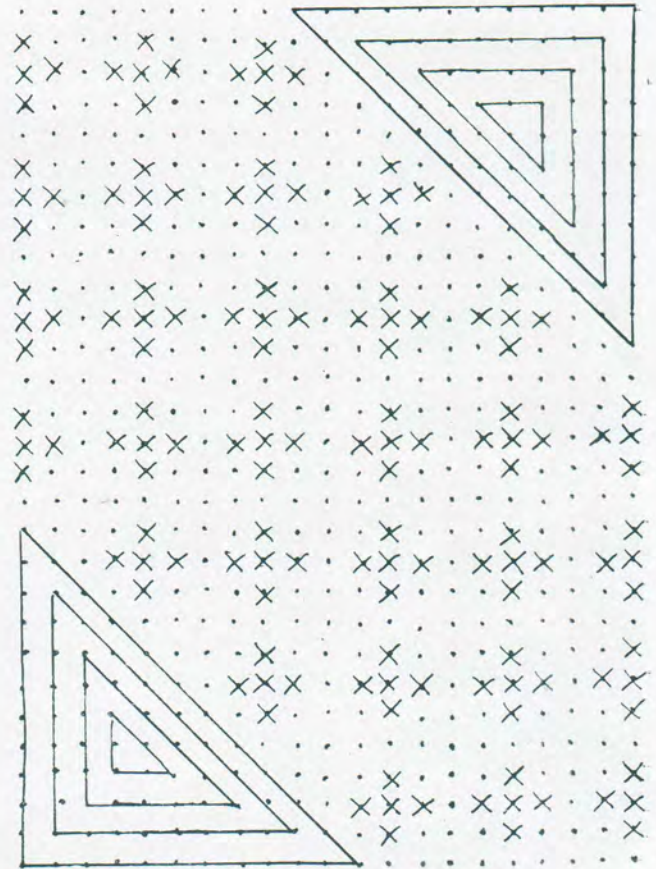
<https://www.knitting-and.com>

"CROSS STITCH" FLUFF RUG

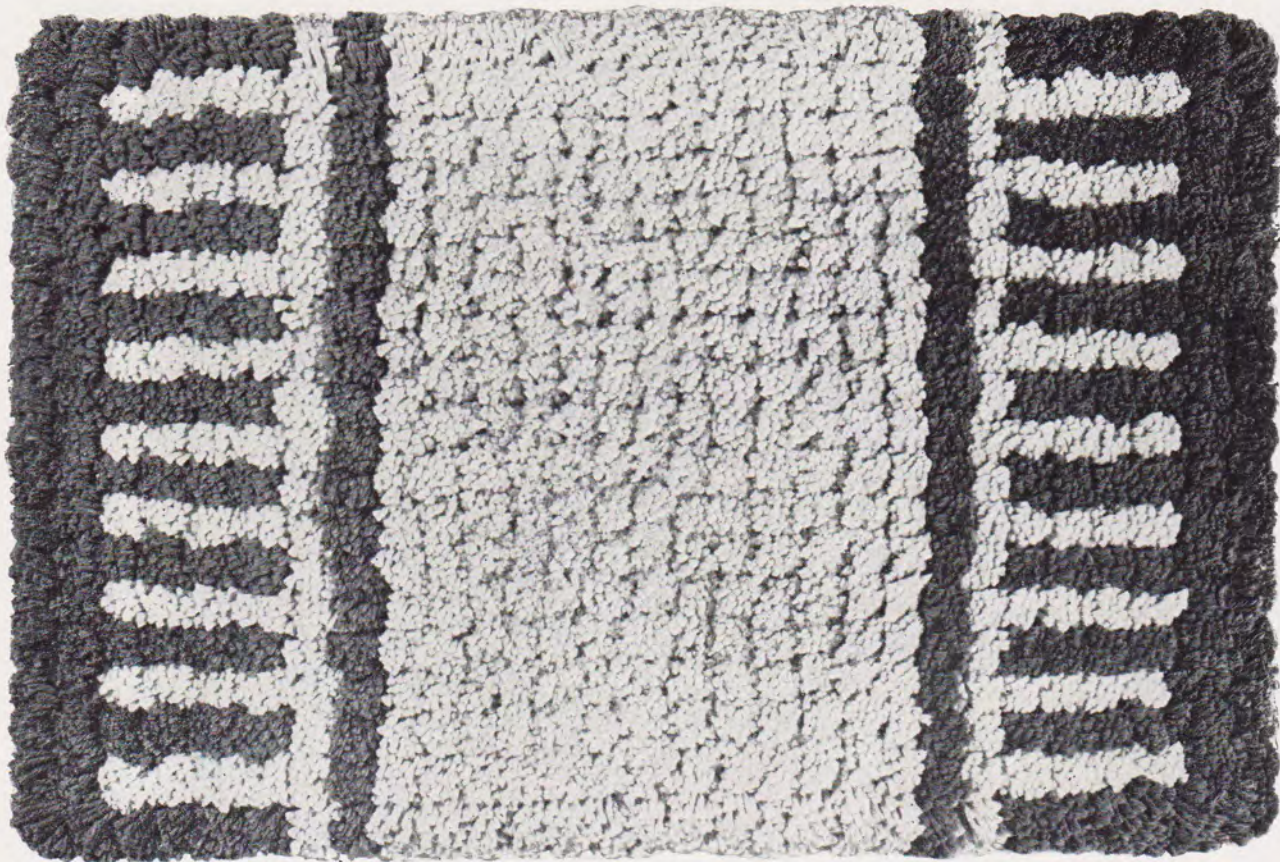
Fig. N

MATERIALS—Lily Fast Color Rug Yarn, Art. 241: 3 skeins Dk. Brown, 6 skeins Rust, 3 skeins Beige. Lily Foundation, Art. 142-N (22" x 30").

Following diagram, fill in black lines with Dk. Brown, tie Beige tassels to dots marked with a small cross. Make background of tassels in Rust. Two opposite corners in Dk. Brown, crosses in center panel Beige, background in center panel Rust.



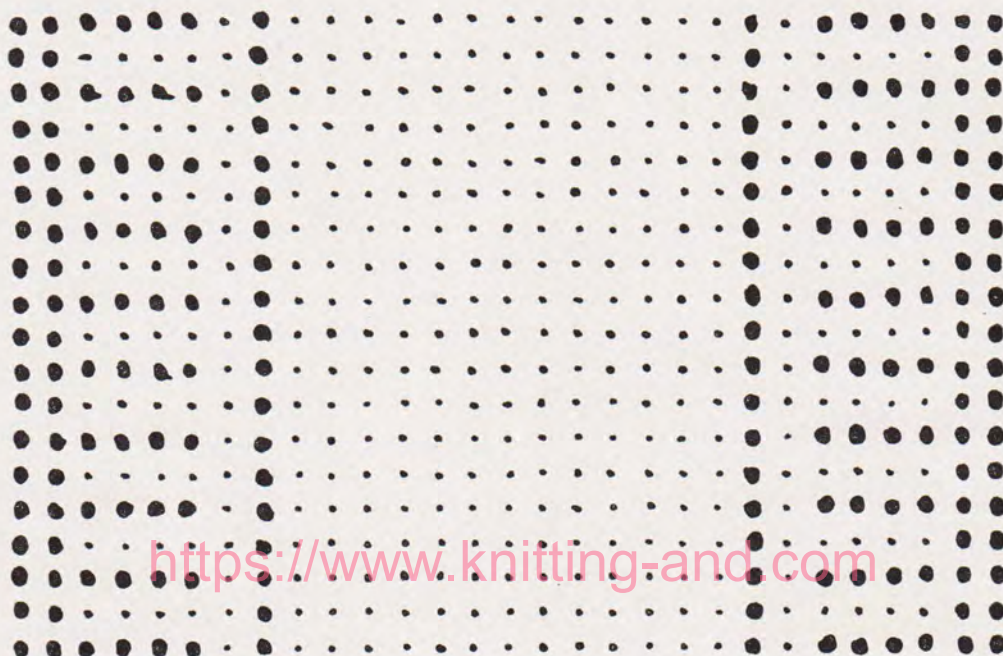
<https://www.knitting-and.com>



"HOMESTEAD" FLUFF RUG, Fig. O

MATERIALS—Lily Fast Color Rug Yarn, Art. 241: 7 skeins Lt. Blue, 4 skeins Dk. Blue. Lily Foundation, Art. 142-O (22" x 30").

Tie tufts in Dk. Blue to the large dots of design. Fill in background with tufts in Lt. Blue.



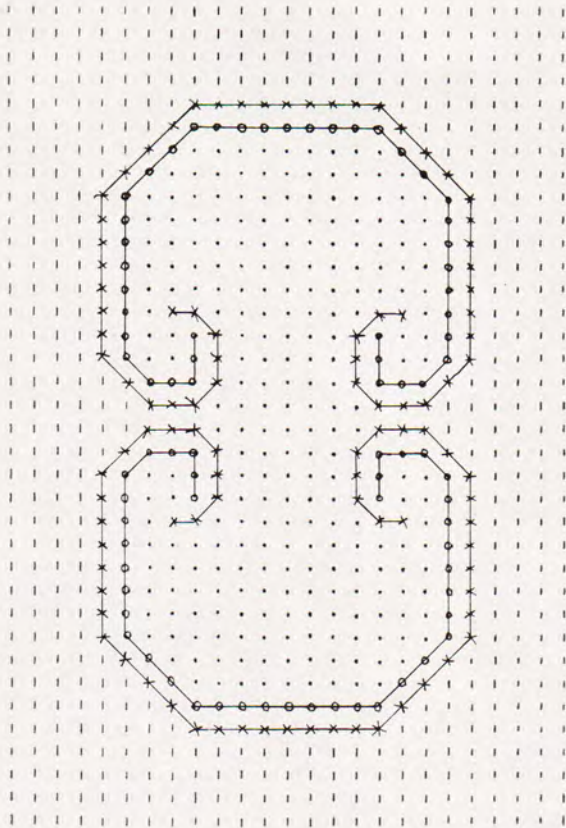
KEY:
 ○—Lt. Blue
 ●—Dk. Blue

<https://www.knitting-and.com>

'WINDING TRAIL'

FLUFF RUG

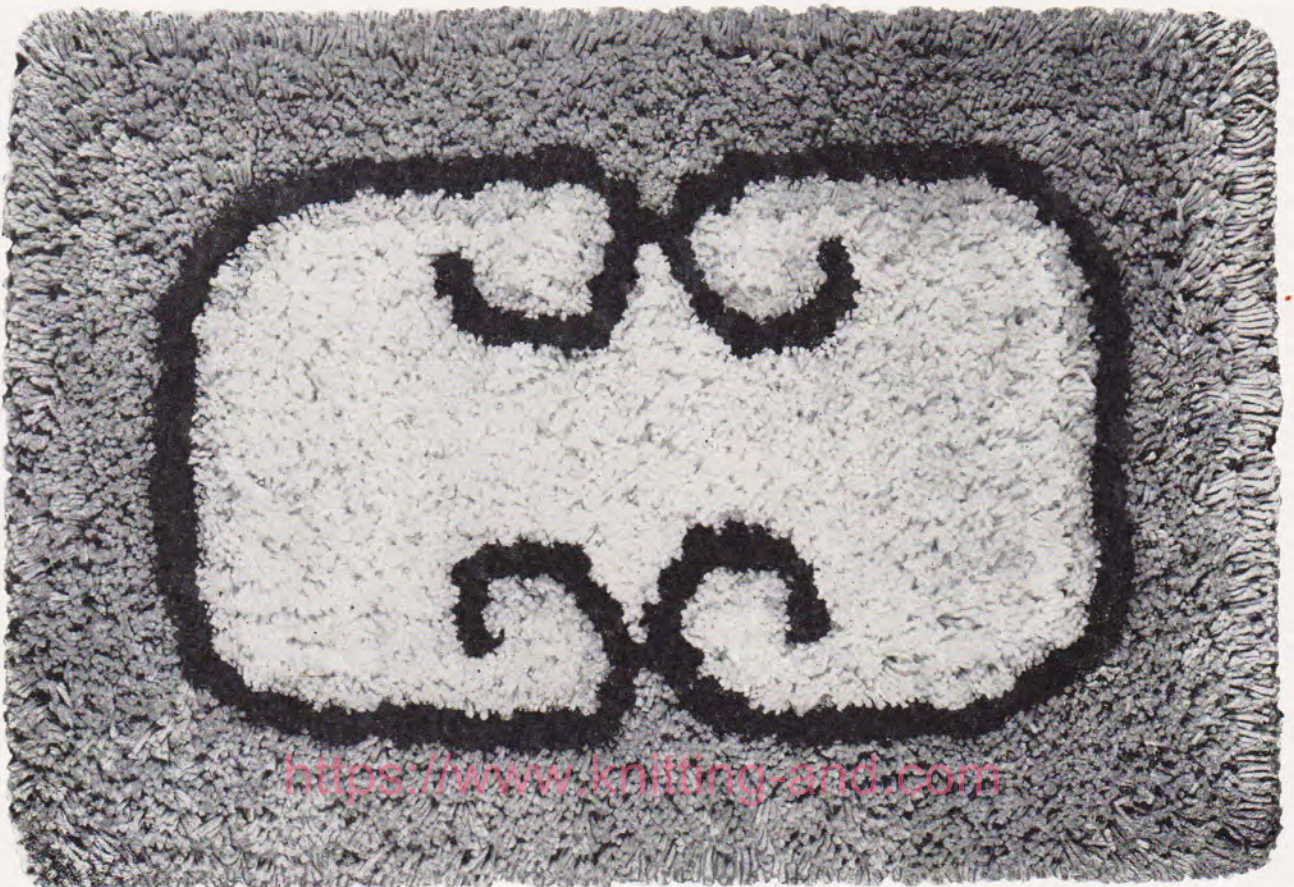
Fig. P



MATERIALS—Lily Fast Color Rug Yarn, Art. 241: 2 skeins Yellow, 2 skeins Dk. Brown, 5 skeins Cream, 8 skeins Beige. Lily Foundation, Art. 145-P, (27" x 40"). Following diagram, tie a brown tassel in each dot of the outer curved line. Tie a Yellow tassel to each dot in the inner curved line. The space inclosed by these lines is filled in with Cream tassels. The entire background is made of Beige tassels. Around curves, and inside corners, it will be necessary to tie an extra tassel here and there to make the lines full and straight. Outer lines in Dk. Brown, inner lines in Yellow, center lines in Cream, background in Beige.

KEY:

- x—Brown
- o—Yellow
- Cream
- Beige



<https://www.knitting-and.com>



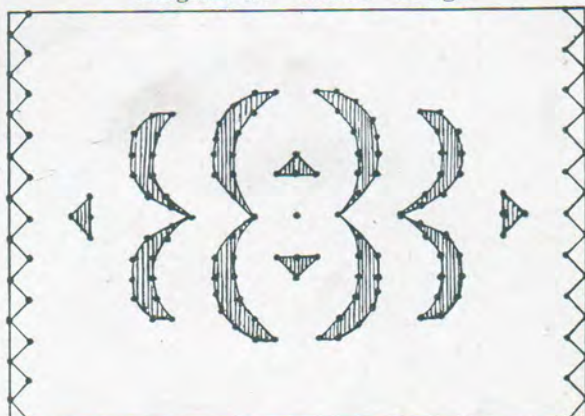
"THISTLE" FLUFF RUG, Fig. D

(As Illustrated on Cover)

MATERIALS—Lily Fast Color Rug Yarn, Art. 241: 3 skeins Peach, 10 skeins Rust. Lily Foundation, Art. 142-D (22" x 30").

Following diagram, fill in center thistle design and the zigzag border at each end with tufts in Peach. Make entire background of tufts in Rust.

Diagram for "Thistle" Design



(Foundation Material will show Dots for each Tuft.)

NOTE:

When purchasing yarn to make your rugs, buy sufficient of each color to complete them, as the next lot of the same color may differ slightly in shade.



Art. 241

A FAST COLOR Rug Yarn of soft, 4-ply cotton construction. 300 ft. skeins. The perfect cotton yarn for making rugs and other household articles. Lily's Rug Yarn can be used also for crocheted rugs or any other type rug for which Candlewick Tufting Cotton is used. A complete range of colors to select from.

R-4 Natural
R-3 Cream
R-90 Beige
R-10 Yellow
R-5 Peach
R-20 Orange
R-129 Rust

R-120 Brown
R-124 Dk. Brown
R-36 Turquoise
R-26 Lt. Blue
R-29 Dk. Blue
R-75 Purple
R-1 Bleached
R-46 Rose Pink

R-49 Dusty Rose
R-70 Lavender
R-55 Lt. Green
R-62 Emerald Green
R-95 Red
R-105 Wine
R-2 Black

R-58 Hunter Green
R-28 Delft Blue
R-41 Salmon Rose
R-87 Gray
R-23 Var. Rose and White

R-13 Var. Blue and White
R-21 Var. Green and White
R-4.2 Dark Peach
R-49.5 Light Dusty Rose

<https://www.knitting-and.com>
LILY MILLS COMPANY, SHELBY, N. C.

MANUFACTURERS OF FINE THREADS AND CROCHET COTTONS