



Thank you

for downloading this pdf file from knitting-and.com!

Your visits have helped keep Knitting-and.com online, providing free crafts and recipes since 1996.

There are hundreds of free patterns and crafts available and more added all the time!

Note: The pink watermark on the following pages will not show if you print this file.



Embroidery Stitches



<http://www.knitting-and.com>

EMBROIDERY STITCHES

In this Third Booklet on Embroidery we have chosen the following five different stitches, and demonstrated some of the many ways they can be used.

Chevron Roumanian Buttonhole Couching Needleweaving

A stitch will alter in appearance, according to the type of silk, cotton or wool with which you are embroidering. It is important to select the best materials available to work with, and to spend a little time in making sure you are not using too thick or too thin an Embroidery thread for your background material.

Study the diagrams and practice the stitches you like best, and then plan your own arrangements of them to suit the articles you wish to decorate.

On the centre pages you will find some suggestions for using the stitches; you will be able to think of many more.

A—Bolster cushion worked in Roumanian and Couching stitch.

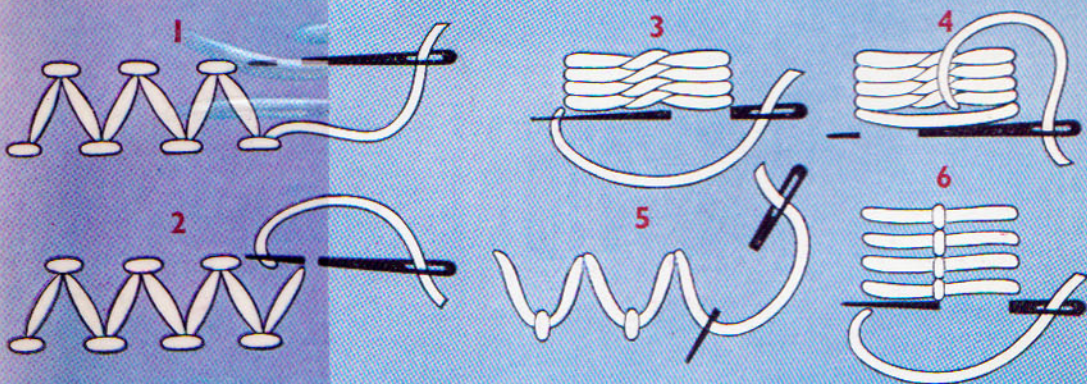
B—Mitten in Buttonhole stitches and darnin

C—Red Cushion with couched wool Embroid

D—Drawstring bag with spaced Bands of Needleweaving

E—Workbag decorated with Buttonhole stitch and darning.

F—Needleweaving on a Knitting Bag.



1 & 2—Chevron Stitch



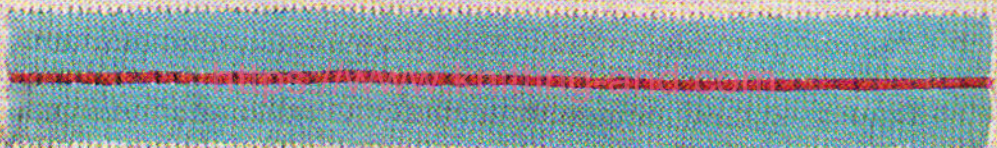
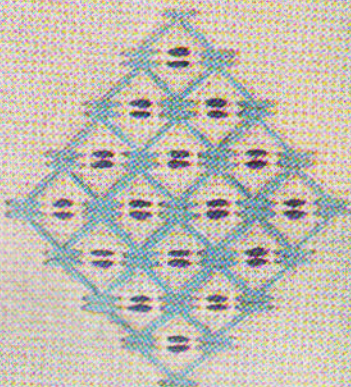
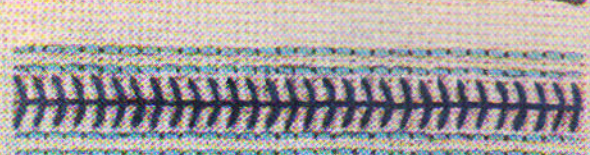
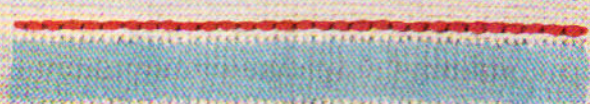
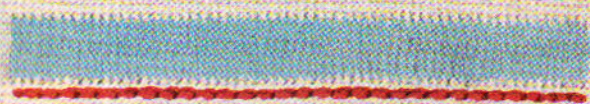
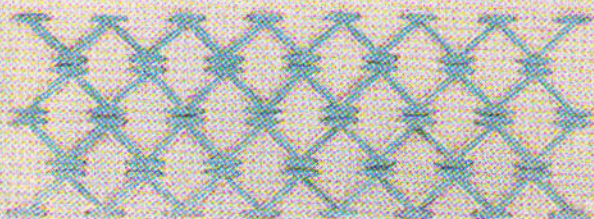
3 & 4—Roumanian Stitch.

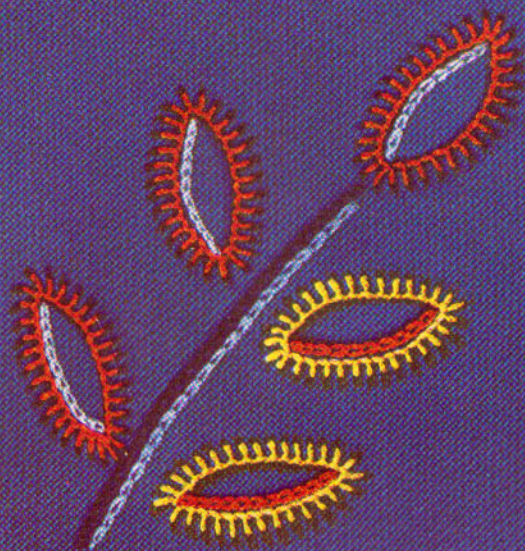
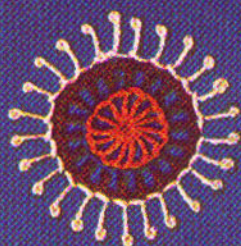
5—Fly Stitch.

6—Open Roumanian Stitch.

CHEVRON AND ROUMANIAN STITCHES

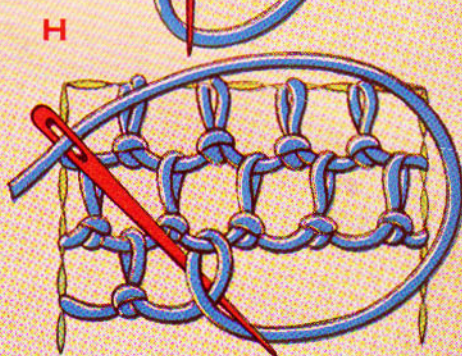
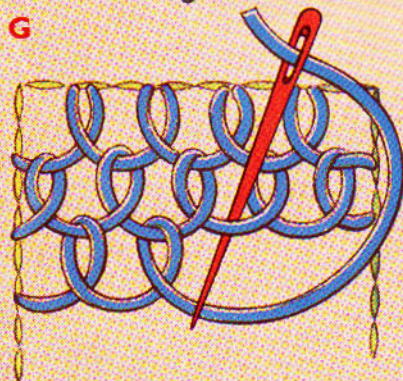
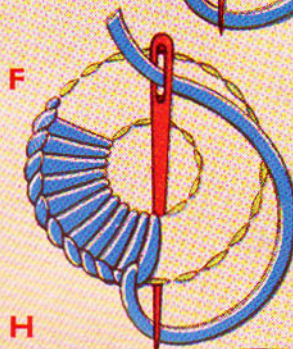
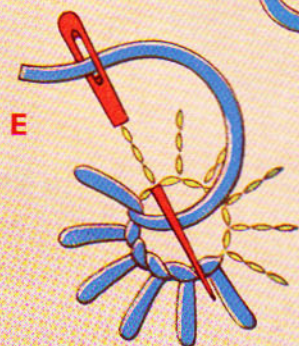
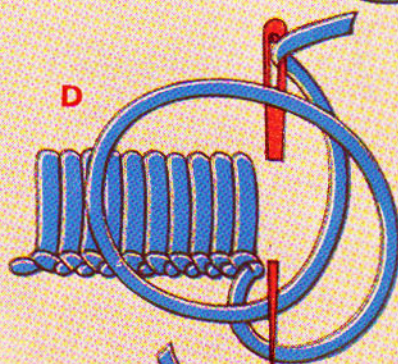
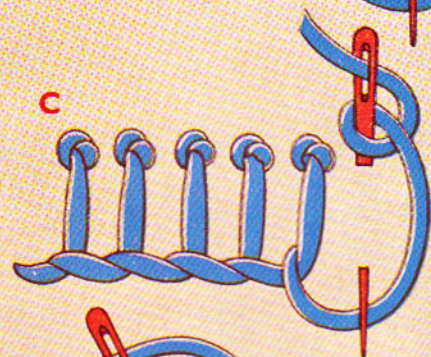
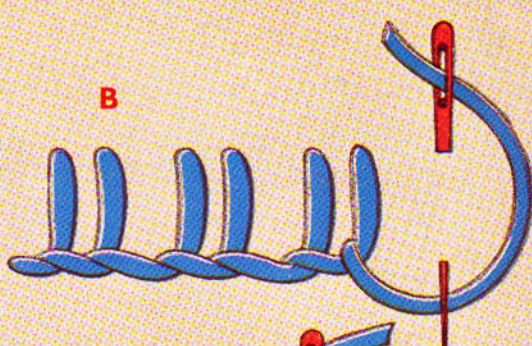
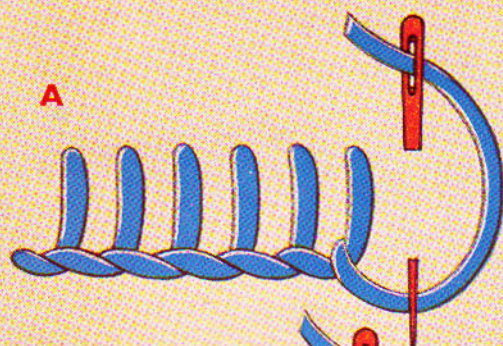
82





<https://www.knitting-and.com>

BLANKET AND BUTTONHOLE STITCHES



A—Simple Blanket Stitch.

C—Knotted Buttonhole.

E—Buttonhole Wheel.

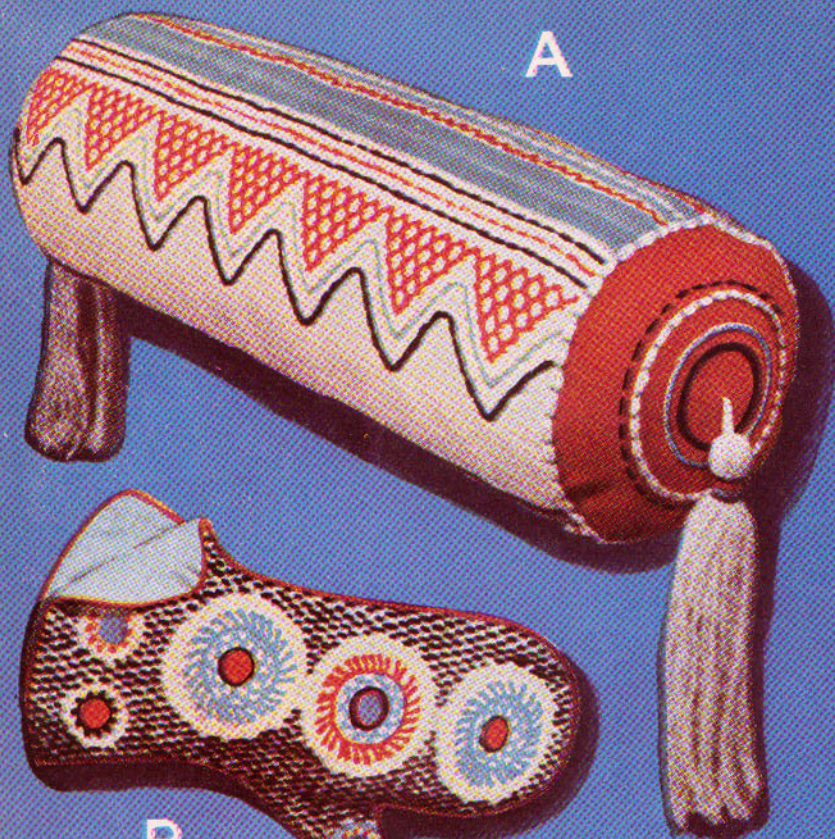
G—Surface Buttonhole Filling.

B—Spaced Buttonhole.

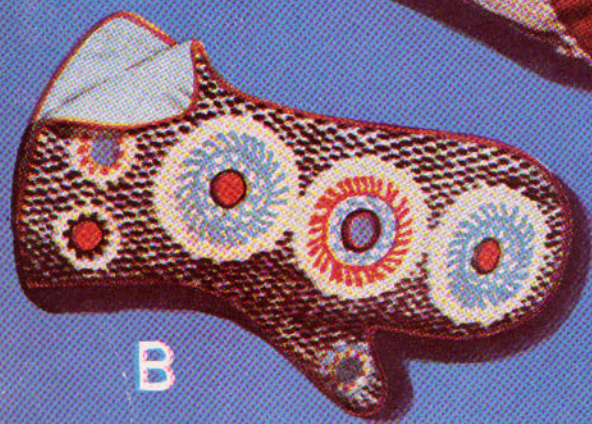
D—Tailors Buttonhole.

F—Alternative Buttonhole Wheel.

H—Knotted Buttonhole Filling.



A



B



D



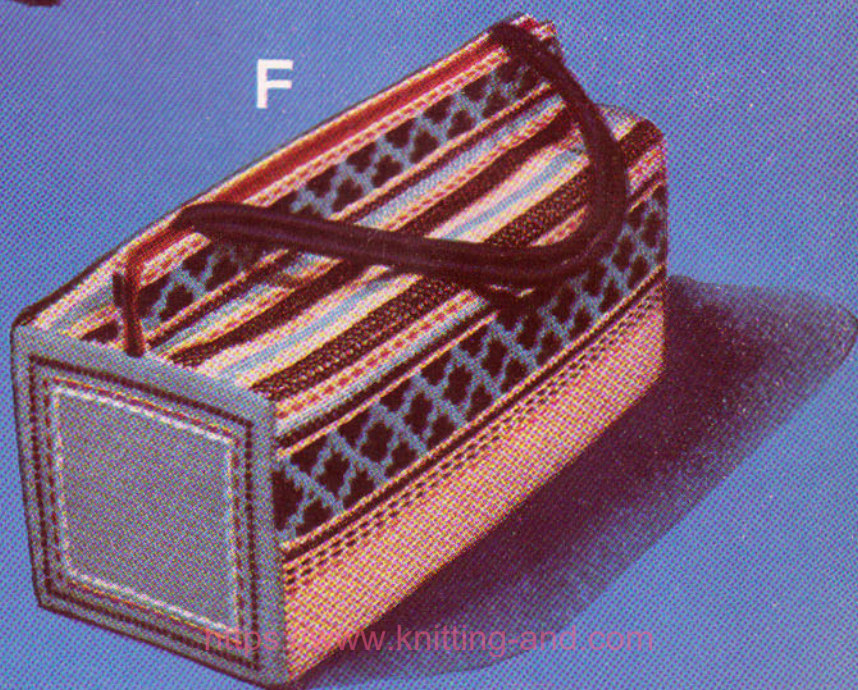
C

<https://www.knitting-and.com>

E

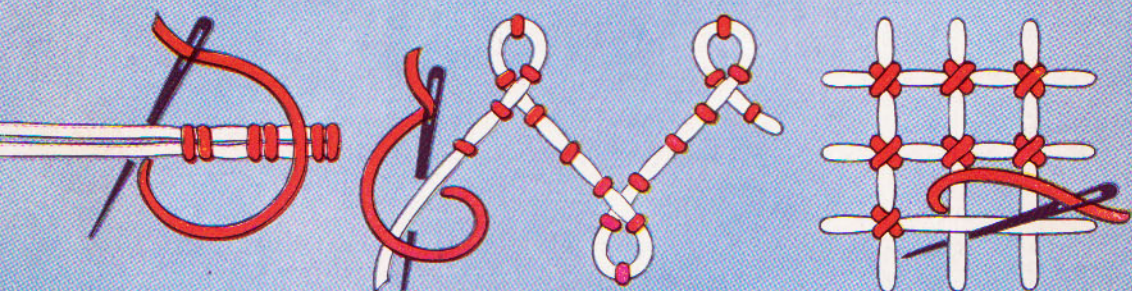


F



<http://www.knitting-and.com>

COUCHING

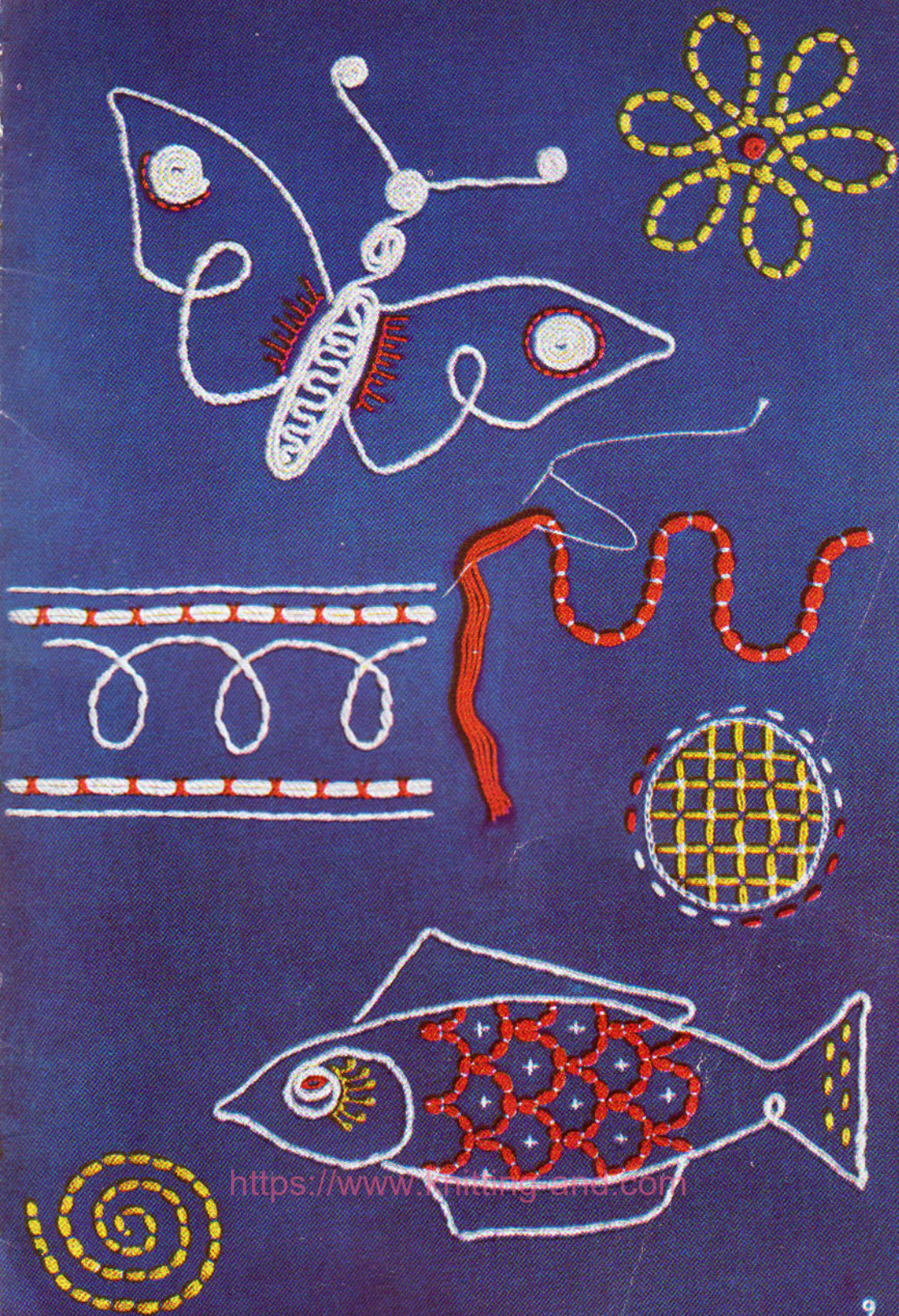


<https://www.knitting-and.com>

Couching a double thread with a contrasting colour.

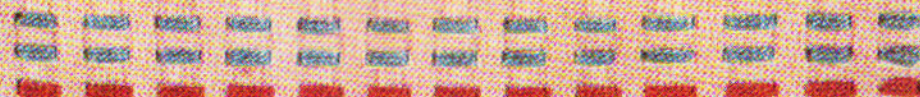
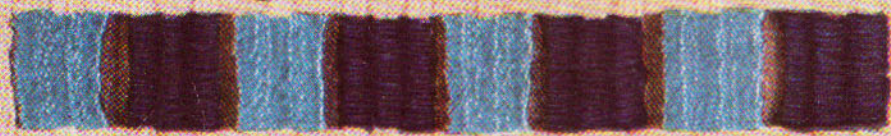
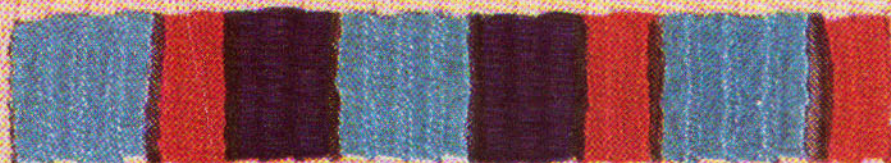
Couching a thicker thread with a contrasting colour.

A couched filling.

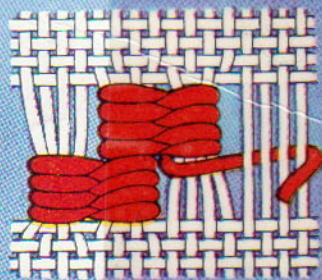
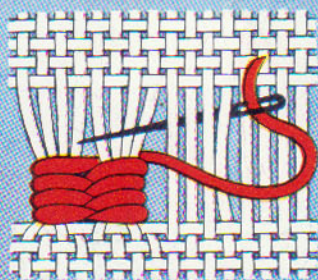
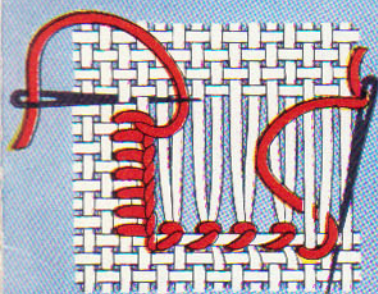
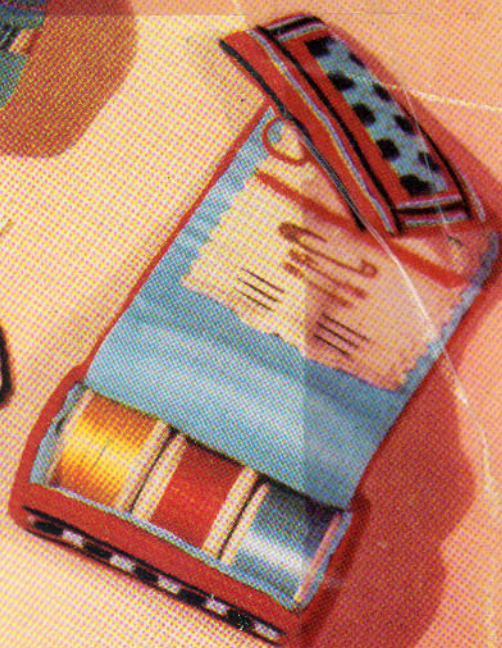


<https://www.knitting-und.com>

NEEDLEWEAVING



These needlecases and pincushion will keep your pins and needles safely.



STAGE 1

Preparing the work.
Hemstitching the drawn
threads.

STAGE 2

Starting the Needle-
weaving.

STAGE 3

Slipping the needle
down to start the next
block of weaving.



Embroidery Stitches



<https://www.knitting-and.com>